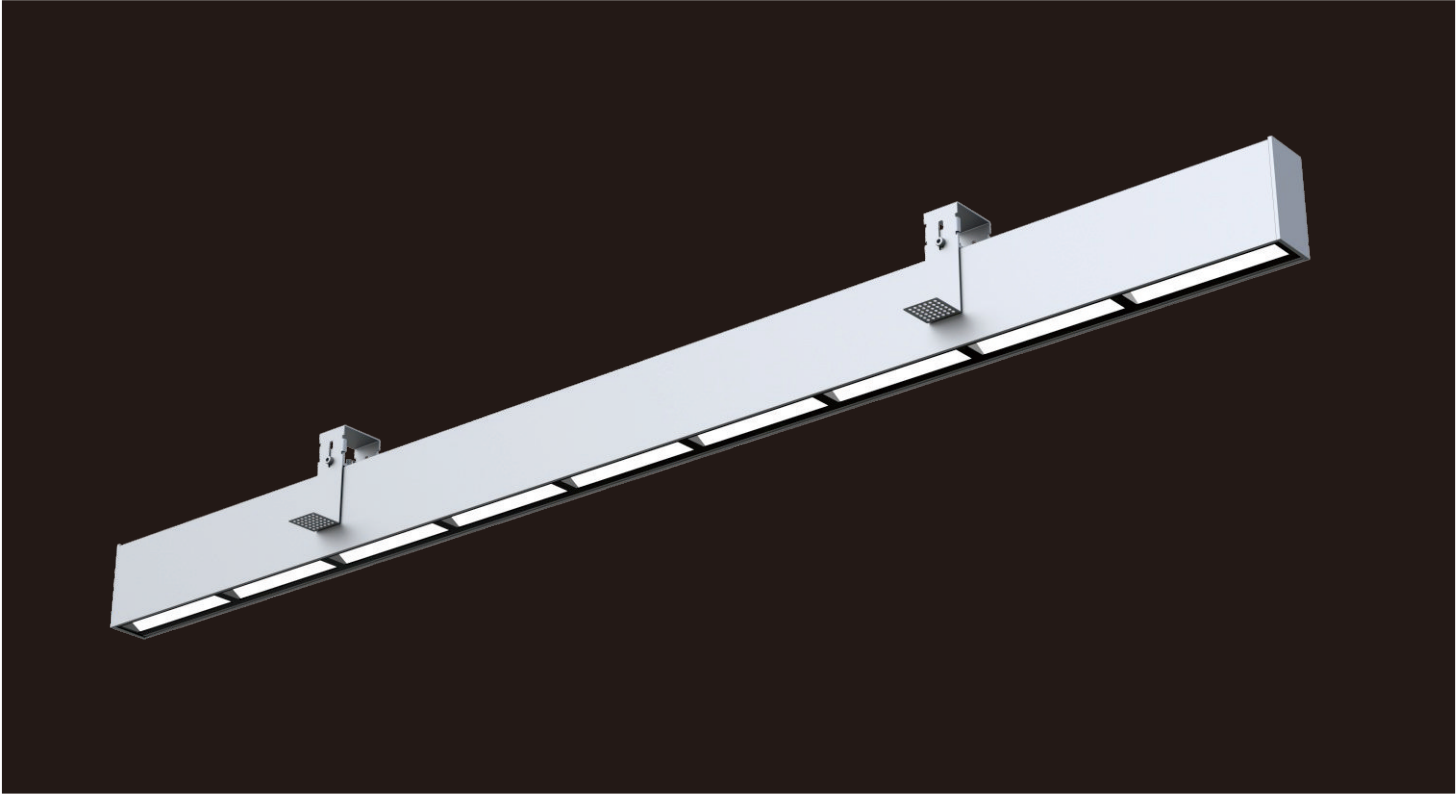


WASE-R

Recessed luminaires



WASE-R is designed with polarizing optical design by using a unique module. Compared with other similar products, it can achieve higher uniformity lighting effect for 3 meter's wall based on a 60cm distance from the wall. No shadow on the whole wall surface. Adopting push-in & push-out structure, equipped with front-mounted and rear-mounted two types of recessed accessories, pre-install the light frame and then install the LED module separately after renovation. Very easy, convenient and efficient for installation and maintenance. With male and female connectors inside the lamp engine and linkable kits inside the package, it can realized linkable connection perfectly. 30W in total, typical value of light efficiency is 100lm/w. It can realize 1-10V or DALI synchronous dimming ,and even support wireless control systems such as CASAMBI, HCL .

Features

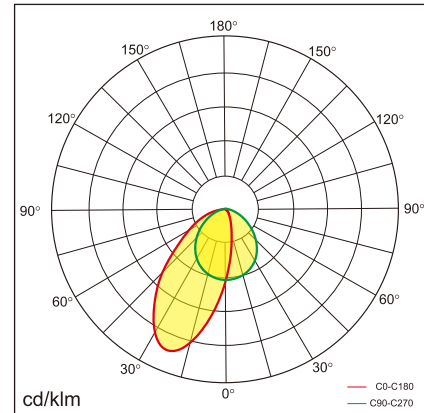
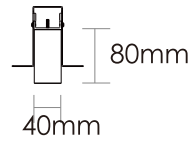
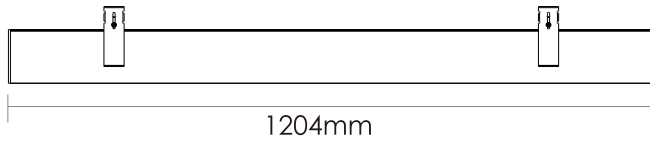
- PUSH-IN-PUSH-OUT solutions, offering an impressive simple and nice installation experience
- Linkable and easy for maintenance
- Wash 3 meter's wall with impressive uniformity light, Offering great compensation light for office spaces
- Support DALI and 1-10V dimming
- Polarized light design, extremely low glare
- 5 years warranty

Application Areas

For open-plan office, training room, stairs, corridors, etc.



Technical data



Item No.	BWAX-1203030-NN	BWAX-1203030-VN	BWAX-1203030-DN
Input Power	30W		
Input Voltage	AC200~240V		
Power Factor	≥0.9		
Luminous Flux	2800lm		
UGR	<19		
Color Rendering Index	>80		
Life Time	L80(B10)50,000H		
Beam Angle	/		
CCT	3000/4000/6000K		
Colour consistency SDCM	< 3		
Dimming	NO	1-10V dimming	DALI dimming
Sensor	NO		
Housing Color	Silver/White		
Fixture Materia	6063AL		
Protection Level	IP20		
Storage Temperature	-40°C~+80°C		
Working Temperature	-20°C~+45°C		
Net Weight	3.4kg		
Package size	1245*330*250mm		
20GP	1864pcs		
40GP	4128pcs		

Shenzhen Nexol Lighting Technology Co.,Ltd.

E-mail: info@nexol-lighting.com

www.nexol-lighting.com

Factory: Floor 6-9, Building 3, Tonghu Intelligent Industrial Park, Zhongkai High-Tech District, HuiZhou 516035

Office: Room 306&309, Floor 3, Building E, Longhua Digital Industrial Park, Guanlan Road 54-6, Longhua district, Shenzhen, China 518110

All values in specification are typical value from laboratory measurement, for concrete data, please refer to shipment testing report.

Information provided is subject to change without notice. Please verify all details with NEXOL Lighting.

Copyright Shenzhen Nexol Lighting Co., Ltd.. All rights reserved.

