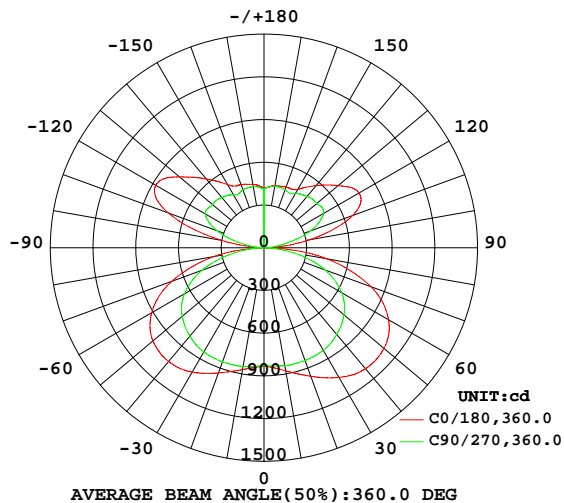


LUMINAIRE PHOTOMETRIC TEST REPORT

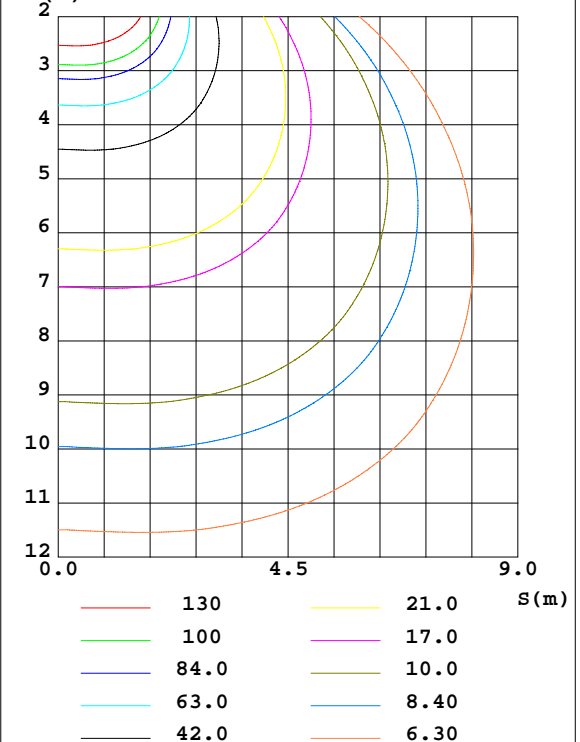
Test:U:229.78V I:0.2502A P:56.081W PF:0.9755 Freq:49.99Hz Lamp Flux:6830.89x1 lm		
NAME: 10000016	TYPE:	WEIGHT:
SPEC.:	DIM.: 610*310*20	SERIAL No.:
MFR.: A2882172-01	SUR.:0.556*0.257	Shielding Angle:

DATA OF LAMP		PHOTOMETRIC DATA Eff: 121.80 lm/W			
MODEL		I _{max} (cd)	1115	S/MH(C0/180)	1.93
NOMINAL POWER(W)	55	LOR(%)	100.0	S/MH(C90/270)	1.51
RATED VOLTAGE(V)	230.0	TOTAL FLUX(lm)	6830.9	η UP,DN(C0-180)	19.7,30.3
NOMINAL FLUX(lm)	6830.89	CIE CLASS	SEMI-D.	η UP,DN(C180-360)	19.7,30.3
LAMPS INSIDE	1	η up(%)	39.4	CIBSE SHR NOM	1.75
TEST VOLTAGE(V)	230.0	η down(%)	60.6	CIBSE SHR MAX	1.75

LUMINOUS INTENSITY DISTRIBUTION DIAGRAM



C0 PLANE ISOLUX DIAGRAM (UNIT:lx)



C Range: 0 - 360DEG
C Interval: 5.0DEG
Test Speed: MEDIUM
Temperature:25.3DEG
Operators:
Test Date:2022-08-18

γ Range: 0 - 180DEG
γ Interval: 0.5DEG
Test System:EVERFINE GO-2000_V1 SYSTEM V2.0.406.10
Humidity:65.0%
Test Distance:11.700m [K=0.8547]
Remarks:

ZONAL FLUX DIAGRAM

ZONAL FLUX DIAGRAM:

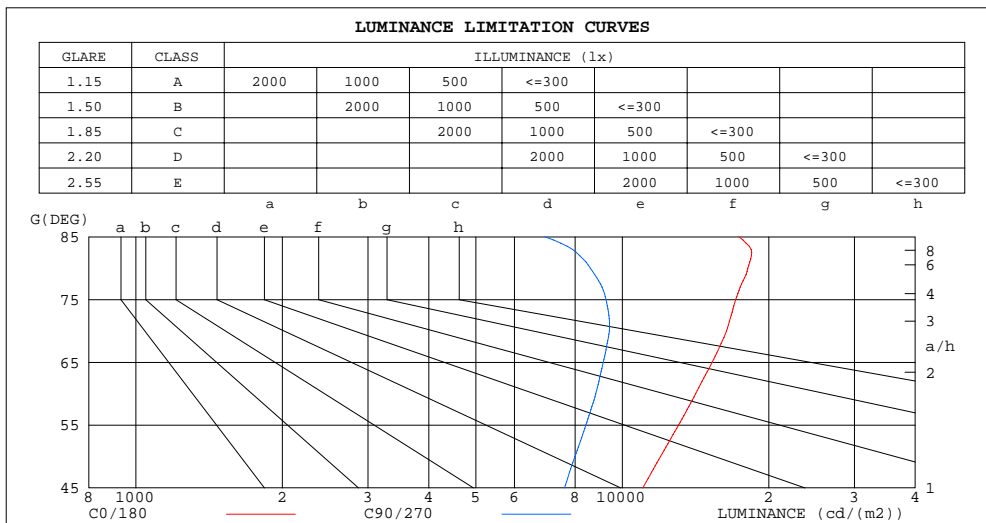
γ	C0	C45	C90	C135	C180	C225	C270	C315	γ	Φ zone	Φ total	Φ lum, lamp
10	878.0	858.5	840.8	848.9	868.9	856.4	846.4	858.4	0- 10	80.69	80.69	1.18,1.18
20	960.5	900.2	843.0	874.5	935.7	888.5	852.5	897.7	10- 20	248.8	329.5	4.82,4.82
30	1052	939.5	832.2	896.5	1009	919.0	845.1	932.5	20- 30	423.4	752.9	11,11
40	1109	968.8	793.6	908.1	1043	937.4	809.3	955.2	30- 40	591.2	1344	19.7,19.7
50	1100	934.8	733.4	855.8	1018	886.6	749.9	913.7	40- 50	719.5	2064	30.2,30.2
60	1010	801.8	629.7	723.8	910.2	749.1	644.2	782.9	50- 60	760.3	2824	41.3,41.3
70	799.7	616.7	459.3	543.5	688.7	561.7	464.1	603.8	60- 70	683.6	3508	51.3,51.3
80	449.3	331.2	213.2	270.9	358.1	278.5	215.5	327.1	70- 80	483.4	3991	58.4,58.4
90	3.883	3.497	3.033	3.419	5.232	4.613	3.883	4.278	80- 90	148.7	4140	60.6,60.6
100	322.4	183.9	127.4	176.9	299.3	182.8	138.8	197.9	90-100	92.63	4232	62,62
110	661.3	421.4	346.6	433.6	715.0	433.7	351.3	428.5	100-110	369.3	4601	67.4,67.4
120	770.7	563.7	482.2	605.7	878.1	587.3	476.5	555.7	110-120	555.2	5157	75.5,75.5
130	679.6	563.6	483.8	611.5	774.7	588.9	472.4	556.0	120-130	551.3	5708	83.6,83.6
140	569.9	494.4	471.7	535.6	631.0	516.4	461.0	485.6	130-140	433.7	6142	89.9,89.9
150	474.1	463.4	439.6	486.2	512.8	479.0	429.8	460.4	140-150	310.1	6452	94.4,94.4
160	453.9	427.7	435.2	442.1	472.3	436.4	433.4	424.7	150-160	212.1	6664	97.6,97.6
170	441.9	438.1	438.8	445.2	452.0	442.9	436.6	438.3	160-170	125.6	6789	99.4,99.4
180	419.1	419.1	419.1	419.1	419.1	419.1	419.1	419.1	170-180	41.54	6831	100,100
DEG	LUMINOUS INTENSITY:cd									UNIT:lm		

C Range: 0 - 360DEG
 C Interval: 5.0DEG
 Test Speed: MEDIUM
 Temperature:25.3DEG
 Operators:
 Test Date:2022-08-18

γ Range: 0 - 180DEG
 γ Interval: 0.5DEG
 γ Test System:EVERFINE GO-2000_V1 SYSTEM V2.0.406.10
 Humidity:65.0%
 Test Distance:11.700m [K=0.8547]
 Remarks:

LUMINANCE LIMITATION CURVES

Test:U:229.78V I:0.2502A P:56.081W PF:0.9755 Freq:49.99Hz Lamp Flux:6830.89x1 lm		
NAME: 10000016	TYPE:	WEIGHT:
SPEC.:	DIM.: 610*310*20	SERIAL No.:
MFR.: A2882172-01	SUR.:0.556*0.257	Shielding Angle:



LUMINANCE cd/(m2)		
G(DEG)	C0/180	C90/270
85	17357	6931
80	18120	8597
75	17107	9255
70	16374	9404
65	15295	9137
60	14147	8820
55	13050	8417
50	11982	7990
45	11020	7607

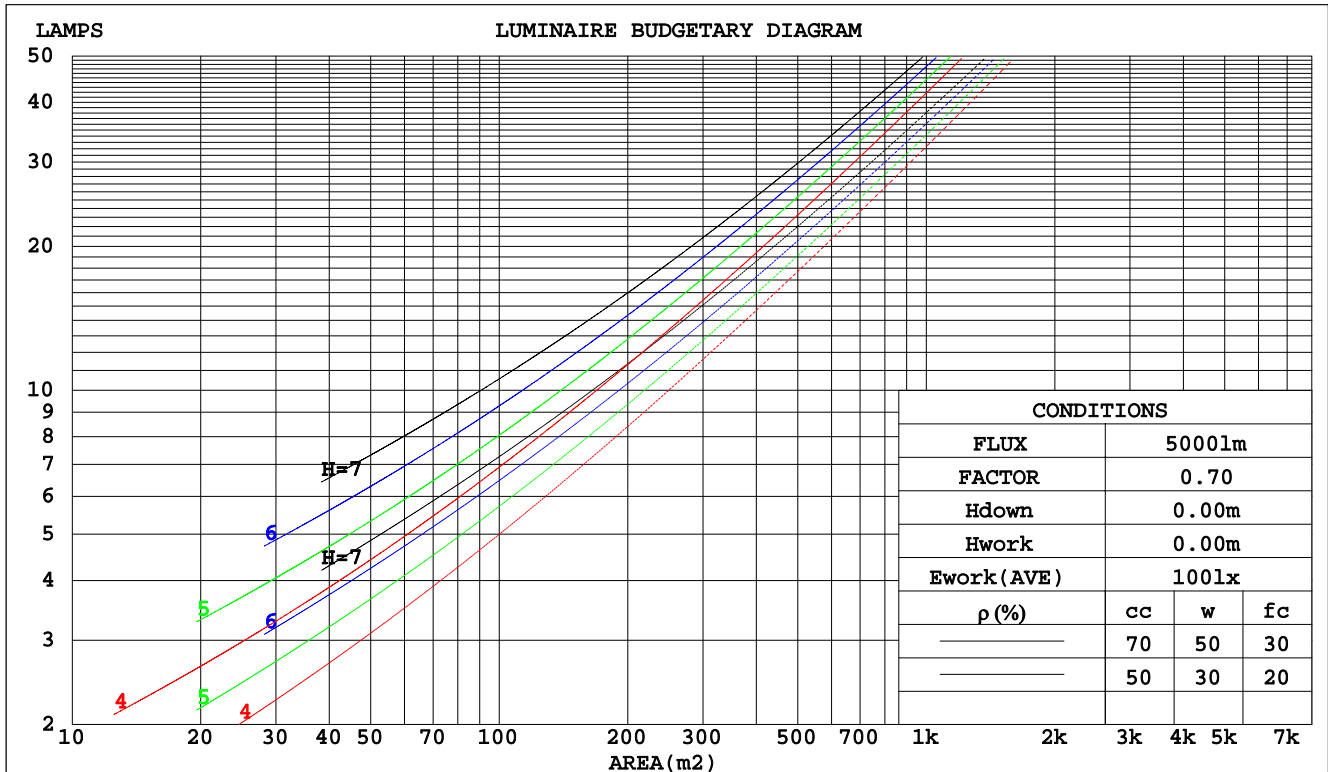
C Range: 0 - 360DEG
C Interval: 5.0DEG
Test Speed: MEDIUM
Temperature:25.3DEG
Operators:
Test Date:2022-08-18

γ Range: 0 - 180DEG
 γ Interval: 0.5DEG
Test System:EVERFINE GO-2000_V1 SYSTEM V2.0.406.10
Humidity:65.0%
Test Distance:11.700m [K=0.8547]
Remarks:

CU AND LUMINAIRE BUDGETARY ESTIMATE DIAGRAM

Test:U:229.78V I:0.2502A P:56.081W PF:0.9755 Freq:49.99Hz Lamp Flux:6830.89x1 lm		
NAME: 10000016	TYPE:	WEIGHT:
SPEC.:	DIM.: 610*310*20	SERIAL No.:
MFR.: A2882172-01	SUR.:0.556*0.257	Shielding Angle:

pcc	80%			70%			50%			30%			10%			0
pw	50%	30%	10%	50%	30%	10%	50%	30%	10%	50%	30%	10%	50%	30%	10%	0
pfc	20%			20%			20%			20%			20%			0
RCR	RCR:Room Cavity Ratio						Coefficients of Utilization(CU)									
0.0	1.10	1.10	1.10	1.03	1.03	1.03	.89	.89	.89	.77	.77	.77	.66	.66	.66	.61
1.0	.94	.89	.85	.88	.84	.80	.76	.73	.70	.66	.63	.61	.56	.54	.53	.48
2.0	.80	.73	.67	.75	.69	.63	.65	.60	.56	.56	.52	.49	.48	.45	.42	.38
3.0	.69	.61	.55	.65	.58	.52	.56	.50	.46	.48	.44	.40	.41	.38	.35	.31
4.0	.61	.52	.45	.57	.49	.43	.49	.43	.38	.42	.37	.33	.36	.32	.29	.25
5.0	.54	.45	.38	.50	.42	.36	.44	.37	.32	.37	.32	.28	.32	.28	.24	.21
6.0	.48	.39	.32	.45	.37	.31	.39	.32	.27	.33	.28	.24	.28	.24	.21	.18
7.0	.43	.34	.28	.40	.32	.27	.35	.28	.24	.30	.25	.21	.26	.21	.18	.16
8.0	.39	.30	.24	.36	.29	.23	.32	.25	.21	.27	.22	.18	.23	.19	.16	.14
9.0	.35	.27	.22	.33	.26	.20	.29	.23	.18	.25	.20	.16	.21	.17	.14	.12
10.0	.32	.24	.19	.30	.23	.18	.26	.20	.16	.23	.18	.15	.20	.16	.13	.11



C Range: 0 - 360DEG
 C Interval: 5.0DEG
 Test Speed: MEDIUM
 Temperature:25.3DEG
 Operators:
 Test Date:2022-08-18

γ Range: 0 - 180DEG
 γ Interval: 0.5DEG
 Test System:EVERFINE GO-2000_V1 SYSTEM V2.0.406.10
 Humidity:65.0%
 Test Distance:11.700m [K=0.8547]
 Remarks:

WEC AND CCEC

Test:U:229.78V I:0.2502A P:56.081W PF:0.9755 Freq:49.99Hz Lamp Flux:6830.89x1 lm								
NAME: 10000016			TYPE:			WEIGHT:		
SPEC.:			DIM.: 610*310*20			SERIAL No.:		
MFR.: A2882172-01			SUR.:0.556*0.257			Shielding Angle:		

pcc	80%			70%			50%			30%			10%			0
pw	50%	30%	10%	50%	30%	10%	50%	30%	10%	50%	30%	10%	50%	30%	10%	0
pfc	20%			20%			20%			20%			20%			0
RCR	RCR:Room Cavity Ratio						Wall Exitance Coefficients(WEC)									
0.0																
1.0	.325	.185	.059	.306	.174	.055	.270	.155	.049	.237	.137	.044	.207	.120	.039	
2.0	.298	.163	.050	.281	.155	.048	.248	.138	.043	.218	.123	.038	.191	.108	.034	
3.0	.272	.145	.043	.256	.137	.041	.227	.123	.037	.199	.109	.033	.174	.096	.030	
4.0	.249	.129	.038	.234	.123	.036	.207	.110	.033	.182	.098	.029	.159	.086	.026	
5.0	.229	.116	.034	.215	.111	.032	.190	.099	.029	.167	.088	.026	.145	.078	.023	
6.0	.211	.106	.030	.199	.100	.029	.176	.090	.026	.154	.080	.024	.134	.071	.021	
7.0	.195	.097	.027	.184	.092	.026	.163	.082	.024	.143	.073	.021	.124	.065	.019	
8.0	.182	.089	.025	.171	.084	.024	.152	.076	.022	.133	.067	.019	.116	.059	.017	
9.0	.170	.082	.023	.160	.078	.022	.142	.070	.020	.125	.062	.018	.108	.055	.016	
10.0	.159	.076	.021	.150	.073	.020	.133	.065	.018	.117	.058	.017	.102	.051	.015	

pcc	80%			70%			50%			30%			10%			0
pw	50%	30%	10%	50%	30%	10%	50%	30%	10%	50%	30%	10%	50%	30%	10%	0
pfc	20%			20%			20%			20%			20%			0
RCR	RCR:Room Cavity Ratio						Ceiling Cavity Exitance Coefficients(CCEC)									
0.0	.491	.491	.491	.419	.419	.419	.286	.286	.286	.164	.164	.164	.053	.053	.053	
1.0	.484	.459	.436	.414	.394	.375	.283	.271	.259	.163	.157	.151	.052	.050	.049	
2.0	.478	.437	.402	.409	.376	.347	.280	.260	.242	.162	.151	.142	.052	.049	.046	
3.0	.471	.421	.380	.404	.363	.330	.277	.252	.231	.160	.147	.136	.051	.048	.045	
4.0	.464	.409	.366	.399	.353	.318	.274	.246	.224	.159	.144	.132	.051	.047	.044	
5.0	.458	.399	.356	.393	.345	.310	.271	.241	.219	.157	.142	.130	.051	.046	.043	
6.0	.451	.392	.349	.388	.339	.304	.267	.237	.215	.155	.140	.128	.050	.046	.042	
7.0	.445	.386	.344	.382	.334	.300	.264	.234	.212	.154	.138	.126	.050	.045	.042	
8.0	.438	.380	.340	.377	.330	.297	.261	.232	.210	.152	.137	.125	.049	.045	.042	
9.0	.433	.376	.337	.373	.326	.294	.258	.229	.209	.150	.135	.125	.049	.044	.041	
10.0	.427	.372	.335	.368	.323	.292	.255	.227	.208	.149	.134	.124	.048	.044	.041	

C Range: 0 - 360DEG
C Interval: 5.0DEG
Test Speed: MEDIUM
Temperature:25.3DEG
Operators:
Test Date:2022-08-18

γ Range: 0 - 180DEG
γ Interval: 0.5DEG
Test System:EVERFINE GO-2000_V1 SYSTEM V2.0.406.10
Humidity:65.0%
Test Distance:11.700m [K=0.8547]
Remarks:

UGR(Unified Glare Rating) Table

Test:U:229.78V I:0.2502A P:56.081W PF:0.9755 Freq:49.99Hz Lamp Flux:6830.89x1 lm											
NAME: 10000016					TYPE:			WEIGHT:			
SPEC.:					DIM.: 610*310*20			SERIAL No.:			
MFR.: A2882172-01					SUR.:0.556*0.257			Shielding Angle:			
ceiling/cavity	0.7	0.7	0.5	0.5	0.3	0.7	0.7	0.5	0.5	0.3	
walls	0.5	0.3	0.5	0.3	0.3	0.5	0.3	0.5	0.3	0.3	
working plane	0.2	0.2	0.2	0.2	0.2	0.2	0.2	0.2	0.2	0.2	
Room dimensions		Viewed crosswise					Viewed endwise				
x = 2H y = 2H		20.4	21.6	21.2	22.3	23.3	18.2	19.3	18.9	20.0	21.0
3H		22.8	23.8	23.6	24.6	25.6	20.0	21.0	20.8	21.8	22.8
4H		23.9	24.8	24.7	25.6	26.6	20.8	21.8	21.6	22.6	23.6
6H		24.8	25.7	25.6	26.5	27.5	21.4	22.3	22.2	23.1	24.1
8H		25.1	26.0	26.0	26.8	27.9	21.6	22.4	22.4	23.2	24.3
12H		25.4	26.2	26.2	27.0	28.1	21.6	22.5	22.5	23.3	24.4
4H 2H		20.9	21.8	21.7	22.6	23.6	19.2	20.2	20.0	21.0	22.0
3H		23.4	24.2	24.3	25.1	26.1	21.2	22.0	22.0	22.9	23.9
4H		24.7	25.4	25.5	26.3	27.3	22.1	22.8	22.9	23.7	24.8
6H		25.8	26.4	26.6	27.3	28.4	22.8	23.4	23.6	24.3	25.4
8H		26.2	26.8	27.1	27.7	28.8	23.0	23.6	23.9	24.5	25.6
12H		26.5	27.0	27.4	27.9	29.1	23.1	23.6	24.0	24.6	25.7
8H 4H		24.8	25.4	25.7	26.3	27.5	22.7	23.3	23.6	24.2	25.3
6H		26.1	26.6	27.0	27.5	28.7	23.6	24.0	24.5	25.0	26.1
8H		26.7	27.1	27.6	28.0	29.2	23.9	24.3	24.8	25.2	26.4
12H		27.1	27.5	28.0	28.4	29.6	24.1	24.4	25.0	25.4	26.6
12H 4H		24.8	25.4	25.7	26.3	27.4	22.8	23.3	23.7	24.2	25.4
6H		26.1	26.6	27.1	27.5	28.7	23.7	24.2	24.7	25.1	26.3
8H		26.8	27.1	27.7	28.1	29.3	24.1	24.5	25.1	25.4	26.6
Variations with the observer position at spacings:											
S = 1.0H		+ 0.1 / - 0.1					+ 0.1 / - 0.1				
1.5H		+ 0.2 / - 0.2					+ 0.2 / - 0.3				
2.0H		+ 0.2 / - 0.4					+ 0.2 / - 0.5				

CIE Pub.117, 6831 lm Total Lamp Luminous Flux Corrected ($8\log(F/F_0) = 6.7$)

C Range: 0 - 360DEG
C Interval: 5.0DEG
Test Speed: MEDIUM
Temperature:25.3DEG
Operators:
Test Date:2022-08-18

γ Range: 0 - 180DEG
 γ Interval: 0.5DEG
Test System:EVERFINE GO-2000_V1 SYSTEM V2.0.406.10
Humidity:65.0%
Test Distance:11.700m [K=0.8547]
Remarks:

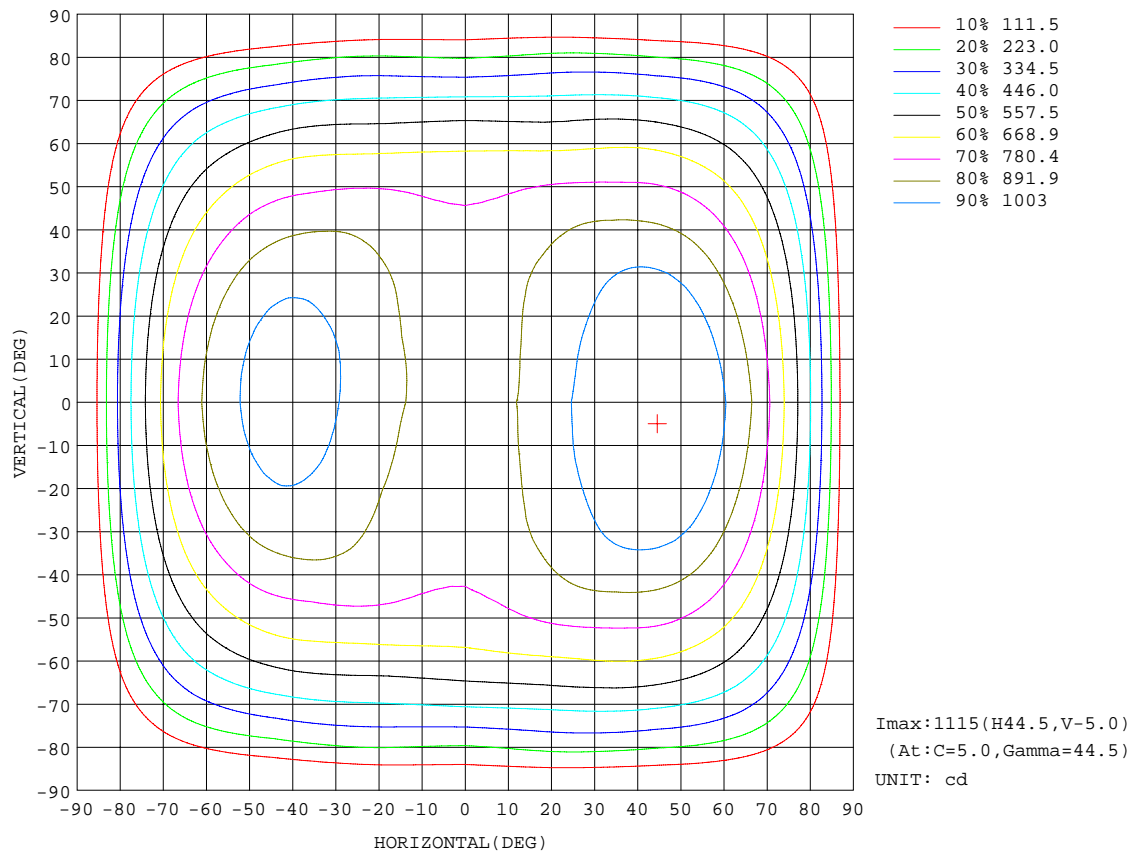
```

γ Range: 0 - 180DEG
γ Interval: 0.5DEG
Test System:EVERFINE GO-2000_V1 SYSTEM V2.0.406.10
Humidity:65.0%
Test Distance:11.700m [K=0.8547]
Remarks:

```

ISOCANDELA DIAGRAM

Test:U:229.78V I:0.2502A P:56.081W PF:0.9755 Freq:49.99Hz Lamp Flux:6830.89x1 lm		
NAME: 10000016	TYPE:	WEIGHT:
SPEC.:	DIM.: 610*310*20	SERIAL No.:
MFR.: A2882172-01	SUR.:0.556*0.257	Shielding Angle:

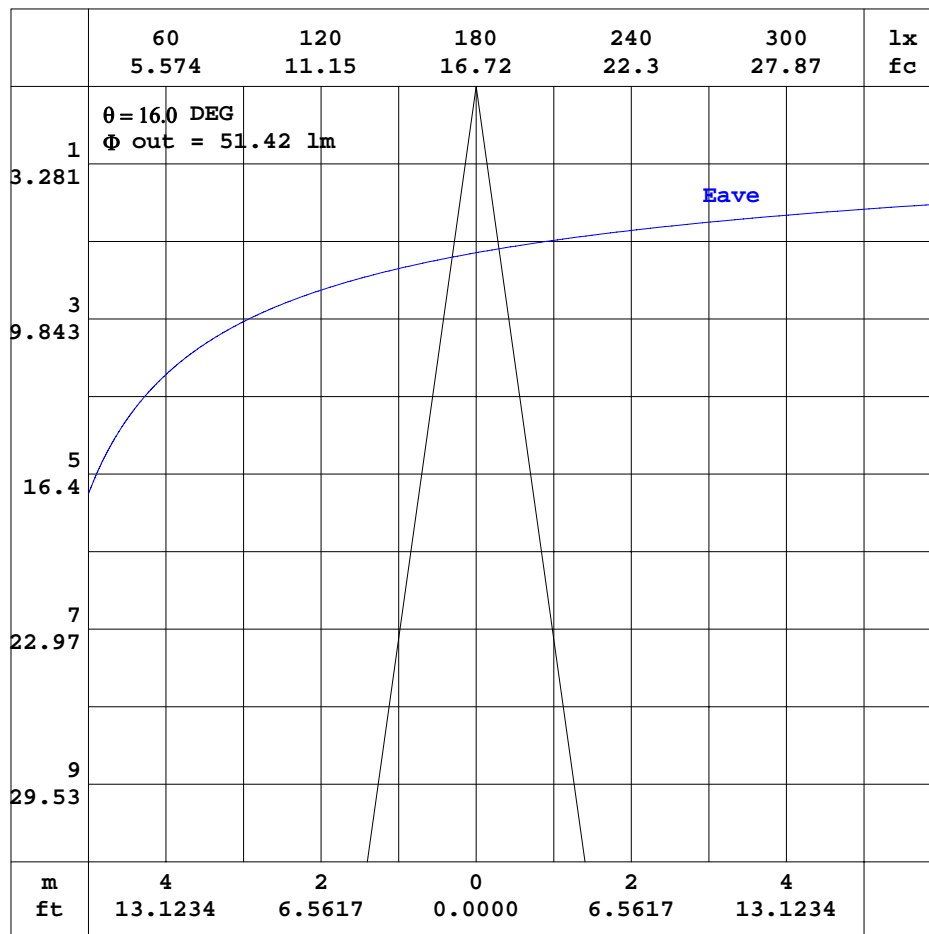


C Range: 0 - 360DEG
C Interval: 5.0DEG
Test Speed: MEDIUM
Temperature:25.3DEG
Operators:
Test Date:2022-08-18

γ Range: 0 - 180DEG
 γ Interval: 0.5DEG
Test System:EVERFINE GO-2000_V1 SYSTEM V2.0.406.10
Humidity:65.0%
Test Distance:11.700m [K=0.8547]
Remarks:

AAI CURVES

Test:U:229.78V I:0.2502A P:56.081W PF:0.9755 Freq:49.99Hz Lamp Flux:6830.89x1 lm		
NAME: 10000016	TYPE:	WEIGHT:
SPEC.:	DIM.: 610*310*20	SERIAL No.:
MFR.: A2882172-01	SUR.:0.556*0.257	Shielding Angle:



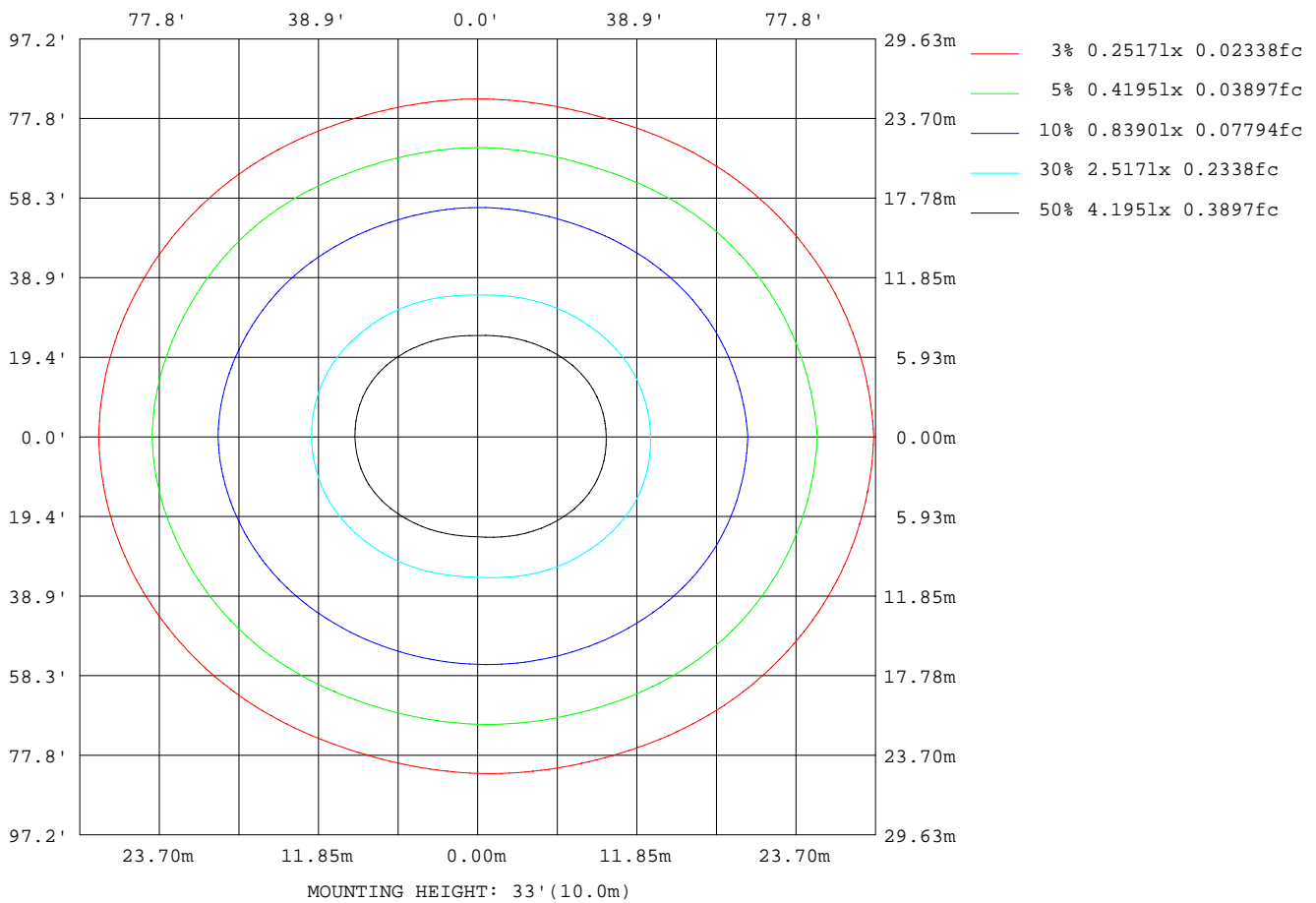
Note: The Curves indicate the illuminated area and the average illumination when the luminaire is at different distance.

C Range: 0 - 360DEG
 C Interval: 5.0DEG
 Test Speed: MEDIUM
 Temperature: 25.3DEG
 Operators:
 Test Date: 2022-08-18

γ Range: 0 - 180DEG
 γ Interval: 0.5DEG
 Test System: EVERFINE GO-2000_V1 SYSTEM V2.0.406.10
 Humidity: 65.0%
 Test Distance: 11.700m [K=0.8547]
 Remarks:

ISOLUX DIAGRAM

Test:U:229.78V I:0.2502A P:56.081W PF:0.9755 Freq:49.99Hz Lamp Flux:6830.89x1 lm		
NAME: 10000016	TYPE:	WEIGHT:
SPEC.:	DIM.: 610*310*20	SERIAL No.:
MFR.: A2882172-01	SUR.:0.556*0.257	Shielding Angle:



C Range: 0 - 360DEG
C Interval: 5.0DEG
Test Speed: MEDIUM
Temperature: 25.3DEG
Operators:
Test Date: 2022-08-18

γ Range: 0 - 180DEG
 γ Interval: 0.5DEG
Test System: EVERFINE GO-2000_V1 SYSTEM V2.0.406.10
Humidity: 65.0%
Test Distance: 11.700m [K=0.8547]
Remarks:

LED Avg.L Report

Test:U:229.78V I:0.2502A P:56.081W PF:0.9755 Freq:49.99Hz Lamp Flux:6830.89x1 lm		
NAME: 10000016	TYPE:	WEIGHT:
SPEC.:	DIM.: 610*310*20	SERIAL No.:
MFR.: A2882172-01	SUR.:0.556*0.257	Shielding Angle:

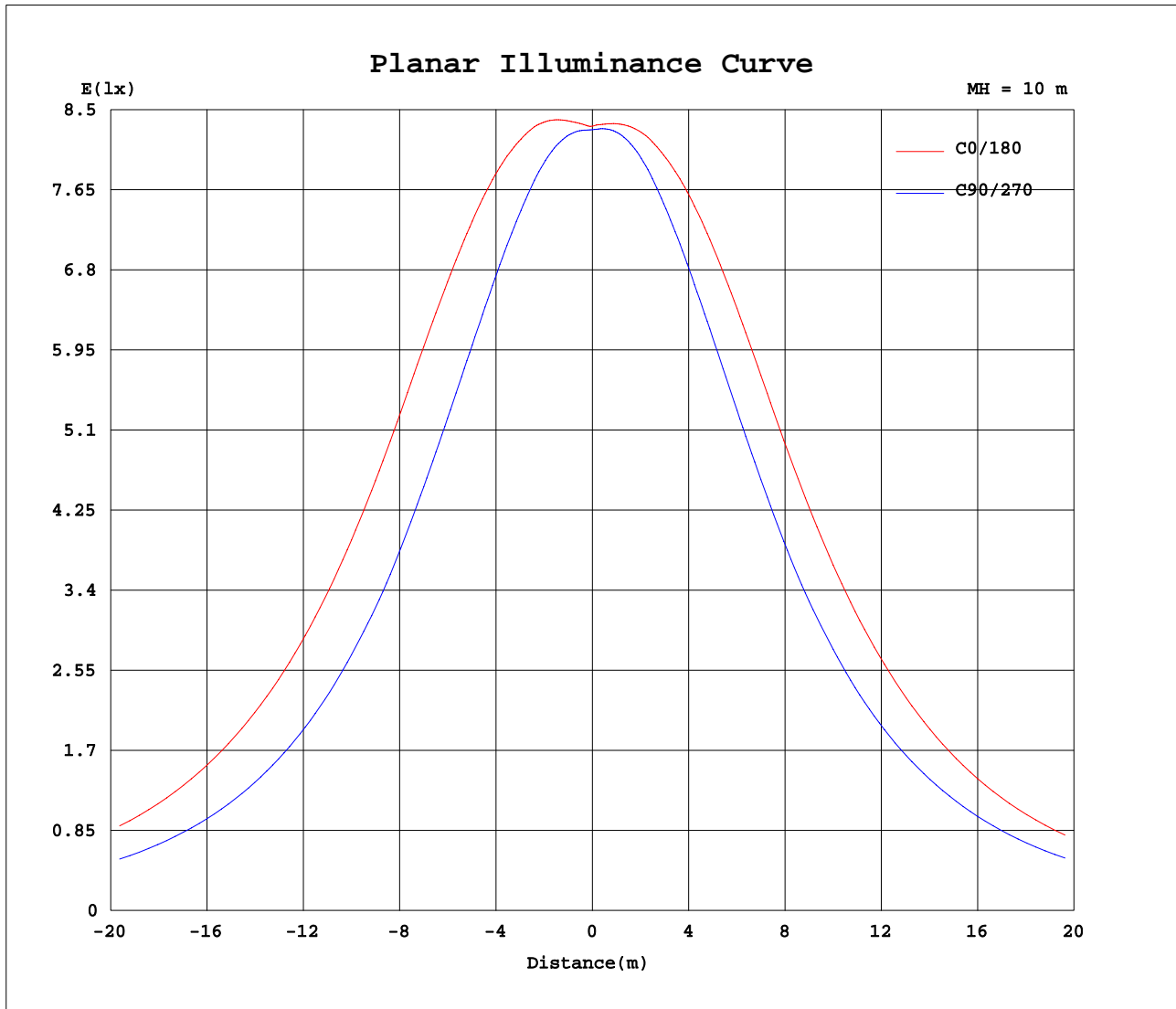
AvgL	cd/m2
L_0~180(65)av	14415
L_0~180(75)av	15707
L_0~180(85)av	13955
L_90~270(65)av	9233
L_90~270(75)av	9272
L_90~270(85)av	6933
L_45(65)av	11350
L_45(75)av	12239
L_45(85)av	9554

Standard: GB/T 29293-2012

C Range: 0 - 360DEG
C Interval: 5.0DEG
Test Speed: MEDIUM
Temperature:25.3DEG
Operators:
Test Date:2022-08-18

γ Range: 0 - 180DEG
γ Interval: 0.5DEG
Test System:EVERFINE GO-2000_V1 SYSTEM V2.0.406.10
Humidity:65.0%
Test Distance:11.700m [K=0.8547]
Remarks:

Planar Illuminance Curve



C Range: 0 - 360DEG
C Interval: 5.0DEG
Test Speed: MEDIUM
Temperature: 25.3DEG
Operators:
Test Date: 2022-08-18

γ Range: 0 - 180DEG
 γ Interval: 0.5DEG
Test System: EVERFINE GO-2000_V1 SYSTEM V2.0.406.10
Humidity: 65.0%
Test Distance: 11.700m [K=0.8547]
Remarks:

LUMINOUS DISTRIBUTION INTENSITY DATA

Test:U:229.78V I:0.2502A P:56.081W PF:0.9755 Freq:49.99Hz Lamp Flux:6830.89x1 lm		
NAME: 10000016	TYPE:	WEIGHT:
SPEC.:	DIM.: 610*310*20	SERIAL No.:
MFR.: A2882172-01	SUR.:0.556*0.257	Shielding Angle:

Table--1

UNIT: cd

C(DEG) γ (DEG)	0	5	10	15	20	25	30	35	40	45	50	55	60	65	70	75	80	85	90
0	833	832	832	832	832	831	831	831	830	830	830	830	830	830	829	829	829	829	829
5	847	847	846	845	844	844	843	842	841	840	839	838	837	836	836	835	835	834	834
10	878	877	876	874	872	870	867	864	861	859	856	853	850	848	846	844	843	842	841
15	917	915	913	910	907	903	897	892	886	880	874	869	863	858	854	850	847	845	843
20	960	959	956	952	946	939	930	920	910	900	891	883	875	867	860	854	849	846	843
25	1007	1006	1002	996	989	978	965	951	936	921	908	896	885	875	865	856	849	843	839
30	1052	1051	1047	1040	1031	1017	999	980	960	940	923	908	894	881	868	856	846	838	832
35	1089	1089	1085	1077	1066	1050	1029	1006	981	957	936	917	899	882	865	850	836	826	819
40	1109	1109	1106	1099	1087	1070	1048	1023	996	969	944	919	895	873	852	832	815	802	794
45	1113	1115	1112	1105	1094	1076	1052	1025	996	966	937	908	881	855	831	809	791	777	768
50	1100	1103	1101	1094	1081	1060	1033	1002	969	935	905	876	848	822	798	776	757	743	733
55	1069	1070	1066	1056	1040	1016	984	949	912	876	846	818	792	768	746	727	710	698	689
60	1010	1005	996	982	963	938	906	872	837	802	772	743	717	694	674	658	646	636	630
65	923	912	898	881	861	838	811	782	752	721	691	662	635	610	591	576	565	557	551
70	800	789	776	761	743	722	697	671	644	617	588	561	535	512	493	480	470	463	459
75	632	630	625	615	602	584	561	536	510	484	462	441	421	403	386	371	358	348	342
80	449	450	448	442	432	417	397	375	353	331	317	303	291	279	265	249	234	222	213
85	216	217	216	212	207	198	185	172	159	146	138	132	126	120	113	105	97.7	91.2	86.3
90	3.88	3.87	3.85	3.83	3.79	3.75	3.69	3.63	3.56	3.50	3.43	3.36	3.29	3.23	3.17	3.12	3.09	3.05	3.03
95	131	129	126	122	116	107	96.4	85.2	74.3	64.6	60.3	57.4	55.5	54.2	52.1	49.1	46.4	44.0	42.2
100	322	320	315	306	294	276	253	229	205	184	174	167	161	158	152	144	137	131	127
105	509	502	490	475	456	431	399	366	335	306	291	280	271	265	259	251	244	239	237
110	661	646	628	608	584	554	520	485	452	421	402	388	376	367	360	354	349	347	347
115	750	732	712	690	666	638	606	575	544	515	494	477	463	451	442	435	431	428	429
120	771	757	741	722	702	677	648	619	590	564	544	527	513	501	493	486	483	481	482
125	740	734	725	712	697	675	649	621	594	569	554	542	532	523	515	507	501	497	496
130	680	679	675	668	659	644	624	604	583	564	551	540	531	523	513	502	493	486	484
135	624	620	614	607	599	588	576	564	551	538	526	515	504	495	489	484	482	482	483
140	570	565	559	552	544	536	525	515	504	494	485	477	470	464	462	463	465	468	472
145	521	521	520	517	513	506	496	486	477	468	464	462	460	460	459	458	457	457	458
150	474	479	483	485	485	483	479	474	469	463	461	459	457	455	452	447	444	441	440
155	455	460	463	465	465	464	460	456	452	448	448	448	447	447	443	437	431	426	423
160	454	454	453	452	450	446	441	436	431	428	430	433	437	440	442	440	438	437	435
165	448	447	445	444	443	441	438	436	434	433	434	435	437	439	440	440	440	440	439
170	442	441	441	440	439	439	439	438	438	438	438	439	439	439	439	439	439	439	439
175	429	428	428	428	428	428	428	428	428	429	429	430	431	431	431	431	431	431	431
180	419	419	419	419	419	419	419	419	419	419	419	419	419	419	419	419	419	419	419

C Range: 0 - 360DEG
C Interval: 5.0DEG
Test Speed: MEDIUM
Temperature:25.3DEG
Operators:
Test Date:2022-08-18

γ Range: 0 - 180DEG
γ Interval: 0.5DEG
Test System:EVERFINE GO-2000_V1 SYSTEM V2.0.406.10
Humidity:65.0%
Test Distance:11.700m [K=0.8547]
Remarks:

LUMINOUS DISTRIBUTION INTENSITY DATA

Test:U:229.78V I:0.2502A P:56.081W PF:0.9755 Freq:49.99Hz Lamp Flux:6830.89x1 lm		
NAME: 10000016	TYPE:	WEIGHT:
SPEC.:	DIM.: 610*310*20	SERIAL No.:
MFR.: A2882172-01	SUR.:0.556*0.257	Shielding Angle:

Table--2

UNIT: cd

C(DEG) γ (DEG)	95	100	105	110	115	120	125	130	135	140	145	150	155	160	165	170	175	180	185
0	829	829	829	829	828	828	828	828	827	827	827	826	826	827	829	830	831	833	833
5	834	834	834	834	834	835	835	835	836	836	836	836	837	838	840	842	843	845	845
10	841	841	841	842	843	844	845	847	849	851	853	855	857	859	862	865	867	869	869
15	843	843	845	847	849	852	855	859	863	867	872	876	881	885	890	894	897	899	900
20	843	844	846	849	853	857	862	868	875	883	891	900	908	916	922	928	933	936	936
25	839	840	843	848	854	860	868	877	886	899	912	924	937	948	957	964	970	974	974
30	832	835	840	846	854	863	872	884	897	913	931	948	965	979	989	998	1005	1009	1009
35	819	822	829	838	849	861	874	889	905	925	946	966	985	1001	1013	1023	1029	1033	1034
40	794	800	809	821	835	851	869	888	908	930	952	974	994	1010	1022	1032	1039	1043	1044
45	769	774	784	797	813	831	851	872	895	919	944	967	988	1006	1018	1028	1034	1038	1039
50	734	739	749	762	777	794	813	833	856	883	910	937	962	982	996	1007	1014	1018	1019
55	689	692	699	709	721	735	752	771	793	821	851	880	908	931	949	962	972	977	976
60	627	627	630	637	648	663	681	701	724	749	776	802	828	851	872	890	903	910	906
65	548	547	549	555	567	583	602	624	646	668	691	713	734	755	777	795	809	817	810
70	456	456	458	463	473	488	505	523	543	564	585	606	626	644	660	674	683	689	684
75	342	346	352	360	370	380	392	405	420	439	458	477	495	508	517	524	527	529	529
80	216	223	231	241	249	253	257	263	271	287	305	322	339	350	355	358	359	358	359
85	86.5	88.3	90.9	94.0	95.3	94.8	94.6	95.1	96.6	103	111	118	125	130	132	132	132	131	131
90	3.01	3.01	3.01	3.03	3.08	3.16	3.24	3.33	3.42	3.44	3.48	3.54	3.64	3.87	4.23	4.59	4.94	5.23	5.29
95	42.2	42.7	43.6	44.8	45.4	45.5	46.0	47.3	49.4	55.0	61.3	67.9	74.3	79.4	82.8	85.6	87.7	89.3	91.4
100	130	134	140	146	151	155	160	167	177	197	218	240	261	277	287	294	298	299	300
105	238	243	249	256	263	269	277	290	306	338	373	410	444	472	492	507	516	520	516
110	348	351	356	364	372	381	394	411	434	471	513	556	598	635	665	690	707	715	704
115	431	435	443	452	464	479	496	518	544	581	621	663	704	743	778	807	828	839	824
120	485	489	497	507	520	537	556	579	606	641	679	718	755	791	824	850	869	878	864
125	501	509	520	533	546	560	576	595	618	651	687	722	757	787	812	832	845	850	838
130	492	504	518	535	550	563	577	593	611	639	667	696	722	743	758	768	774	775	767
135	487	493	500	510	522	536	552	569	586	605	623	641	658	672	684	693	699	700	692
140	472	473	475	478	485	496	508	522	536	549	562	575	588	600	612	621	628	631	624
145	460	463	466	469	473	477	482	489	496	508	520	533	545	555	562	566	569	570	566
150	443	448	454	460	466	471	476	481	486	494	502	510	516	520	519	518	515	513	513
155	428	434	442	450	456	460	464	467	471	476	482	487	491	491	489	485	482	479	480
160	437	440	443	446	446	445	443	442	442	448	454	461	467	472	473	473	473	472	472
165	440	441	441	442	441	440	440	439	440	443	447	451	454	457	459	461	462	462	461
170	439	440	440	441	442	443	443	444	445	446	447	449	450	450	451	452	452	452	451
175	431	432	432	433	434	434	435	436	437	437	437	438	438	438	438	438	438	438	437
180	419	419	419	419	419	419	419	419	419	419	419	419	419	419	419	419	419	419	419

C Range: 0 - 360DEG
C Interval: 5.0DEG
Test Speed: MEDIUM
Temperature:25.3DEG
Operators:
Test Date:2022-08-18

γ Range: 0 - 180DEG
γ Interval: 0.5DEG
Test System:EVERFINE GO-2000_V1 SYSTEM V2.0.406.10
Humidity:65.0%
Test Distance:11.700m [K=0.8547]
Remarks:

LUMINOUS DISTRIBUTION INTENSITY DATA

Test:U:229.78V I:0.2502A P:56.081W PF:0.9755 Freq:49.99Hz Lamp Flux:6830.89x1 lm		
NAME: 10000016	TYPE:	WEIGHT:
SPEC.:	DIM.: 610*310*20	SERIAL No.:
MFR.: A2882172-01	SUR.:0.556*0.257	Shielding Angle:

Table--3

UNIT: cd

C(DEG) γ (DEG)	190	195	200	205	210	215	220	225	230	235	240	245	250	255	260	265	270	275	280
0	833	832	832	831	831	831	830	830	830	830	830	830	829	829	829	829	829	829	829
5	845	845	844	844	843	842	842	841	840	840	839	839	839	838	838	837	837	837	838
10	869	868	867	865	863	861	859	856	855	853	852	850	849	848	847	847	846	847	848
15	899	898	895	892	888	883	878	873	869	866	862	859	857	854	852	851	851	852	854
20	935	932	928	922	914	906	897	888	882	876	871	866	862	858	855	853	853	854	857
25	972	968	962	953	942	930	917	905	895	886	878	871	865	859	855	852	851	853	857
30	1008	1003	996	985	969	953	936	919	906	895	884	875	866	858	851	847	845	849	854
35	1032	1027	1019	1006	989	971	951	931	915	900	886	873	861	850	841	835	832	836	844
40	1042	1037	1028	1016	999	979	959	937	917	897	879	861	845	831	820	813	809	814	823
45	1037	1032	1023	1010	991	971	949	926	903	881	860	841	823	808	796	788	784	789	799
50	1016	1009	998	982	961	937	912	887	864	843	823	804	787	773	761	753	750	755	764
55	970	960	946	926	902	876	849	823	801	780	762	745	732	721	712	708	706	709	716
60	896	882	864	844	821	798	773	749	727	706	687	670	658	650	646	644	644	645	649
65	799	783	763	744	726	707	687	667	645	624	604	587	574	567	563	562	563	563	565
70	676	664	649	633	616	599	580	562	543	524	507	492	480	472	467	464	464	466	470
75	526	521	513	501	484	466	448	430	416	403	391	380	370	359	351	346	343	348	356
80	359	357	352	342	327	310	294	278	271	265	260	255	247	236	227	219	215	223	234
85	130	128	125	121	115	108	102	97.1	95.6	95.0	94.9	94.9	93.5	90.7	88.2	86.6	86.3	90.8	96.5
90	5.27	5.21	5.10	5.00	4.92	4.82	4.72	4.61	4.50	4.39	4.28	4.18	4.09	4.02	3.96	3.91	3.88	3.88	3.90
95	92.9	93.3	92.5	88.5	81.6	74.1	66.8	60.2	58.9	58.6	59.1	59.8	59.2	57.1	55.2	53.7	53.0	55.2	58.2
100	298	294	286	270	249	226	203	183	175	170	167	166	161	154	147	142	139	142	148
105	506	492	472	445	411	376	342	311	297	287	280	276	270	262	255	251	248	249	253
110	685	659	628	590	550	509	469	434	414	398	387	379	371	364	358	354	351	351	352
115	799	766	728	688	648	608	570	534	511	491	475	462	451	442	435	431	428	426	427
120	840	809	773	735	697	658	622	587	562	541	524	509	498	489	483	479	476	474	473
125	820	795	765	732	697	661	627	595	575	558	544	533	521	508	497	488	483	483	486
130	755	739	719	695	669	641	614	589	571	556	543	530	517	502	490	479	472	474	479
135	681	666	649	632	615	598	581	564	547	530	516	502	492	484	479	475	473	470	469
140	613	599	584	570	556	542	529	516	504	493	483	474	468	465	463	462	461	458	455
145	561	554	545	534	522	509	497	486	480	475	471	467	464	459	455	452	449	448	448
150	513	513	512	508	501	494	487	479	474	469	465	460	454	447	440	434	430	431	434
155	482	484	485	484	479	473	468	462	459	457	454	452	446	439	431	424	419	422	426
160	472	471	468	464	456	449	442	436	437	438	441	443	443	441	438	436	433	434	435
165	460	458	456	453	449	445	441	438	438	438	439	440	440	440	439	438	437	436	436
170	450	449	448	447	446	445	444	443	442	442	441	441	440	439	438	437	437	436	436
175	436	435	434	433	433	433	432	432	432	432	431	431	430	429	429	428	427	427	426
180	419	419	419	419	419	419	419	419	419	419	419	419	419	419	419	419	419	419	419

C Range: 0 - 360DEG
C Interval: 5.0DEG
Test Speed: MEDIUM
Temperature:25.3DEG
Operators:
Test Date:2022-08-18

γ Range: 0 - 180DEG
γ Interval: 0.5DEG
Test System:EVERFINE GO-2000_V1 SYSTEM V2.0.406.10
Humidity:65.0%
Test Distance:11.700m [K=0.8547]
Remarks:

LUMINOUS DISTRIBUTION INTENSITY DATA

Test:U:229.78V I:0.2502A P:56.081W PF:0.9755 Freq:49.99Hz Lamp Flux:6830.89x1 lm																	
NAME: 10000016									TYPE:						WEIGHT:		
SPEC.:									DIM.: 610*310*20						SERIAL No.:		
MFR.: A2882172-01									SUR.:0.556*0.257						Shielding Angle:		

Table--4

UNIT: cd

C(DEG) γ (DEG)	285	290	295	300	305	310	315	320	325	330	335	340	345	350	355				
0	829	829	828	828	828	828	827	827	827	826	826	827	828	829	831				
5	838	838	838	839	839	839	839	839	840	840	841	841	843	844	845				
10	849	850	851	853	855	856	858	861	863	865	867	869	872	874	876				
15	856	859	862	866	870	874	879	884	889	894	899	903	907	911	914				
20	861	866	871	877	883	890	898	907	916	925	934	941	947	953	957				
25	863	870	877	886	895	906	917	930	944	957	970	981	990	997	1003				
30	862	872	882	893	905	918	933	951	970	988	1006	1020	1031	1040	1047				
35	854	867	881	895	911	928	947	969	992	1015	1036	1053	1066	1077	1084				
40	836	851	869	888	910	932	955	981	1006	1030	1053	1071	1085	1096	1104				
45	812	829	849	871	895	921	947	976	1004	1031	1055	1075	1090	1101	1109				
50	778	795	814	836	860	886	914	946	977	1008	1037	1059	1076	1088	1096				
55	727	740	757	777	800	826	854	887	922	956	988	1014	1034	1049	1061				
60	656	666	682	703	727	754	783	815	848	881	912	939	961	980	997				
65	571	580	596	620	646	675	705	734	763	791	819	844	866	887	906				
70	477	488	505	526	550	576	604	631	658	684	709	732	752	770	786				
75	368	381	397	414	433	454	476	501	527	553	576	595	609	620	628				
80	247	262	275	287	299	312	327	349	372	394	415	431	441	447	450				
85	103	110	116	120	124	129	136	149	162	176	189	199	206	211	215				
90	3.93	3.97	4.02	4.07	4.13	4.20	4.28	4.42	4.56	4.68	4.75	4.74	4.63	4.45	4.20				
95	61.8	65.6	68.3	70.0	72.2	75.3	79.8	90.2	101	113	123	130	134	135	134				
100	156	164	170	174	180	187	198	220	244	268	291	308	317	323	325				
105	258	266	273	280	289	302	318	348	380	413	444	469	485	498	506				
110	356	361	369	379	392	408	429	461	495	531	566	594	617	635	650				
115	430	436	445	458	474	493	515	545	578	611	644	672	695	716	734				
120	475	480	488	500	515	534	556	585	616	648	679	705	726	744	759				
125	492	500	508	518	530	544	561	588	617	646	673	696	712	725	734				
130	487	497	507	517	529	541	556	576	597	617	637	652	663	671	677				
135	470	473	480	490	502	515	529	542	555	567	578	589	599	608	617				
140	453	452	455	460	468	476	486	496	506	517	528	538	547	555	563				
145	449	451	452	454	456	460	465	473	483	493	502	509	514	518	520				
150	438	443	447	450	453	457	460	466	472	477	481	483	483	482	479				
155	431	437	440	441	442	443	444	449	454	458	462	464	464	462	459				
160	435	436	434	431	428	426	425	429	435	441	447	451	454	455	455				
165	436	436	435	434	433	433	433	435	438	440	443	445	446	447	447				
170	436	436	436	436	437	438	438	439	439	440	440	441	441	441	442				
175	426	426	426	426	427	427	428	428	428	428	428	428	428	428	429				
180	419	419	419	419	419	419	419	419	419	419	419	419	419	419	419				

C Range: 0 - 360DEG
C Interval: 5.0DEG
Test Speed: MEDIUM
Temperature:25.3DEG
Operators:
Test Date:2022-08-18

γ Range: 0 - 180DEG
γ Interval: 0.5DEG
Test System:EVERFINE GO-2000_V1 SYSTEM V2.0.406.10
Humidity:65.0%
Test Distance:11.700m [K=0.8547]
Remarks: