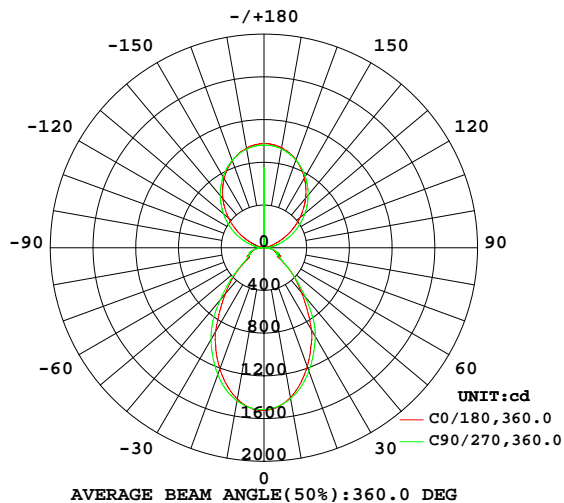


## LUMINAIRE PHOTOMETRIC TEST REPORT

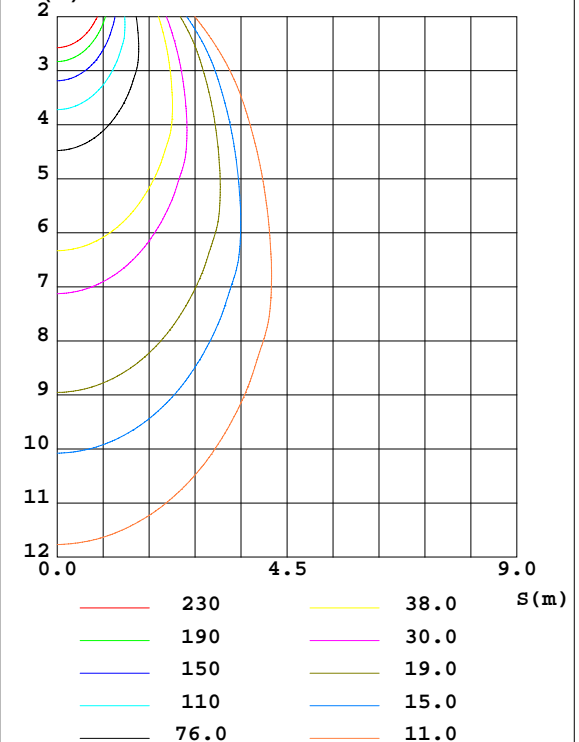
Test:U:229.68V I:0.2186A P:48.734W PF:0.9706 Freq:49.99Hz Lamp Flux:4586.96x1 lm		
NAME:	TYPE:	WEIGHT:
SPEC.:	DIM.: 984*65*35	SERIAL No.:
MFR.: A2883174-07	SUR.:0.5*0.055	Shielding Angle:

DATA OF LAMP		PHOTOMETRIC DATA Eff: 94.12 lm/W			
MODEL		Imax(cd)	1524	S/MH(C0/180)	0.97
NOMINAL POWER(W)		LOR(%)	100.0	S/MH(C90/270)	1.03
RATED VOLTAGE(V)	230.0	TOTAL FLUX(lm)	4587.0	$\eta$ UP,DN(C0-180)	24.9,24.9
NOMINAL FLUX(lm)	4586.96	CIE CLASS	DIFFUSE	$\eta$ UP,DN(C180-360)	24.7,25.5
LAMPS INSIDE	1	$\eta$ up(%)	49.6	CIBSE SHR NOM	1.00
TEST VOLTAGE(V)	230.0	$\eta$ down(%)	50.4	CIBSE SHR MAX	1.10

LUMINOUS INTENSITY DISTRIBUTION DIAGRAM



C0 PLANE ISOLUX DIAGRAM (UNIT:lx)



C Range: 0 - 360DEG  
C Interval: 5.0DEG  
Test Speed: MEDIUM  
Temperature:25.3DEG  
Operators:  
Test Date:2023-06-01

$\gamma$  Range: 0 - 180DEG  
 $\gamma$  Interval: 0.5DEG  
Test System:EVERFINE GO-2000\_V1 SYSTEM V2.0.406.10  
Humidity:65.0%  
Test Distance:11.700m [K=0.8547]  
Remarks:

## ZONAL FLUX DIAGRAM

## ZONAL FLUX DIAGRAM:

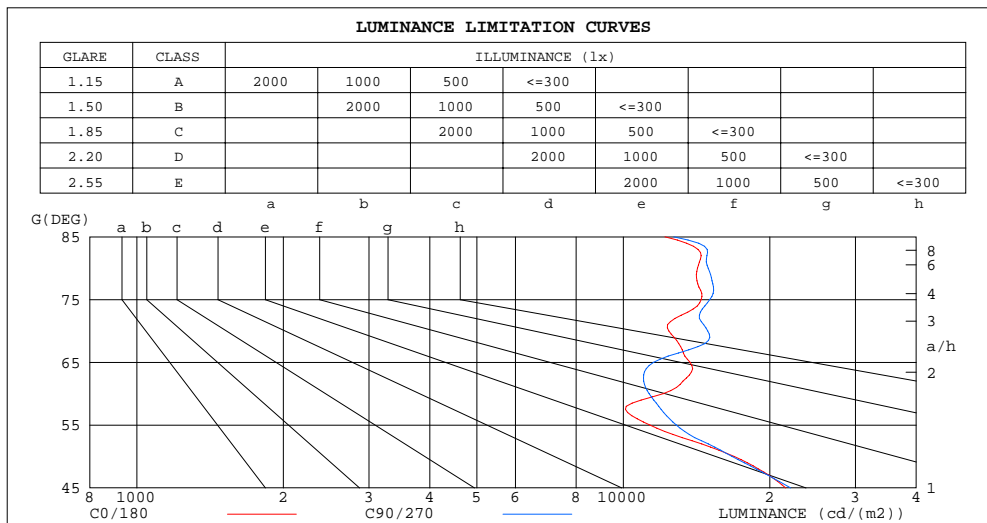
$\gamma$	C0	C45	C90	C135	C180	C225	C270	C315	$\gamma$	$\Phi$ zone	$\Phi$ total	$\%lum, lamp$
10	1425	1425	1434	1428	1439	1449	1455	1435	0- 10	140.9	140.9	3.07,3.07
20	1183	1199	1229	1210	1207	1239	1264	1217	10- 20	375.4	516.2	11.3,11.3
30	888.7	903.4	960.0	918.1	907.5	954.4	992.9	923.5	20- 30	495.1	1011	22,22
40	547.0	575.2	600.8	584.6	565.2	615.7	637.2	592.4	30- 40	475.9	1487	32.4,32.4
50	298.7	346.3	295.6	338.9	306.7	373.7	322.7	344.5	40- 50	349.2	1836	40,40
60	166.0	124.1	155.4	117.4	164.5	146.0	175.3	121.9	50- 60	214.0	2050	44.7,44.7
70	116.6	69.47	140.2	79.30	132.9	84.39	147.5	75.69	60- 70	129.2	2180	47.5,47.5
80	67.85	63.15	71.34	74.47	84.00	77.15	78.49	62.08	70- 80	93.92	2274	49.6,49.6
90	1.306	1.194	0.8591	4.648	6.796	3.668	1.031	1.400	80- 90	37.82	2311	50.4,50.4
100	20.62	34.99	87.78	35.06	20.22	32.95	84.34	33.21	90-100	18.23	2330	50.8,50.8
110	104.2	164.1	212.7	165.3	104.6	157.9	208.1	163.8	100-110	102.7	2432	53,53
120	266.6	315.9	353.2	316.4	263.7	308.2	350.0	319.1	110-120	231.8	2664	58.1,58.1
130	439.7	469.3	498.4	469.4	432.3	459.8	495.3	474.8	120-130	347.7	3012	65.7,65.7
140	605.9	621.5	643.4	622.4	599.3	609.4	637.9	626.1	130-140	419.8	3432	74.8,74.8
150	756.4	758.2	771.6	759.5	747.9	745.9	767.4	764.3	140-150	432.0	3864	84.2,84.2
160	876.2	866.6	874.6	870.0	867.8	857.0	871.0	873.9	150-160	376.1	4240	92.4,92.4
170	952.4	936.1	940.4	943.0	947.6	931.1	938.4	944.3	160-170	256.3	4496	98,98
180	976.2	976.2	976.2	976.2	976.2	976.2	976.2	976.2	170-180	90.94	4587	100,100
DEG	LUMINOUS INTENSITY:cd									UNIT:lm		

C Range: 0 - 360DEG  
 C Interval: 5.0DEG  
 Test Speed: MEDIUM  
 Temperature:25.3DEG  
 Operators:  
 Test Date:2023-06-01

$\gamma$  Range: 0 - 180DEG  
 $\gamma$  Interval: 0.5DEG  
 Test System:EVERFINE GO-2000\_V1 SYSTEM V2.0.406.10  
 Humidity:65.0%  
 Test Distance:11.700m [K=0.8547]  
 Remarks:

## LUMINANCE LIMITATION CURVES

Test:U:229.68V I:0.2186A P:48.734W PF:0.9706 Freq:49.99Hz Lamp Flux:4586.96x1 lm		
NAME:	TYPE:	WEIGHT:
SPEC.:	DIM.: 984*65*35	SERIAL No.:
MFR.: A2883174-07	SUR.:0.5*0.055	Shielding Angle:



LUMINANCE cd/(m2)		
G(DEG)	C0/180	C90/270
85	12175	12694
80	14209	14940
75	14448	15057
70	12398	14907
65	13712	11537
60	12076	11302
55	11341	12850
50	16900	16724
45	21559	22078

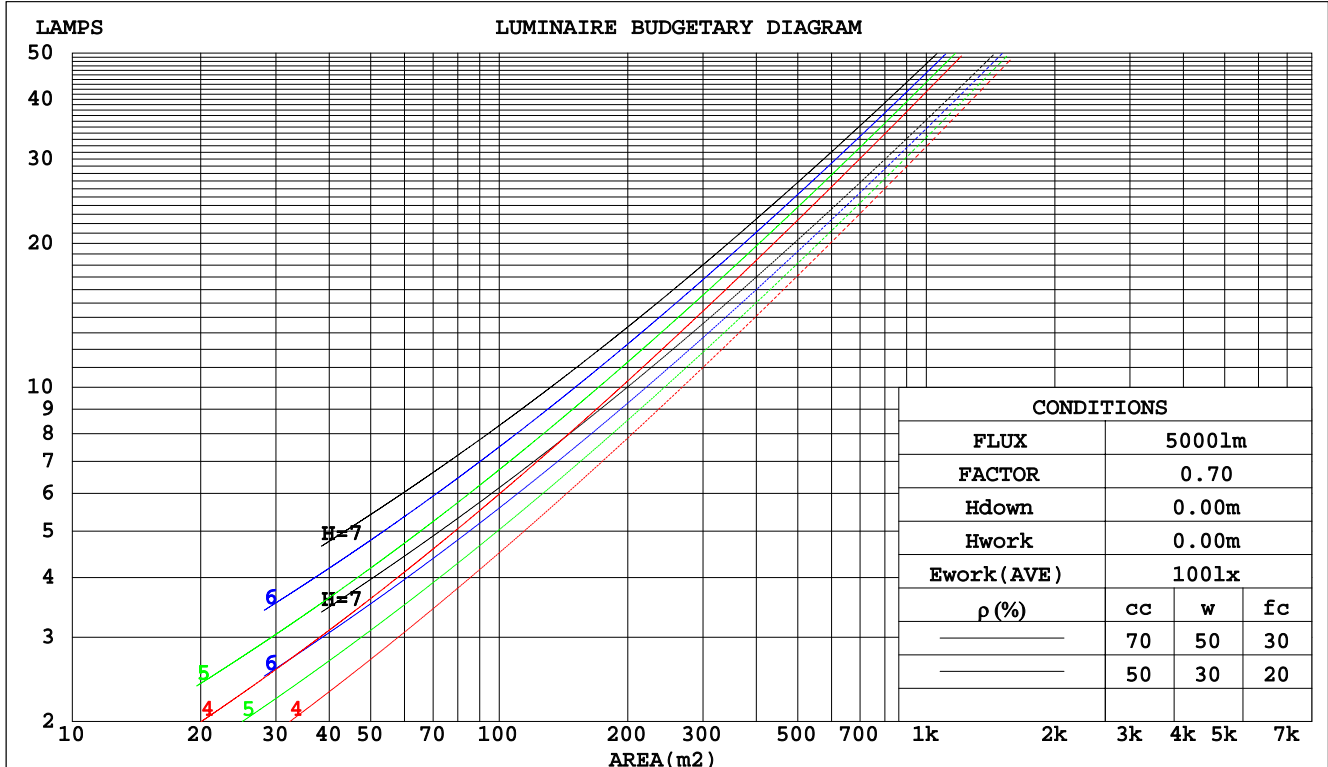
C Range: 0 - 360DEG  
C Interval: 5.0DEG  
Test Speed: MEDIUM  
Temperature:25.3DEG  
Operators:  
Test Date:2023-06-01

$\gamma$  Range: 0 - 180DEG  
 $\gamma$  Interval: 0.5DEG  
Test System:EVERFINE GO-2000\_V1 SYSTEM V2.0.406.10  
Humidity:65.0%  
Test Distance:11.700m [K=0.8547]  
Remarks:

## CU AND LUMINAIRE BUDGETARY ESTIMATE DIAGRAM

Test:U:229.68V I:0.2186A P:48.734W PF:0.9706 Freq:49.99Hz Lamp Flux:4586.96x1 lm		
NAME:	TYPE:	WEIGHT:
SPEC.:	DIM.: 984*65*35	SERIAL No.:
MFR.: A2883174-07	SUR.:0.5*0.055	Shielding Angle:

pcc	80%			70%			50%			30%			10%			0
pw	50%	30%	10%	50%	30%	10%	50%	30%	10%	50%	30%	10%	50%	30%	10%	0
pfc	20%			20%			20%			20%			20%			0
RCR	RCR:Room Cavity Ratio			Coefficients of Utilization(CU)												
0.0	1.07	1.07	1.07	.99	.99	.99	.84	.84	.84	.69	.69	.69	.56	.56	.56	.50
1.0	.95	.91	.88	.88	.85	.82	.74	.72	.70	.62	.61	.59	.51	.50	.49	.44
2.0	.84	.78	.74	.78	.73	.69	.67	.63	.60	.56	.54	.51	.46	.45	.43	.39
3.0	.75	.68	.63	.70	.64	.59	.60	.55	.52	.51	.48	.45	.42	.40	.38	.34
4.0	.67	.60	.54	.63	.56	.51	.54	.49	.45	.46	.42	.40	.39	.36	.34	.30
5.0	.61	.53	.47	.57	.50	.45	.49	.44	.40	.42	.38	.35	.35	.33	.31	.27
6.0	.55	.47	.42	.51	.45	.40	.45	.40	.36	.39	.35	.32	.33	.30	.28	.25
7.0	.50	.43	.37	.47	.40	.36	.41	.36	.32	.35	.31	.28	.30	.27	.25	.23
8.0	.46	.38	.33	.43	.36	.32	.38	.33	.29	.33	.29	.26	.28	.25	.23	.21
9.0	.42	.35	.30	.40	.33	.29	.35	.30	.26	.30	.26	.24	.26	.23	.21	.19
10.0	.39	.32	.28	.37	.30	.26	.32	.27	.24	.28	.24	.22	.25	.22	.19	.18



C Range: 0 - 360DEG  
C Interval: 5.0DEG  
Test Speed: MEDIUM  
Temperature:25.3DEG  
Operators:  
Test Date:2023-06-01

γ Range: 0 - 180DEG  
γ Interval: 0.5DEG  
Test System:EVERFINE GO-2000\_V1 SYSTEM V2.0.406.10  
Humidity:65.0%  
Test Distance:11.700m [K=0.8547]  
Remarks:

## WEC AND CCEC

Test:U:229.68V I:0.2186A P:48.734W PF:0.9706 Freq:49.99Hz Lamp Flux:4586.96x1 lm		
NAME:	TYPE:	WEIGHT:
SPEC.:	DIM.: 984*65*35	SERIAL No.:
MFR.: A2883174-07	SUR.:0.5*0.055	Shielding Angle:

pcc	80%			70%			50%			30%			10%			0
pw	50%	30%	10%	50%	30%	10%	50%	30%	10%	50%	30%	10%	50%	30%	10%	0
pfc	20%			20%			20%			20%			20%			0
RCR	RCR:Room Cavity Ratio						Wall Exitance Coefficients(WEC)									
0.0																
1.0	.257	.146	.046	.235	.134	.043	.194	.111	.036	.157	.090	.029	.122	.071	.023	
2.0	.239	.131	.040	.219	.121	.037	.182	.101	.031	.147	.083	.026	.116	.065	.021	
3.0	.222	.118	.035	.204	.109	.033	.170	.092	.028	.138	.076	.023	.109	.060	.019	
4.0	.206	.107	.031	.190	.099	.029	.158	.084	.025	.129	.069	.021	.102	.056	.017	
5.0	.192	.098	.028	.177	.091	.026	.148	.077	.023	.121	.064	.019	.096	.051	.015	
6.0	.180	.090	.026	.166	.084	.024	.139	.071	.021	.114	.059	.017	.091	.048	.014	
7.0	.168	.083	.024	.155	.077	.022	.131	.066	.019	.108	.055	.016	.086	.045	.013	
8.0	.158	.077	.022	.146	.072	.020	.123	.062	.018	.102	.052	.015	.082	.042	.012	
9.0	.149	.072	.020	.138	.067	.019	.117	.058	.016	.096	.048	.014	.077	.039	.011	
10.0	.141	.068	.019	.131	.063	.018	.111	.054	.015	.092	.046	.013	.074	.037	.011	

pcc	80%			70%			50%			30%			10%			0
pw	50%	30%	10%	50%	30%	10%	50%	30%	10%	50%	30%	10%	50%	30%	10%	0
pfc	20%			20%			20%			20%			20%			0
RCR	RCR:Room Cavity Ratio						Ceiling Cavity Exitance Coefficients(CCEC)									
0.0	.568	.568	.568	.486	.486	.486	.332	.332	.332	.190	.190	.190	.061	.061	.061	
1.0	.558	.538	.520	.477	.462	.447	.326	.317	.309	.188	.184	.180	.060	.059	.058	
2.0	.549	.516	.488	.470	.444	.422	.322	.307	.294	.186	.179	.173	.060	.058	.056	
3.0	.541	.500	.467	.464	.431	.405	.318	.299	.284	.184	.175	.167	.059	.057	.055	
4.0	.534	.487	.452	.458	.421	.393	.315	.294	.277	.182	.172	.164	.059	.056	.054	
5.0	.527	.478	.442	.453	.413	.384	.312	.289	.271	.181	.170	.161	.058	.055	.053	
6.0	.521	.470	.434	.448	.407	.378	.309	.285	.267	.179	.168	.159	.058	.055	.052	
7.0	.515	.464	.428	.443	.402	.373	.306	.282	.264	.178	.166	.157	.057	.054	.052	
8.0	.509	.459	.424	.438	.398	.370	.303	.279	.262	.176	.165	.156	.057	.054	.052	
9.0	.504	.454	.420	.434	.394	.367	.301	.277	.260	.175	.164	.155	.057	.054	.051	
10.0	.499	.450	.418	.431	.391	.365	.299	.275	.259	.174	.163	.155	.056	.053	.051	

C Range: 0 - 360DEG  
C Interval: 5.0DEG  
Test Speed: MEDIUM  
Temperature:25.3DEG  
Operators:  
Test Date:2023-06-01

γ Range: 0 - 180DEG  
γ Interval: 0.5DEG  
Test System:EVERFINE GO-2000\_V1 SYSTEM V2.0.406.10  
Humidity:65.0%  
Test Distance:11.700m [K=0.8547]  
Remarks:

UGR(Unified Glare Rating) Table

Test:U:229.68V I:0.2186A P:48.734W PF:0.9706 Freq:49.99Hz Lamp Flux:4586.96x1 lm											
NAME:					TYPE:			WEIGHT:			
SPEC.:					DIM.: 984*65*35			SERIAL No.:			
MFR.: A2883174-07					SUR.:0.5*0.055			Shielding Angle:			
ceiling/cavity	0.7	0.7	0.5	0.5	0.3	0.7	0.7	0.5	0.5	0.3	
walls	0.5	0.3	0.5	0.3	0.3	0.5	0.3	0.5	0.3	0.3	
working plane	0.2	0.2	0.2	0.2	0.2	0.2	0.2	0.2	0.2	0.2	
Room dimensions		Viewed crosswise					Viewed endwise				
x = 2H y = 2H	2H	17.8	18.7	18.7	19.5	20.6	18.0	18.8	18.8	19.7	20.7
	3H	18.7	19.5	19.6	20.4	21.5	18.9	19.7	19.8	20.5	21.6
	4H	19.3	20.0	20.2	20.9	22.0	19.5	20.2	20.4	21.1	22.2
	6H	19.8	20.5	20.8	21.4	22.6	20.1	20.7	21.0	21.6	22.8
	8H	20.0	20.7	21.0	21.6	22.8	20.3	20.9	21.2	21.8	23.0
	12H	20.2	20.8	21.1	21.7	22.9	20.4	21.0	21.3	21.9	23.1
4H	2H	17.7	18.4	18.6	19.3	20.4	17.8	18.6	18.7	19.4	20.6
	3H	18.8	19.4	19.7	20.3	21.5	18.9	19.5	19.8	20.4	21.6
	4H	19.5	20.1	20.5	21.0	22.2	19.6	20.2	20.6	21.1	22.3
	6H	20.3	20.8	21.3	21.7	23.0	20.5	20.9	21.4	21.9	23.1
	8H	20.6	21.0	21.6	22.0	23.3	20.8	21.2	21.8	22.2	23.4
	12H	20.8	21.2	21.8	22.2	23.4	21.0	21.4	22.0	22.4	23.6
8H	4H	19.6	20.1	20.6	21.0	22.3	19.7	20.2	20.7	21.1	22.4
	6H	20.6	20.9	21.6	21.9	23.2	20.7	21.1	21.7	22.1	23.4
	8H	21.0	21.3	22.0	22.3	23.6	21.2	21.5	22.2	22.5	23.8
	12H	21.3	21.5	22.3	22.5	23.9	21.5	21.7	22.5	22.8	24.1
12H	4H	19.6	20.0	20.6	21.0	22.3	19.7	20.1	20.7	21.1	22.4
	6H	20.6	20.9	21.6	21.9	23.3	20.8	21.1	21.8	22.1	23.4
	8H	21.1	21.3	22.1	22.3	23.7	21.2	21.5	22.3	22.5	23.9
Variations with the observer position at spacings:											
S = 1.0H	+ 0.4 / - 0.6					+ 0.4 / - 0.5					
1.5H	+ 0.3 / - 0.5					+ 0.3 / - 0.5					
2.0H	+ 0.5 / - 0.6					+ 0.8 / - 0.6					

CIE Pub.117, 4587 lm Total Lamp Luminous Flux Corrected ( $8\log(F/F_0) = 5.3$ )

C Range: 0 - 360DEG  
 C Interval: 5.0DEG  
 Test Speed: MEDIUM  
 Temperature:25.3DEG  
 Operators:  
 Test Date:2023-06-01

γ Range: 0 - 180DEG  
 γ Interval: 0.5DEG  
 Test System:EVERFINE GO-2000\_V1 SYSTEM V2.0.406.10  
 Humidity:65.0%  
 Test Distance:11.700m [K=0.8547]  
 Remarks:

## UTILIZATION FACTORS TABLE

Test:U:229.68V I:0.2186A P:48.734W PF:0.9706 Freq:49.99Hz Lamp Flux:4586.96x1 lm		
NAME:	TYPE:	WEIGHT:
SPEC.:	DIM.: 984*65*35	SERIAL No.:
MFR.: A2883174-07	SUR.:0.5*0.055	Shielding Angle:

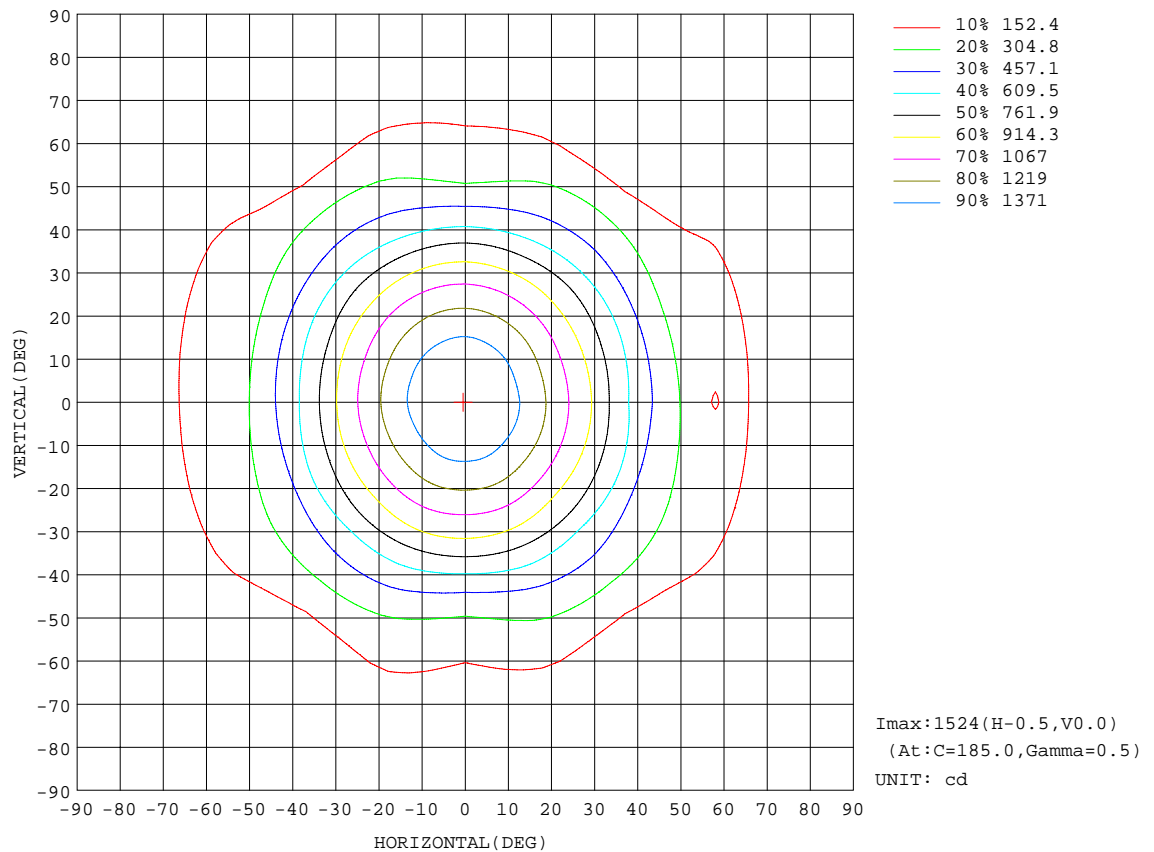
REFLECTANCE										
Ceiling	0.8	0.8	0.8	0.7	0.7	0.7	0.5	0.5	0.5	0
Walls	0.7	0.5	0.3	0.7	0.5	0.3	0.7	0.5	0.3	0
Working plane	0.2	0.2	0.2	0.2	0.2	0.2	0.2	0.2	0.2	0
ROOM INDEX	UTILIZATION FACTORS(PERCENT) $k(RI) \times RCR = 5$									
$k = 0.60$	50	40	35	48	39	34	43	36	32	25
0.80	59	49	43	56	47	41	50	43	38	29
1.00	66	56	50	62	53	48	55	49	44	33
1.25	73	63	56	68	60	54	60	54	49	36
1.50	77	68	62	72	64	59	63	57	53	38
2.00	84	75	69	78	71	65	67	62	58	40
2.50	87	80	74	81	75	70	70	65	62	42
3.00	90	84	78	84	78	74	72	68	65	43
4.00	94	89	84	87	83	79	75	71	69	45
5.00	97	92	88	90	86	82	76	74	71	46
ROOM INDEX	UF(total)									Direct
According to DIN EN 13032-2 2004			Suspended					SHRNOM = 1.25		

C Range: 0 - 360DEG  
C Interval: 5.0DEG  
Test Speed: MEDIUM  
Temperature:25.3DEG  
Operators:  
Test Date:2023-06-01

$\gamma$  Range: 0 - 180DEG  
 $\gamma$  Interval: 0.5DEG  
Test System:EVERFINE GO-2000\_V1 SYSTEM V2.0.406.10  
Humidity:65.0%  
Test Distance:11.700m [K=0.8547]  
Remarks:

## ISOCANDELA DIAGRAM

Test:U:229.68V I:0.2186A P:48.734W PF:0.9706 Freq:49.99Hz Lamp Flux:4586.96x1 lm		
NAME:	TYPE:	WEIGHT:
SPEC.:	DIM.: 984*65*35	SERIAL No.:
MFR.: A2883174-07	SUR.:0.5*0.055	Shielding Angle:

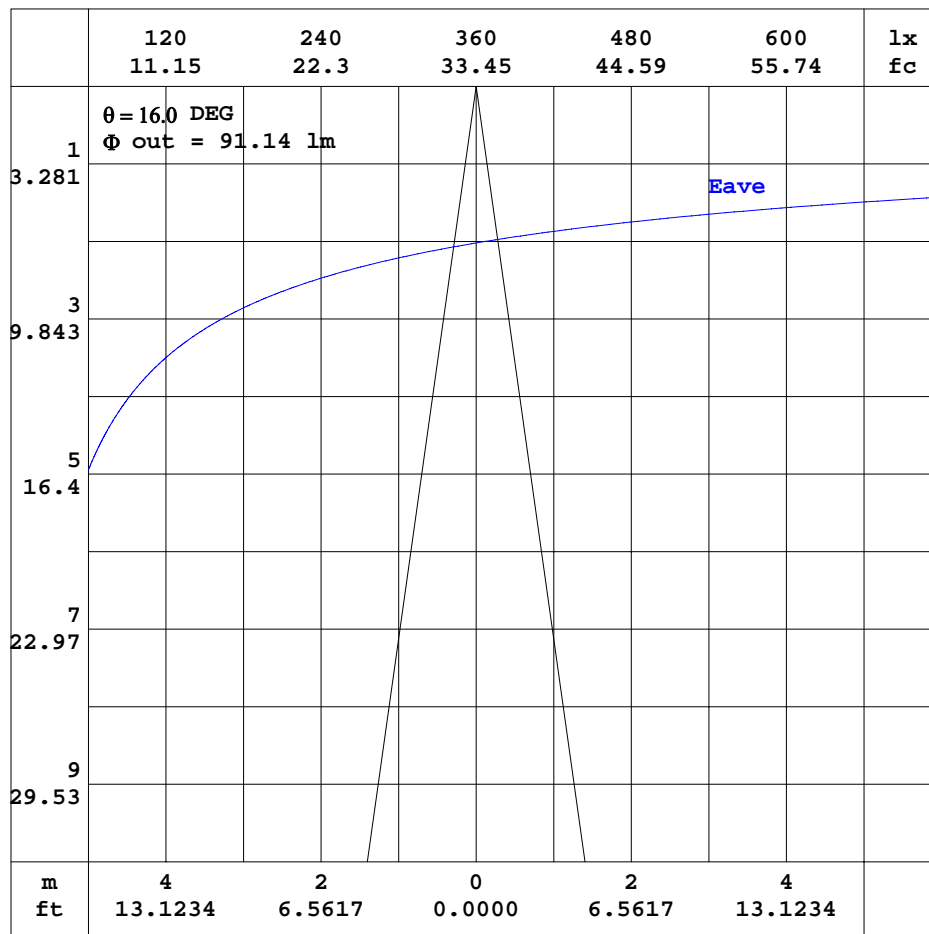


C Range: 0 - 360DEG  
C Interval: 5.0DEG  
Test Speed: MEDIUM  
Temperature:25.3DEG  
Operators:  
Test Date:2023-06-01

$\gamma$  Range: 0 - 180DEG  
 $\gamma$  Interval: 0.5DEG  
Test System:EVERFINE GO-2000\_V1 SYSTEM V2.0.406.10  
Humidity:65.0%  
Test Distance:11.700m [K=0.8547]  
Remarks:

## AAI CURVES

Test:U:229.68V I:0.2186A P:48.734W PF:0.9706 Freq:49.99Hz Lamp Flux:4586.96x1 lm		
NAME:	TYPE:	WEIGHT:
SPEC.:	DIM.: 984*65*35	SERIAL No.:
MFR.: A2883174-07	SUR.:0.5*0.055	Shielding Angle:



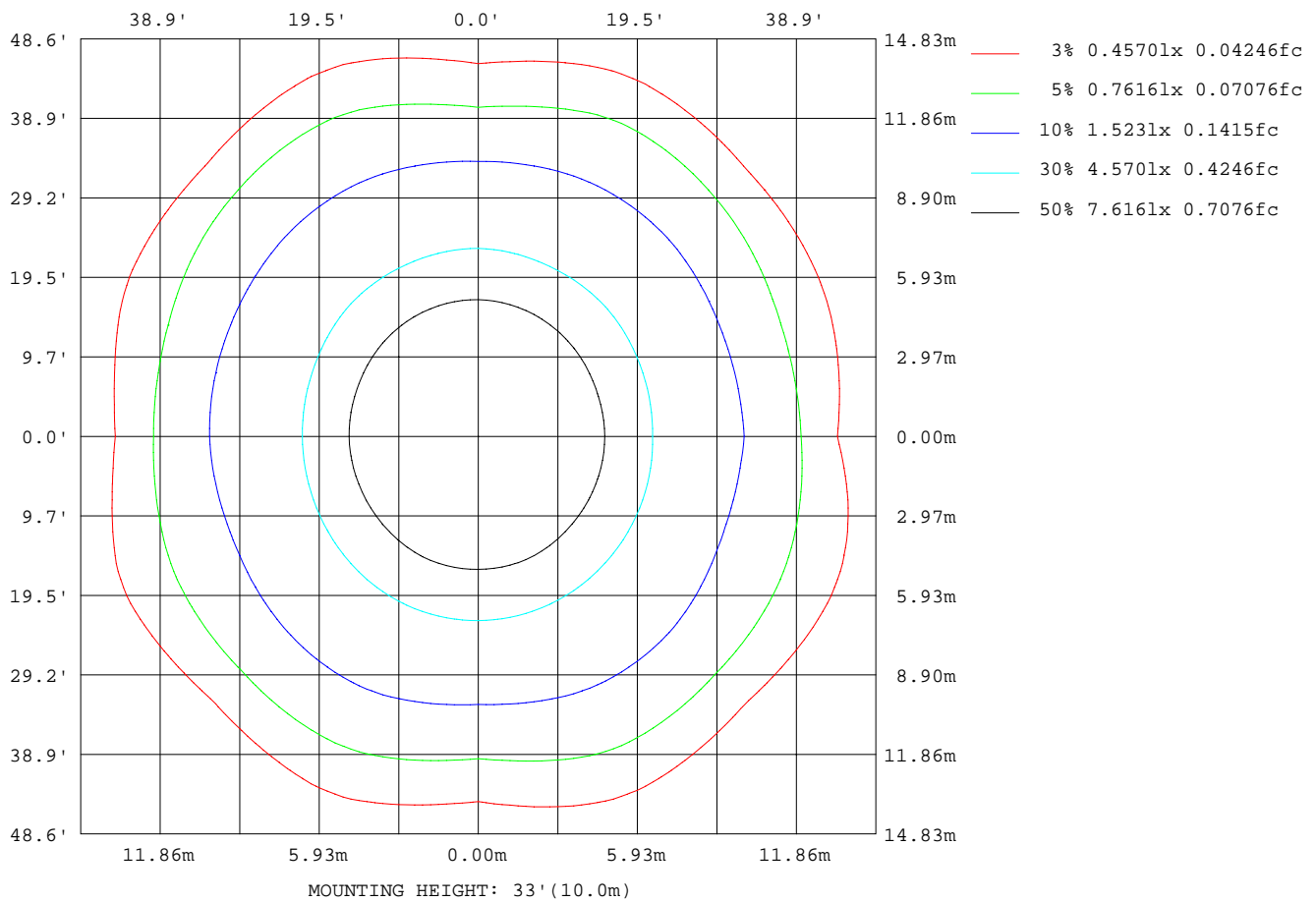
Note: The Curves indicate the illuminated area and the average illumination when the luminaire is at different distance.

C Range: 0 - 360DEG  
 C Interval: 5.0DEG  
 Test Speed: MEDIUM  
 Temperature: 25.3DEG  
 Operators:  
 Test Date: 2023-06-01

$\gamma$  Range: 0 - 180DEG  
 $\gamma$  Interval: 0.5DEG  
 Test System: EVERFINE GO-2000\_V1 SYSTEM V2.0.406.10  
 Humidity: 65.0%  
 Test Distance: 11.700m [K=0.8547]  
 Remarks:

### ISOLUX DIAGRAM

Test:U:229.68V I:0.2186A P:48.734W PF:0.9706 Freq:49.99Hz Lamp Flux:4586.96x1 lm		
NAME:	TYPE:	WEIGHT:
SPEC.:	DIM.: 984*65*35	SERIAL No.:
MFR.: A2883174-07	SUR.:0.5*0.055	Shielding Angle:



C Range: 0 - 360DEG  
 C Interval: 5.0DEG  
 Test Speed: MEDIUM  
 Temperature:25.3DEG  
 Operators:  
 Test Date:2023-06-01

γ Range: 0 - 180DEG  
 γ Interval: 0.5DEG  
 Test System:EVERFINE GO-2000\_V1 SYSTEM V2.0.406.10  
 Humidity:65.0%  
 Test Distance:11.700m [K=0.8547]  
 Remarks:

## LED Avg.L Report

Test:U:229.68V I:0.2186A P:48.734W PF:0.9706 Freq:49.99Hz Lamp Flux:4586.96x1 lm		
NAME:	TYPE:	WEIGHT:
SPEC.:	DIM.: 984*65*35	SERIAL No.:
MFR.: A2883174-07	SUR.:0.5*0.055	Shielding Angle:

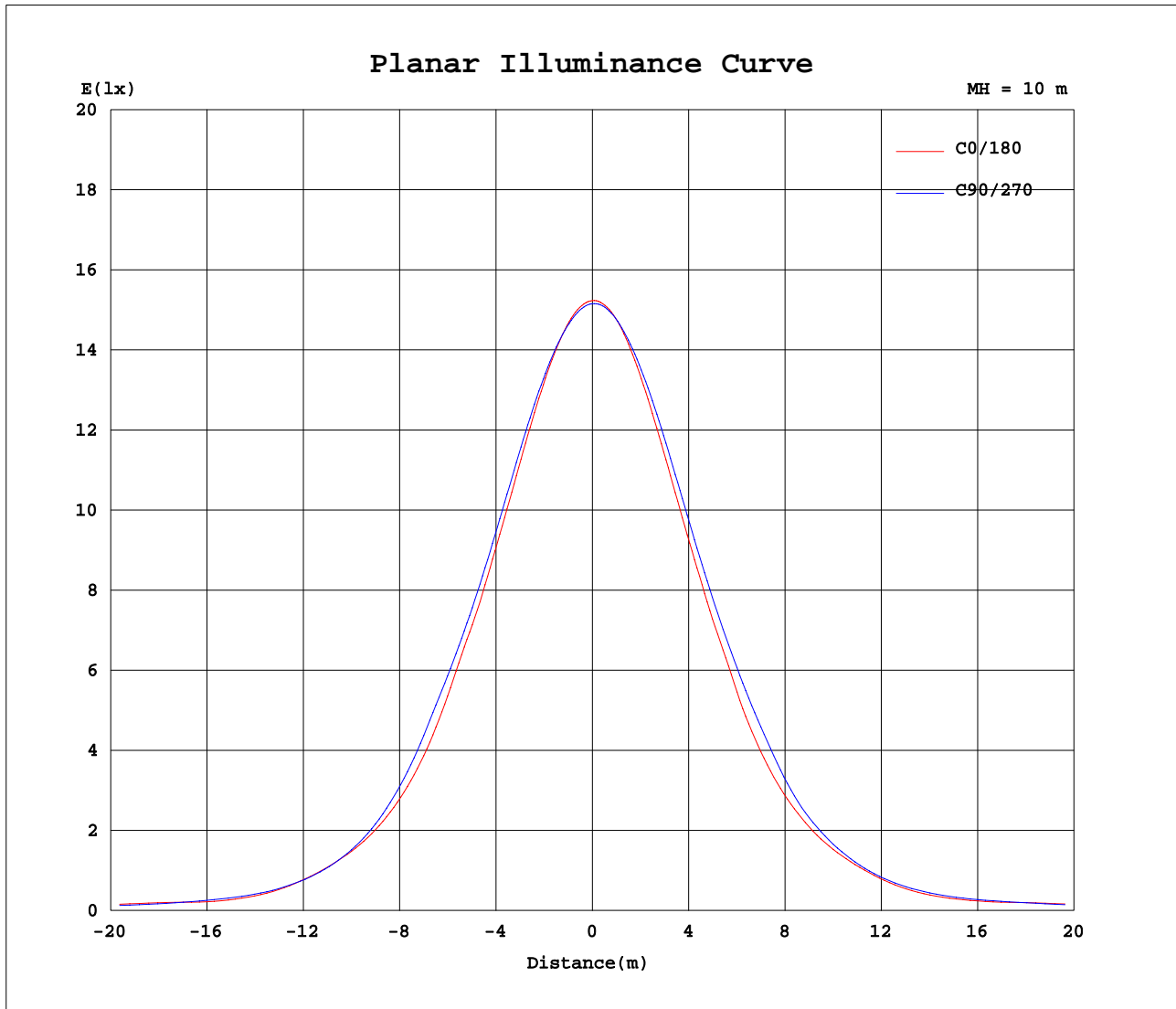
AvgL	cd/m2
L_0~180(65)av	13757
L_0~180(75)av	14792
L_0~180(85)av	14614
L_90~270(65)av	12071
L_90~270(75)av	15947
L_90~270(85)av	14909
L_45(65)av	6345
L_45(75)av	11057
L_45(85)av	13465

Standard: GB/T 29293-2012

C Range: 0 - 360DEG  
C Interval: 5.0DEG  
Test Speed: MEDIUM  
Temperature:25.3DEG  
Operators:  
Test Date:2023-06-01

γ Range: 0 - 180DEG  
γ Interval: 0.5DEG  
Test System:EVERFINE GO-2000\_V1 SYSTEM V2.0.406.10  
Humidity:65.0%  
Test Distance:11.700m [K=0.8547]  
Remarks:

## Planar Illuminance Curve



C Range: 0 - 360DEG  
C Interval: 5.0DEG  
Test Speed: MEDIUM  
Temperature: 25.3DEG  
Operators:  
Test Date: 2023-06-01

$\gamma$  Range: 0 - 180DEG  
 $\gamma$  Interval: 0.5DEG  
Test System: EVERFINE GO-2000\_V1 SYSTEM V2.0.406.10  
Humidity: 65.0%  
Test Distance: 11.700m [K=0.8547]  
Remarks:

## LUMINOUS DISTRIBUTION INTENSITY DATA

Test:U:229.68V I:0.2186A P:48.734W PF:0.9706 Freq:49.99Hz Lamp Flux:4586.96x1 lm																		
NAME:									TYPE:					WEIGHT:				
SPEC.:									DIM.: 984*65*35					SERIAL No.:				
MFR.: A2883174-07									SUR.:0.5*0.055					Shielding Angle:				

Table--1

UNIT: cd

C(DEG) γ (DEG)	0	5	10	15	20	25	30	35	40	45	50	55	60	65	70	75	80	85	90
0	1523	1523	1522	1522	1521	1521	1520	1520	1519	1519	1518	1518	1518	1517	1517	1517	1516	1516	1516
5	1496	1496	1495	1495	1494	1493	1493	1492	1491	1491	1491	1491	1492	1492	1492	1492	1492	1491	1491
10	1425	1425	1424	1424	1424	1424	1424	1424	1425	1425	1427	1429	1430	1432	1433	1434	1434	1434	1434
15	1317	1317	1317	1317	1318	1319	1320	1321	1323	1325	1329	1333	1336	1340	1342	1344	1345	1346	1346
20	1183	1183	1184	1185	1186	1188	1190	1193	1196	1199	1205	1211	1216	1221	1225	1227	1228	1229	1229
25	1036	1036	1037	1038	1040	1042	1045	1049	1053	1058	1065	1072	1079	1086	1090	1093	1095	1096	1096
30	889	890	891	893	894	895	896	897	900	903	912	922	932	942	949	954	957	959	960
35	704	709	714	719	724	730	735	741	747	753	760	767	774	780	785	789	792	794	795
40	547	555	561	566	571	573	573	573	574	575	584	593	602	610	613	611	608	604	601
45	419	411	405	403	404	411	421	434	446	458	463	466	468	467	461	452	443	435	429
50	299	306	312	318	324	329	334	338	342	346	352	358	361	361	353	337	321	306	296
55	179	204	224	240	250	252	248	241	233	227	234	242	250	256	253	240	226	213	203
60	166	177	184	187	186	178	163	148	134	124	135	149	165	180	184	178	170	162	155
65	159	159	156	151	144	132	115	98.1	84.1	74.3	83.1	96.1	111	126	135	137	137	136	134
70	117	115	113	110	105	98.6	89.9	81.5	74.4	69.5	71.9	76.9	83.8	92.3	103	114	125	134	140
75	103	97.5	92.7	88.2	84.1	80.2	76.4	73.4	71.1	69.7	70.1	71.5	74.0	77.4	83.0	90.4	97.5	103	107
80	67.9	66.5	65.4	64.4	63.7	63.2	63.0	62.9	63.0	63.2	63.2	63.4	63.7	64.2	65.3	67.0	68.6	70.1	71.3
85	29.2	29.5	29.6	29.7	29.6	29.3	28.7	28.1	27.7	27.5	28.4	29.5	30.6	31.6	31.8	31.3	30.8	30.4	30.4
90	1.31	1.33	1.35	1.36	1.35	1.34	1.32	1.28	1.24	1.19	1.13	1.06	0.99	0.93	0.84	0.74	0.69	0.72	0.86
95	5.68	5.73	5.85	6.05	6.32	6.57	6.82	7.23	7.86	8.74	9.94	11.5	13.5	16.1	20.2	25.7	30.9	35.3	38.2
100	20.6	20.4	20.7	21.3	22.5	23.8	25.4	27.6	30.8	35.0	42.5	50.8	59.3	67.6	74.5	79.7	83.7	86.4	87.8
105	49.6	49.3	50.3	52.6	56.0	61.0	67.5	74.9	83.1	91.9	102	112	122	130	137	142	145	147	147
110	104	105	108	112	117	124	134	143	154	164	174	183	191	198	204	208	211	212	213
115	181	182	185	189	194	201	210	220	230	240	248	256	263	270	275	278	280	282	282
120	267	267	269	272	276	282	290	298	307	316	323	330	337	342	346	350	352	353	353
125	354	353	354	356	359	364	371	378	385	393	399	405	411	416	420	423	424	425	426
130	440	439	439	440	442	446	451	457	463	469	475	480	485	489	493	495	497	498	498
135	525	522	521	521	523	526	531	537	543	549	553	557	560	563	566	569	571	573	573
140	606	603	601	601	602	604	607	612	617	621	625	629	632	635	637	640	642	643	643
145	684	680	678	676	676	678	680	684	688	692	695	698	700	703	705	707	708	710	710
150	756	752	749	746	745	746	748	751	755	758	760	762	764	766	767	769	770	771	772
155	820	815	811	809	807	807	809	811	814	817	818	820	821	822	823	825	826	827	828
160	876	871	867	863	861	861	861	863	865	867	868	869	869	870	871	872	873	874	875
165	920	914	909	906	903	902	902	904	905	907	907	908	908	909	910	910	911	912	912
170	952	947	942	938	936	934	934	934	935	936	936	937	937	937	938	939	939	940	940
175	971	965	960	956	953	951	951	951	952	953	953	954	954	955	955	956	956	957	957
180	976	976	976	976	976	976	976	976	976	976	976	976	976	976	976	976	976	976	976

C Range: 0 - 360DEG  
C Interval: 5.0DEG  
Test Speed: MEDIUM  
Temperature:25.3DEG  
Operators:  
Test Date:2023-06-01

γ Range: 0 - 180DEG  
γ Interval: 0.5DEG  
Test System:EVERFINE GO-2000\_V1 SYSTEM V2.0.406.10  
Humidity:65.0%  
Test Distance:11.700m [K=0.8547]  
Remarks:

## LUMINOUS DISTRIBUTION INTENSITY DATA

Test:U:229.68V I:0.2186A P:48.734W PF:0.9706 Freq:49.99Hz Lamp Flux:4586.96x1 lm																		
NAME:									TYPE:					WEIGHT:				
SPEC.:									DIM.: 984*65*35					SERIAL No.:				
MFR.: A2883174-07									SUR.:0.5*0.055					Shielding Angle:				

Table--2

UNIT: cd

C(DEG) γ (DEG)	95	100	105	110	115	120	125	130	135	140	145	150	155	160	165	170	175	180	185
0	1515	1515	1515	1515	1515	1514	1514	1514	1513	1513	1512	1512	1512	1513	1516	1519	1521	1523	1523
5	1491	1492	1492	1492	1492	1492	1491	1491	1491	1491	1491	1491	1492	1493	1496	1499	1502	1505	1505
10	1435	1435	1435	1435	1434	1433	1431	1430	1428	1427	1427	1427	1427	1429	1431	1434	1437	1439	1440
15	1347	1347	1347	1347	1345	1342	1339	1335	1332	1330	1329	1328	1327	1328	1330	1332	1334	1336	1337
20	1230	1230	1230	1230	1227	1223	1219	1214	1210	1207	1204	1202	1201	1201	1202	1203	1205	1207	1208
25	1097	1098	1098	1097	1094	1089	1083	1077	1072	1067	1064	1061	1059	1058	1059	1060	1062	1064	1066
30	961	961	960	958	952	944	935	926	918	914	910	908	907	906	905	905	906	908	910
35	796	795	793	791	786	780	774	767	760	753	746	740	734	730	726	723	721	721	723
40	604	608	612	615	613	607	599	592	585	583	582	581	581	578	574	570	567	565	569
45	437	447	457	467	472	470	466	460	453	445	436	428	421	419	421	424	428	433	435
50	306	321	337	352	359	357	352	346	339	336	334	332	329	325	320	314	310	307	307
55	211	222	235	246	249	242	234	225	218	226	234	243	249	245	231	216	202	190	198
60	163	173	181	188	182	165	146	130	117	130	146	165	182	189	185	178	171	164	170
65	139	143	145	145	136	117	98.3	81.6	69.6	79.6	94.7	113	131	144	151	156	159	160	163
70	136	129	119	109	100	92.9	86.8	82.2	79.3	80.6	83.8	88.5	94.4	102	111	120	127	133	132
75	102	94.8	87.0	79.5	75.9	76.6	78.5	81.3	84.4	85.6	86.9	88.4	90.1	93.1	97.3	101	105	108	107
80	70.9	70.2	69.4	68.8	69.1	70.4	71.9	73.3	74.5	73.8	72.9	72.2	71.8	73.1	76.1	79.2	82.0	84.0	82.0
85	32.5	34.9	37.2	39.2	39.6	38.3	36.8	35.5	34.6	36.7	39.3	42.1	44.5	45.4	44.6	43.4	42.1	40.9	41.3
90	1.38	1.98	2.63	3.26	3.74	4.03	4.26	4.46	4.65	4.89	5.13	5.37	5.61	5.89	6.19	6.46	6.67	6.80	6.72
95	35.6	31.5	26.5	21.2	17.1	14.3	12.0	10.2	8.69	7.70	7.03	6.61	6.36	6.15	5.94	5.80	5.71	5.68	5.63
100	87.0	84.7	81.1	76.2	69.4	60.8	51.8	43.1	35.1	30.6	27.2	24.8	23.1	21.9	20.9	20.4	20.2	20.2	20.2
105	147	145	142	138	131	123	113	103	93.0	83.6	74.8	66.8	59.9	54.8	51.8	50.0	49.2	49.4	49.6
110	212	211	208	204	199	192	184	175	165	155	144	133	124	116	111	108	105	105	106
115	282	280	278	274	270	263	257	249	240	230	220	211	202	194	189	185	182	181	181
120	353	352	350	347	342	337	331	324	316	308	299	291	283	277	272	268	265	264	264
125	425	424	422	420	416	411	405	399	393	386	379	371	365	359	355	352	349	348	347
130	498	497	496	493	490	486	481	475	469	463	457	452	446	442	439	436	434	432	431
135	573	571	569	566	563	560	557	553	549	543	537	532	527	523	520	519	517	516	515
140	643	641	639	637	634	632	629	626	622	618	613	609	605	602	601	600	600	599	597
145	710	709	707	705	703	701	699	696	693	690	686	683	680	678	677	677	677	676	674
150	771	770	769	768	766	765	763	761	760	757	755	752	750	749	749	749	748	748	745
155	827	826	825	824	823	822	821	820	819	817	816	814	813	812	812	813	813	813	810
160	875	874	874	874	873	872	872	871	870	869	868	868	867	867	868	868	868	868	865
165	912	912	912	912	912	912	912	912	913	912	912	912	911	912	913	913	914	913	910
170	941	941	942	942	942	942	943	943	943	943	944	944	945	945	947	948	948	948	944
175	958	959	959	960	960	961	961	962	962	963	964	964	965	966	968	969	969	969	965
180	976	976	976	976	976	976	976	976	976	976	976	976	976	976	976	976	976	976	976

C Range: 0 - 360DEG  
C Interval: 5.0DEG  
Test Speed: MEDIUM  
Temperature:25.3DEG  
Operators:  
Test Date:2023-06-01

γ Range: 0 - 180DEG  
γ Interval: 0.5DEG  
Test System:EVERFINE GO-2000\_V1 SYSTEM V2.0.406.10  
Humidity:65.0%  
Test Distance:11.700m [K=0.8547]  
Remarks:

## LUMINOUS DISTRIBUTION INTENSITY DATA

Test:U:229.68V I:0.2186A P:48.734W PF:0.9706 Freq:49.99Hz Lamp Flux:4586.96x1 lm																		
NAME:									TYPE:					WEIGHT:				
SPEC.:									DIM.: 984*65*35					SERIAL No.:				
MFR.: A2883174-07									SUR.:0.5*0.055					Shielding Angle:				

Table--3

UNIT: cd

C(DEG) γ (DEG)	190	195	200	205	210	215	220	225	230	235	240	245	250	255	260	265	270	275	280
0	1523	1522	1521	1521	1520	1520	1519	1519	1518	1518	1518	1517	1517	1517	1516	1516	1516	1515	1515
5	1505	1504	1503	1503	1503	1504	1504	1505	1504	1504	1504	1504	1504	1504	1504	1504	1503	1502	1501
10	1440	1440	1440	1441	1443	1445	1447	1449	1450	1451	1451	1452	1453	1454	1455	1455	1455	1454	1452
15	1338	1339	1340	1342	1346	1350	1354	1358	1361	1364	1366	1369	1371	1373	1375	1376	1376	1373	1370
20	1210	1211	1214	1217	1222	1228	1234	1239	1244	1249	1253	1257	1260	1263	1264	1265	1264	1262	1258
25	1067	1070	1073	1078	1084	1091	1098	1105	1111	1117	1122	1126	1130	1132	1134	1134	1133	1130	1126
30	914	919	924	929	935	941	948	954	962	970	977	983	988	991	993	994	993	989	984
35	727	732	739	748	760	772	784	795	802	807	811	815	820	825	830	833	834	829	821
40	575	582	589	595	601	606	611	616	620	623	626	629	631	634	636	637	637	634	630
45	438	441	445	450	456	462	468	473	478	481	484	485	484	481	477	473	469	470	471
50	310	315	321	329	340	352	363	374	382	389	393	393	385	368	351	335	323	330	342
55	209	222	236	244	245	245	245	246	256	266	274	280	275	261	245	229	217	225	236
60	177	183	188	185	175	163	153	146	156	169	183	196	200	196	189	182	175	178	181
65	163	161	157	145	128	110	95.0	84.4	94.7	109	126	143	153	154	153	151	146	145	144
70	130	125	119	112	104	95.7	89.0	84.4	86.4	90.7	96.9	104	114	125	135	143	147	140	130
75	105	103	99.9	96.8	93.9	91.1	88.6	86.6	85.1	84.4	84.8	86.4	91.5	99.7	108	115	120	115	108
80	79.3	76.3	73.5	72.5	73.4	74.6	76.0	77.2	76.1	74.8	73.5	72.4	72.7	74.4	76.2	77.6	78.5	76.3	73.5
85	41.9	42.5	43.0	42.7	41.6	40.3	39.1	38.0	37.9	38.0	38.3	38.8	39.4	40.0	40.6	41.0	41.0	40.1	38.9
90	6.54	6.29	5.97	5.56	5.10	4.61	4.13	3.67	3.36	3.09	2.84	2.60	2.29	1.93	1.58	1.27	1.03	1.00	1.04
95	5.62	5.67	5.79	5.92	6.08	6.40	6.94	7.75	8.90	10.4	12.4	14.8	18.8	24.1	29.1	33.3	36.1	33.4	29.4
100	20.4	20.9	21.7	22.8	24.1	26.1	29.0	32.9	40.5	48.8	57.3	65.6	72.3	77.1	80.8	83.2	84.3	83.9	82.0
105	50.7	52.7	55.7	60.0	65.8	72.5	80.0	88.2	98.2	108	118	127	134	138	141	143	143	144	143
110	108	112	117	123	131	139	149	158	168	177	186	194	200	203	206	208	208	209	208
115	184	187	192	198	206	214	223	232	240	249	256	263	269	272	275	277	277	278	278
120	265	267	271	277	284	292	300	308	316	323	329	335	340	344	347	349	350	350	350
125	348	349	352	356	363	370	377	385	391	397	403	408	413	416	419	421	422	423	422
130	431	431	433	436	441	447	453	460	466	471	476	481	485	489	492	494	495	496	495
135	513	513	513	516	520	525	530	536	541	547	552	557	560	563	565	566	567	569	569
140	596	594	594	595	598	601	605	609	614	619	623	627	631	633	635	637	638	639	640
145	671	669	668	668	670	672	676	679	683	688	692	696	699	701	703	704	705	706	706
150	742	740	737	737	738	740	743	746	749	753	756	760	762	764	765	767	767	769	769
155	806	803	800	799	800	801	803	805	808	811	814	816	818	820	821	822	822	824	825
160	861	858	855	853	853	854	855	857	859	861	863	865	867	868	869	870	871	872	873
165	906	902	898	896	896	897	898	899	901	902	904	906	907	908	909	910	911	912	913
170	939	935	931	929	928	929	930	931	932	933	934	935	935	936	937	938	938	940	941
175	961	956	952	949	949	949	949	950	951	951	952	953	954	954	955	955	956	957	958
180	976	976	976	976	976	976	976	976	976	976	976	976	976	976	976	976	976	976	976

C Range: 0 - 360DEG  
C Interval: 5.0DEG  
Test Speed: MEDIUM  
Temperature:25.3DEG  
Operators:  
Test Date:2023-06-01

γ Range: 0 - 180DEG  
γ Interval: 0.5DEG  
Test System:EVERFINE GO-2000\_V1 SYSTEM V2.0.406.10  
Humidity:65.0%  
Test Distance:11.700m [K=0.8547]  
Remarks:

## LUMINOUS DISTRIBUTION INTENSITY DATA

Test:U:229.68V I:0.2186A P:48.734W PF:0.9706 Freq:49.99Hz Lamp Flux:4586.96x1 lm																	
NAME:									TYPE:						WEIGHT:		
SPEC.:									DIM.: 984*65*35						SERIAL No.:		
MFR.: A2883174-07									SUR.:0.5*0.055						Shielding Angle:		

Table--4

UNIT: cd

C(DEG) γ (DEG)	285	290	295	300	305	310	315	320	325	330	335	340	345	350	355				
0	1515	1515	1515	1514	1514	1514	1513	1513	1512	1512	1512	1513	1515	1517	1520				
5	1500	1499	1498	1497	1497	1496	1495	1493	1491	1489	1488	1488	1489	1491	1493				
10	1450	1447	1445	1443	1440	1438	1435	1432	1428	1425	1422	1420	1420	1421	1423				
15	1367	1362	1358	1354	1349	1345	1340	1334	1329	1323	1319	1316	1314	1314	1315				
20	1253	1248	1242	1237	1230	1224	1217	1210	1202	1195	1189	1185	1182	1181	1182				
25	1121	1115	1108	1101	1093	1085	1077	1068	1059	1051	1044	1039	1036	1034	1035				
30	977	970	961	952	942	933	923	916	908	902	897	893	890	888	888				
35	813	803	796	791	786	780	774	764	753	743	732	723	717	711	707				
40	625	620	614	609	603	598	592	588	583	579	574	569	564	558	553				
45	472	473	473	471	468	464	458	448	436	425	415	410	408	409	413				
50	355	367	372	369	363	354	344	333	322	312	302	296	293	293	295				
55	249	260	263	256	247	238	228	227	227	226	225	221	213	204	192				
60	183	184	176	161	146	132	122	130	142	155	169	177	179	177	173				
65	140	135	123	106	89.4	75.6	66.7	78.8	95.8	115	135	149	156	160	161				
70	117	104	94.0	86.6	80.9	77.2	75.7	79.6	85.2	91.9	99.0	105	109	112	115				
75	99.9	91.2	84.6	80.6	77.5	75.3	74.1	73.6	74.0	75.3	77.5	80.7	84.8	89.9	95.9				
80	70.4	67.3	65.0	63.7	62.8	62.3	62.1	62.1	62.4	62.9	63.5	64.2	64.9	65.8	66.8				
85	37.4	35.8	34.2	32.7	31.3	30.0	29.0	28.7	28.6	28.8	29.0	29.1	29.2	29.2	29.2				
90	1.12	1.22	1.29	1.31	1.34	1.37	1.40	1.47	1.54	1.60	1.65	1.65	1.61	1.54	1.44				
95	24.6	19.4	15.4	12.9	10.9	9.23	7.98	7.18	6.67	6.38	6.25	6.10	5.91	5.77	5.70				
100	78.9	74.5	67.8	59.1	50.1	41.2	33.2	29.2	26.3	24.4	23.2	22.2	21.2	20.6	20.4				
105	141	138	131	122	111	100	89.6	80.9	73.0	65.9	59.9	55.3	52.0	50.0	49.2				
110	207	204	199	191	183	174	164	153	143	133	124	117	111	108	105				
115	276	274	270	264	257	249	240	231	221	212	204	196	191	186	183				
120	348	346	342	338	332	326	319	311	303	295	287	281	276	272	269				
125	421	419	416	412	408	402	397	390	383	377	371	365	361	358	356				
130	495	493	490	487	484	479	475	469	464	458	453	449	446	443	441				
135	570	569	567	564	560	555	551	547	543	539	536	533	530	528	526				
140	640	639	638	635	633	629	626	623	621	618	616	613	611	609	607				
145	707	706	706	704	702	700	697	696	694	692	691	689	688	686	685				
150	770	770	770	769	767	766	764	763	762	761	760	760	759	758	757				
155	826	827	827	826	825	824	823	823	823	822	822	822	822	821	821				
160	874	875	876	875	875	874	874	874	875	875	876	876	876	876	876				
165	914	914	915	915	915	915	915	916	917	917	918	919	919	919	920				
170	942	943	943	944	944	944	944	945	946	947	949	950	950	951	952				
175	959	960	961	961	962	963	963	964	965	966	967	968	968	969	970				
180	976	976	976	976	976	976	976	976	976	976	976	976	976	976	976				

C Range: 0 - 360DEG  
C Interval: 5.0DEG  
Test Speed: MEDIUM  
Temperature:25.3DEG  
Operators:  
Test Date:2023-06-01

γ Range: 0 - 180DEG  
γ Interval: 0.5DEG  
Test System:EVERFINE GO-2000\_V1 SYSTEM V2.0.406.10  
Humidity:65.0%  
Test Distance:11.700m [K=0.8547]  
Remarks: