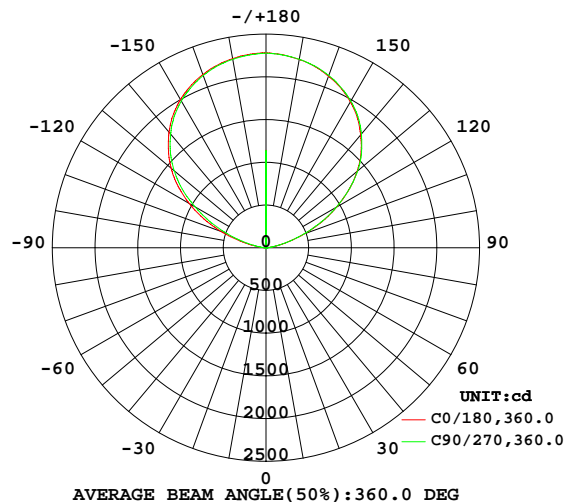


LUMINAIRE PHOTOMETRIC TEST REPORT

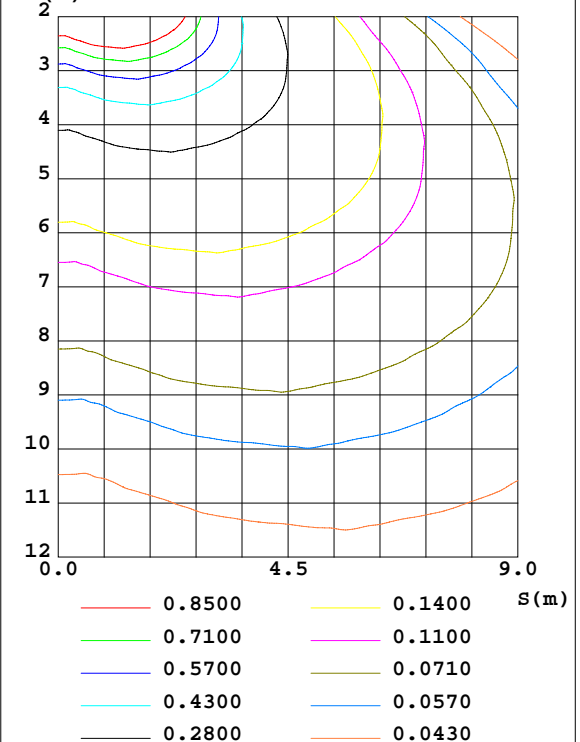
Test:U:229.72V I:0.2048A P:44.076W PF:0.9368 Freq:49.99Hz Lamp Flux:6435.89x1 lm		
NAME:	TYPE:	WEIGHT:
SPEC.:	DIM.: 300*300	SERIAL No.:
MFR.: NLD342026A-01	SUR.:0.3*0.3	Shielding Angle:

DATA OF LAMP		PHOTOMETRIC DATA Eff: 146.02 lm/W			
MODEL		Imax(cd)	2282	S/MH(C0/180)	2.86
NOMINAL POWER(W)	45	LOR(%)	100.0	S/MH(C90/270)	2.93
RATED VOLTAGE(V)	230.0	TOTAL FLUX(lm)	6435.9	η UP,DN(C0-180)	49.3,0.5
NOMINAL FLUX(lm)	6435.89	CIE CLASS	INDIRECT	η UP,DN(C180-360)	49.7,0.5
LAMPS INSIDE	1	η up(%)	99.0	CIBSE SHR NOM	2.00
TEST VOLTAGE(V)	230.0	η down(%)	1.0	CIBSE SHR MAX	2.00

LUMINOUS INTENSITY DISTRIBUTION DIAGRAM



C0 PLANE ISOLUX DIAGRAM (UNIT:lx)



C Range: 0 - 360DEG
C Interval: 5.0DEG
Test Speed: MEDIUM
Temperature:25.3DEG
Operators:
Test Date:2024-11-15

γ Range: 0 - 180DEG
 γ Interval: 0.5DEG
Test System:EVERFINE GO-2000_V1 SYSTEM V2.0.406.10
Humidity:65.0%
Test Distance:11.700m [K=0.8547]
Remarks:

ZONAL FLUX DIAGRAM

ZONAL FLUX DIAGRAM:

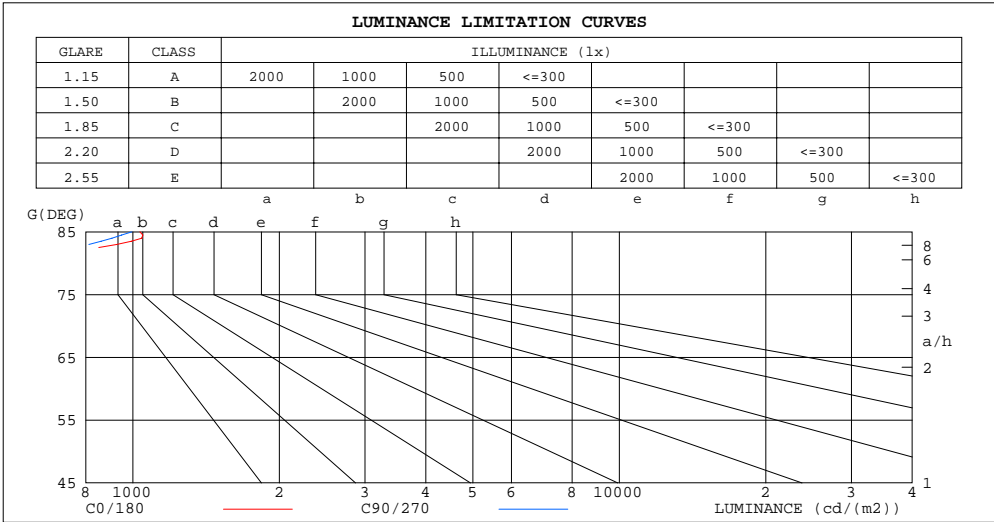
γ	C0	C45	C90	C135	C180	C225	C270	C315	γ	Φ zone	Φ total	%lum, lamp
10	5.341	5.214	4.920	4.775	5.122	5.155	5.267	5.364	0- 10	0.4669	0.4669	0.01,0.01
20	6.699	6.313	5.883	5.704	6.172	6.259	6.404	6.599	10- 20	1.620	2.087	0.03,0.03
30	8.508	7.995	7.447	7.121	7.624	7.786	8.086	8.302	20- 30	3.265	5.352	0.08,0.08
40	10.80	9.855	9.300	8.823	9.624	9.708	10.25	10.46	30- 40	5.545	10.90	0.17,0.17
50	13.53	12.27	11.72	11.04	12.15	12.09	12.76	13.01	40- 50	8.592	19.49	0.30,0.30
60	14.95	13.47	13.05	12.35	13.59	13.38	14.00	14.01	50- 60	11.77	31.26	0.49,0.49
70	13.48	12.23	12.12	11.57	12.60	12.11	12.91	12.76	60- 70	13.08	44.34	0.69,0.69
80	9.966	8.419	8.721	9.241	10.17	9.228	9.631	9.501	70- 80	11.32	55.66	0.86,0.86
90	3.668	2.689	6.392	12.65	3.290	3.222	4.098	7.981	80- 90	8.236	63.89	0.99,0.99
100	109.0	94.84	105.8	132.3	140.3	121.8	112.8	113.6	90-100	46.76	110.7	1.72,1.72
110	479.5	447.7	469.0	532.5	557.2	499.3	483.2	501.8	100-110	311.9	422.6	6.57,6.57
120	954.8	927.8	949.4	1007	1036	971.5	957.2	976.4	110-120	740.3	1163	18.1,18.1
130	1392	1376	1400	1436	1449	1420	1402	1407	120-130	1080	2243	34.8,34.8
140	1724	1719	1737	1759	1766	1753	1737	1729	130-140	1225	3468	53.9,53.9
150	1974	1975	1984	1997	2003	1997	1985	1977	140-150	1173	4641	72.1,72.1
160	2139	2139	2147	2156	2159	2154	2146	2143	150-160	957.1	5598	87,87
170	2239	2237	2240	2246	2248	2247	2239	2240	160-170	622.3	6220	96.7,96.7
180	2281	2281	2281	2281	2281	2281	2281	2281	170-180	215.6	6436	100,100
DEG	LUMINOUS INTENSITY:cd									UNIT:lm		

C Range: 0 - 360DEG
C Interval: 5.0DEG
Test Speed: MEDIUM
Temperature:25.3DEG
Operators:
Test Date:2024-11-15

γ Range: 0 - 180DEG
 γ Interval: 0.5DEG
 γ Test System:EVERFINE GO-2000_V1 SYSTEM V2.0.406.10
Humidity:65.0%
Test Distance:11.700m [K=0.8547]
Remarks:

LUMINANCE LIMITATION CURVES

Test:U:229.72V I:0.2048A P:44.076W PF:0.9368 Freq:49.99Hz Lamp Flux:6435.89x1 lm		
NAME:	TYPE:	WEIGHT:
SPEC.:	DIM.: 300*300	SERIAL No.:
MFR.: NLD342026A-01	SUR.:0.3*0.3	Shielding Angle:



LUMINANCE cd/(m2)		
G (DEG)	C0/180	C90/270
85	1034	996
80	638	558
75	509	458
70	438	394
65	388	342
60	332	290
55	280	246
50	234	203
45	191	165

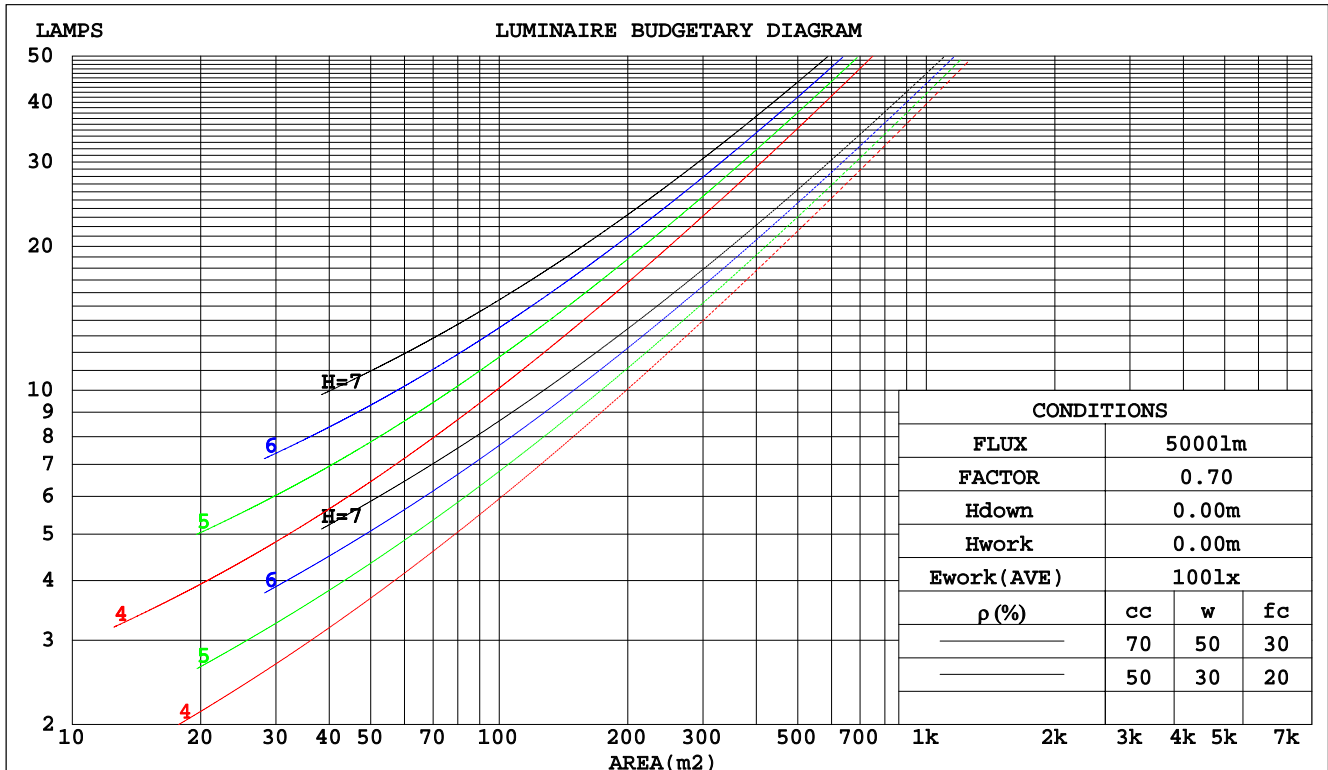
C Range: 0 - 360DEG
C Interval: 5.0DEG
Test Speed: MEDIUM
Temperature:25.3DEG
Operators:
Test Date:2024-11-15

γ Range: 0 - 180DEG
γ Interval: 0.5DEG
Test System:EVERFINE GO-2000_V1 SYSTEM V2.0.406.10
Humidity:65.0%
Test Distance:11.700m [K=0.8547]
Remarks:

CU AND LUMINAIRE BUDGETARY ESTIMATE DIAGRAM

Test:U:229.72V I:0.2048A P:44.076W PF:0.9368 Freq:49.99Hz Lamp Flux:6435.89x1 lm		
NAME:	TYPE:	WEIGHT:
SPEC.:	DIM.: 300*300	SERIAL No.:
MFR.: NLD342026A-01	SUR.:0.3*0.3	Shielding Angle:

pcc	80%			70%			50%			30%			10%			0
pw	50%	30%	10%	50%	30%	10%	50%	30%	10%	50%	30%	10%	50%	30%	10%	0
pfc	20%			20%			20%			20%			20%			0
RCR	RCR:Room Cavity Ratio						Coefficients of Utilization(CU)									
0.0	.95	.95	.95	.82	.82	.82	.56	.56	.56	.33	.33	.33	.11	.11	.11	.01
1.0	.83	.79	.76	.71	.68	.65	.49	.47	.45	.28	.28	.27	.10	.09	.09	.01
2.0	.72	.66	.62	.62	.57	.53	.43	.40	.37	.25	.23	.22	.08	.08	.08	.00
3.0	.63	.56	.51	.54	.49	.44	.37	.34	.31	.22	.20	.19	.07	.07	.06	.00
4.0	.56	.48	.43	.48	.42	.37	.33	.29	.26	.19	.17	.16	.06	.06	.05	.00
5.0	.49	.42	.36	.42	.36	.32	.29	.25	.22	.17	.15	.13	.06	.05	.05	.00
6.0	.44	.36	.31	.38	.32	.27	.26	.22	.19	.15	.13	.12	.05	.04	.04	.00
7.0	.39	.32	.27	.34	.28	.23	.23	.19	.17	.14	.12	.10	.05	.04	.03	.00
8.0	.35	.28	.23	.30	.24	.20	.21	.17	.14	.12	.10	.09	.04	.03	.03	.00
9.0	.32	.25	.20	.28	.22	.18	.19	.15	.13	.11	.09	.08	.04	.03	.03	.00
10.0	.29	.22	.18	.25	.19	.16	.17	.14	.11	.10	.08	.07	.03	.03	.02	.00



C Range: 0 - 360DEG
C Interval: 5.0DEG
Test Speed: MEDIUM
Temperature:25.3DEG
Operators:
Test Date:2024-11-15

γ Range: 0 - 180DEG
γ Interval: 0.5DEG
Test System:EVERFINE GO-2000_V1 SYSTEM V2.0.406.10
Humidity:65.0%
Test Distance:11.700m [K=0.8547]
Remarks:

WEC AND CCEC

Test:U:229.72V I:0.2048A P:44.076W PF:0.9368 Freq:49.99Hz Lamp Flux:6435.89x1 lm									
NAME:				TYPE:				WEIGHT:	
SPEC.:				DIM.: 300*300				SERIAL No.:	
MFR.: NLD342026A-01				SUR.:0.3*0.3				Shielding Angle:	

pcc	80%			70%			50%			30%			10%			0
pw	50%	30%	10%	50%	30%	10%	50%	30%	10%	50%	30%	10%	50%	30%	10%	0
pfc	20%			20%			20%			20%			20%			0
RCR	RCR:Room Cavity Ratio						Wall Exitance Coefficients(WEC)									
0.0																
1.0	.260	.148	.047	.223	.127	.040	.154	.088	.028	.091	.052	.017	.032	.019	.006	
2.0	.238	.131	.040	.205	.113	.035	.141	.079	.024	.083	.047	.015	.029	.017	.005	
3.0	.220	.117	.035	.189	.101	.030	.131	.071	.022	.077	.042	.013	.027	.015	.005	
4.0	.203	.106	.031	.175	.092	.027	.121	.064	.019	.071	.038	.012	.025	.014	.004	
5.0	.189	.096	.028	.163	.083	.024	.113	.059	.017	.066	.035	.010	.023	.012	.004	
6.0	.176	.088	.025	.152	.077	.022	.105	.054	.016	.062	.032	.009	.022	.011	.003	
7.0	.165	.081	.023	.142	.071	.020	.099	.050	.014	.058	.030	.009	.020	.011	.003	
8.0	.154	.075	.021	.133	.065	.019	.093	.046	.013	.055	.028	.008	.019	.010	.003	
9.0	.145	.070	.020	.125	.061	.017	.087	.043	.012	.052	.026	.007	.018	.009	.003	
10.0	.136	.065	.018	.118	.057	.016	.082	.040	.011	.049	.024	.007	.017	.009	.002	

pcc	80%			70%			50%			30%			10%			0
pw	50%	30%	10%	50%	30%	10%	50%	30%	10%	50%	30%	10%	50%	30%	10%	0
pfc	20%			20%			20%			20%			20%			0
RCR	RCR:Room Cavity Ratio						Ceiling Cavity Exitance Coefficients(CCEC)									
0.0	.945	.945	.945	.807	.807	.807	.551	.551	.551	.317	.317	.317	.101	.101	.101	
1.0	.937	.917	.899	.802	.787	.774	.549	.542	.535	.316	.313	.311	.101	.101	.101	
2.0	.931	.898	.870	.797	.773	.752	.546	.535	.525	.315	.311	.308	.101	.101	.100	
3.0	.925	.884	.851	.793	.762	.738	.544	.530	.518	.314	.309	.305	.101	.100	.100	
4.0	.919	.873	.838	.788	.754	.728	.542	.526	.513	.314	.308	.303	.101	.100	.100	
5.0	.913	.865	.829	.784	.748	.721	.540	.523	.509	.313	.307	.302	.101	.100	.100	
6.0	.908	.858	.823	.780	.743	.716	.538	.520	.507	.312	.306	.301	.101	.100	.100	
7.0	.903	.853	.818	.776	.739	.713	.536	.518	.505	.312	.305	.301	.101	.100	.099	
8.0	.898	.848	.814	.773	.736	.710	.535	.517	.504	.311	.305	.300	.101	.100	.099	
9.0	.893	.844	.812	.769	.733	.708	.533	.515	.503	.310	.304	.300	.101	.100	.099	
10.0	.889	.841	.809	.766	.730	.706	.531	.514	.502	.310	.304	.299	.100	.100	.099	

C Range: 0 - 360DEG
 C Interval: 5.0DEG
 Test Speed: MEDIUM
 Temperature:25.3DEG
 Operators:
 Test Date:2024-11-15

γ Range: 0 - 180DEG
 γ Interval: 0.5DEG
 Test System:EVERFINE GO-2000_V1 SYSTEM V2.0.406.10
 Humidity:65.0%
 Test Distance:11.700m [K=0.8547]
 Remarks:

UGR(Unified Glare Rating) Table

Test:U:229.72V I:0.2048A P:44.076W PF:0.9368 Freq:49.99Hz Lamp Flux:6435.89x1 lm											
NAME:					TYPE:			WEIGHT:			
SPEC.:					DIM.: 300*300			SERIAL No.:			
MFR.: NLD342026A-01					SUR.:0.3*0.3			Shielding Angle:			
ceiling/cavity	0.7	0.7	0.5	0.5	0.3	0.7	0.7	0.5	0.5	0.3	
walls	0.5	0.3	0.5	0.3	0.3	0.5	0.3	0.5	0.3	0.3	
working plane	0.2	0.2	0.2	0.2	0.2	0.2	0.2	0.2	0.2	0.2	
Room dimensions		Viewed crosswise				Viewed endwise					
x = 2H y = 2H		-8.1	-7.5	-6.9	-6.3	-4.4	-8.7	-8.1	-7.4	-6.8	-5.0
3H		-5.2	-4.6	-3.9	-3.4	-1.5	-5.7	-5.2	-4.5	-4.0	-2.1
4H		-3.8	-3.2	-2.5	-2.0	-0.2	-4.3	-3.8	-3.1	-2.6	-0.8
6H		-2.5	-2.0	-1.2	-0.8	1.1	-3.2	-2.7	-1.9	-1.4	0.4
8H		-1.7	-1.3	-0.4	-0.0	1.8	-2.4	-2.0	-1.1	-0.7	1.1
12H		-0.8	-0.4	0.5	0.9	2.7	-1.5	-1.1	-0.2	0.2	2.0
4H	2H	-7.4	-6.9	-6.1	-5.6	-3.8	-7.8	-7.2	-6.5	-6.0	-4.2
	3H	-4.3	-3.9	-3.0	-2.7	-0.8	-4.8	-4.4	-3.5	-3.1	-1.3
	4H	-2.9	-2.5	-1.6	-1.2	0.6	-3.3	-3.0	-2.0	-1.7	0.2
	6H	-1.5	-1.1	-0.2	0.1	2.0	-2.1	-1.7	-0.7	-0.5	1.4
	8H	-0.6	-0.3	0.7	1.0	2.9	-1.2	-0.9	0.1	0.4	2.2
	12H	0.5	0.7	1.8	2.0	3.9	-0.2	0.1	1.1	1.3	3.2
8H	4H	-2.5	-2.2	-1.2	-1.0	0.9	-2.9	-2.6	-1.6	-1.4	0.5
	6H	-0.9	-0.7	0.4	0.6	2.5	-1.4	-1.2	-0.1	0.1	2.0
	8H	0.2	0.4	1.5	1.7	3.5	-0.4	-0.2	0.9	1.1	3.0
	12H	1.4	1.6	2.8	2.9	4.8	0.8	1.0	2.2	2.3	4.2
12H	4H	-2.5	-2.2	-1.2	-1.0	0.9	-2.9	-2.6	-1.6	-1.3	0.5
	6H	-0.8	-0.6	0.5	0.7	2.6	-1.2	-1.0	0.1	0.3	2.1
	8H	0.4	0.6	1.7	1.9	3.8	-0.1	0.1	1.2	1.4	3.3
Variations with the observer position at spacings:											
S = 1.0H		+ 0.1 / - 0.1				+ 0.1 / - 0.1					
1.5H		+ 0.2 / - 0.3				+ 0.2 / - 0.3					
2.0H		+ 0.3 / - 0.4				+ 0.3 / - 0.5					

CIE Pub.117, 6436 lm Total Lamp Luminous Flux Corrected ($8\log(F/F_0) = 6.5$)

C Range: 0 - 360DEG
 C Interval: 5.0DEG
 Test Speed: MEDIUM
 Temperature:25.3DEG
 Operators:
 Test Date:2024-11-15

γ Range: 0 - 180DEG
 γ Interval: 0.5DEG
 Test System:EVERFINE GO-2000_V1 SYSTEM V2.0.406.10
 Humidity:65.0%
 Test Distance:11.700m [K=0.8547]
 Remarks:

UTILIZATION FACTORS TABLE

Test:U:229.72V I:0.2048A P:44.076W PF:0.9368 Freq:49.99Hz Lamp Flux:6435.89x1 lm		
NAME:	TYPE:	WEIGHT:
SPEC.:	DIM.: 300*300	SERIAL No.:
MFR.: NLD342026A-01	SUR.:0.3*0.3	Shielding Angle:

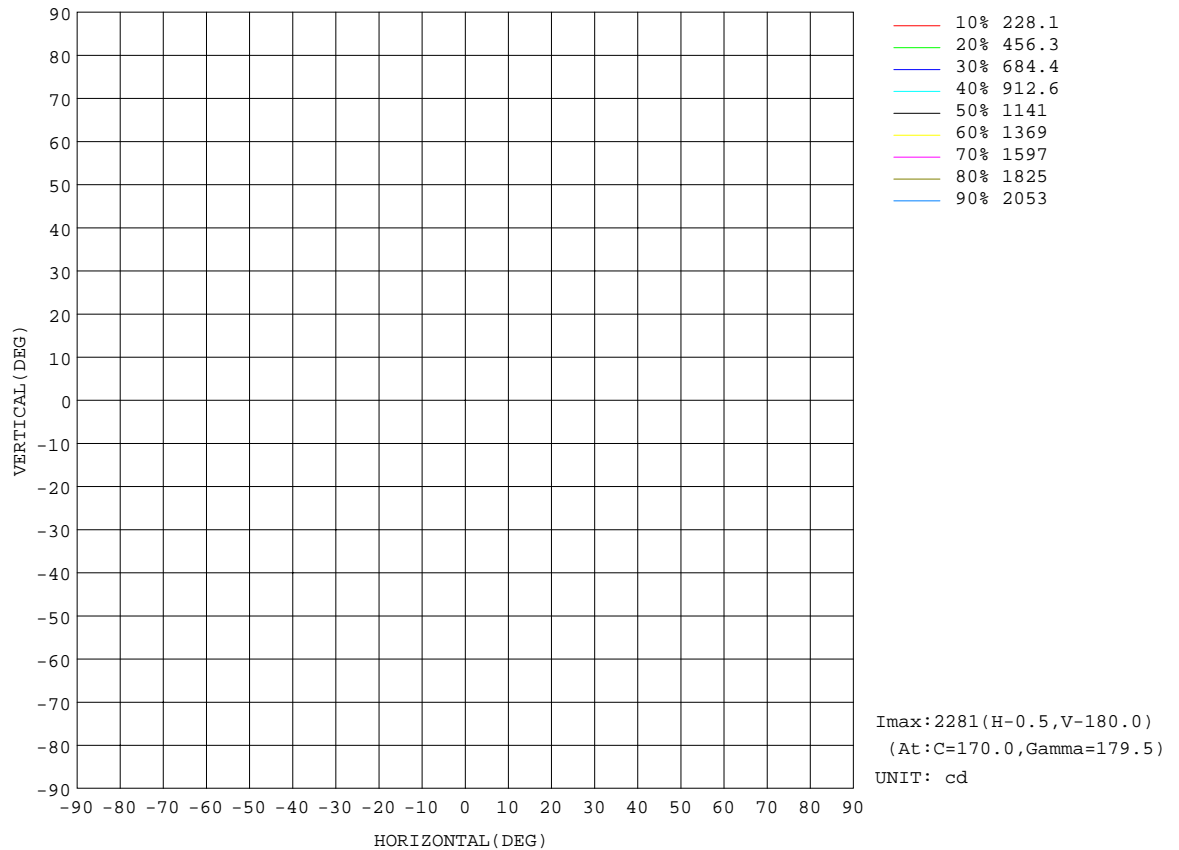
REFLECTANCE										
Ceiling	0.8	0.8	0.8	0.7	0.7	0.7	0.5	0.5	0.5	0
Walls	0.7	0.5	0.3	0.7	0.5	0.3	0.7	0.5	0.3	0
Working plane	0.2	0.2	0.2	0.2	0.2	0.2	0.2	0.2	0.2	0
ROOM INDEX	UTILIZATION FACTORS(PERCENT) $k(RI) \times RCR = 5$									
$k = 0.60$	30	20	15	26	18	13	18	13	9	0
0.80	40	28	21	34	24	19	24	17	13	0
1.00	47	35	28	40	30	24	28	21	17	0
1.25	53	42	34	46	36	30	32	25	21	0
1.50	59	48	40	50	41	35	34	29	25	0
2.00	66	56	49	57	48	42	39	34	30	0
2.50	71	62	55	61	53	48	42	37	33	1
3.00	75	67	60	64	57	52	44	40	36	1
4.00	79	73	67	68	62	58	46	43	40	1
5.00	82	77	71	70	66	62	48	45	43	1
ROOM INDEX	UF(total)									Direct
According to DIN EN 13032-2 2004			Suspended					SHRNOM = 1.25		

C Range: 0 - 360DEG
C Interval: 5.0DEG
Test Speed: MEDIUM
Temperature:25.3DEG
Operators:
Test Date:2024-11-15

γ Range: 0 - 180DEG
 γ Interval: 0.5DEG
Test System:EVERFINE GO-2000_V1 SYSTEM V2.0.406.10
Humidity:65.0%
Test Distance:11.700m [K=0.8547]
Remarks:

ISOCANDELA DIAGRAM

Test:U:229.72V I:0.2048A P:44.076W PF:0.9368 Freq:49.99Hz Lamp Flux:6435.89x1 lm		
NAME:	TYPE:	WEIGHT:
SPEC.:	DIM.: 300*300	SERIAL No.:
MFR.: NLD342026A-01	SUR.:0.3*0.3	Shielding Angle:

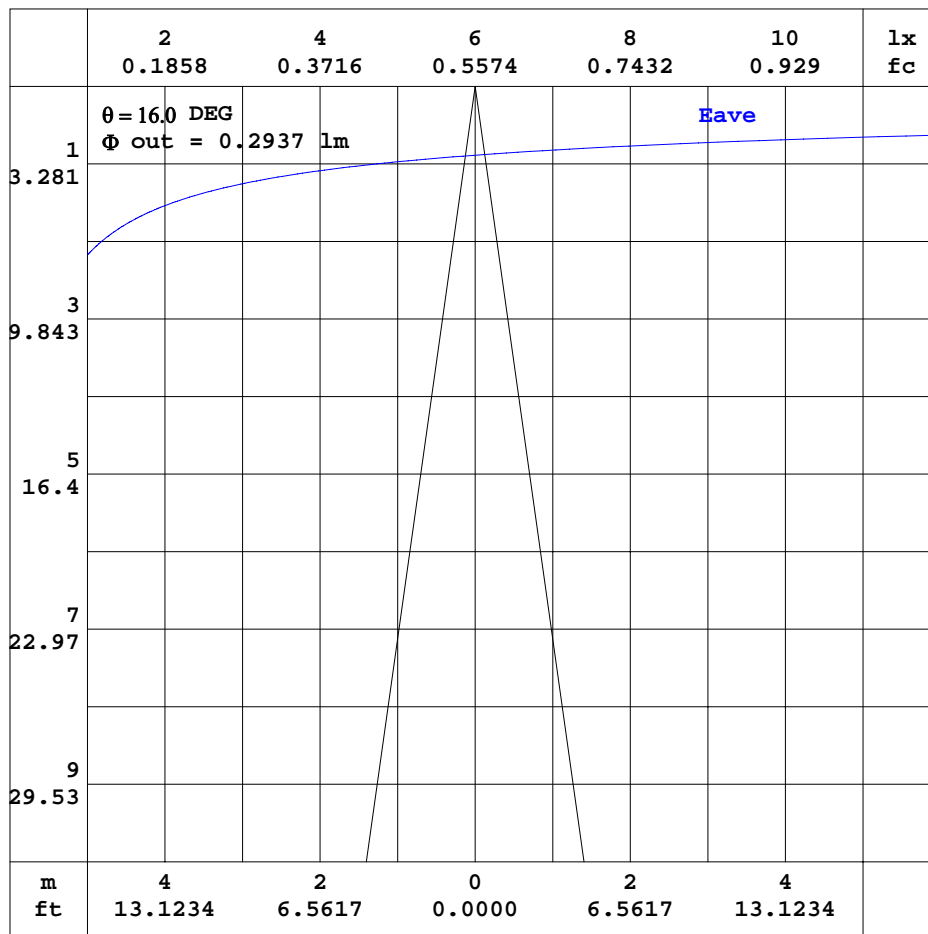


C Range: 0 - 360DEG
C Interval: 5.0DEG
Test Speed: MEDIUM
Temperature: 25.3DEG
Operators:
Test Date: 2024-11-15

γ Range: 0 - 180DEG
 γ Interval: 0.5DEG
Test System: EVERFINE GO-2000_V1 SYSTEM V2.0.406.10
Humidity: 65.0%
Test Distance: 11.700m [K=0.8547]
Remarks:

AAI CURVES

Test:U:229.72V I:0.2048A P:44.076W PF:0.9368 Freq:49.99Hz Lamp Flux:6435.89x1 lm		
NAME:	TYPE:	WEIGHT:
SPEC.:	DIM.: 300*300	SERIAL No.:
MFR.: NLD342026A-01	SUR.:0.3*0.3	Shielding Angle:



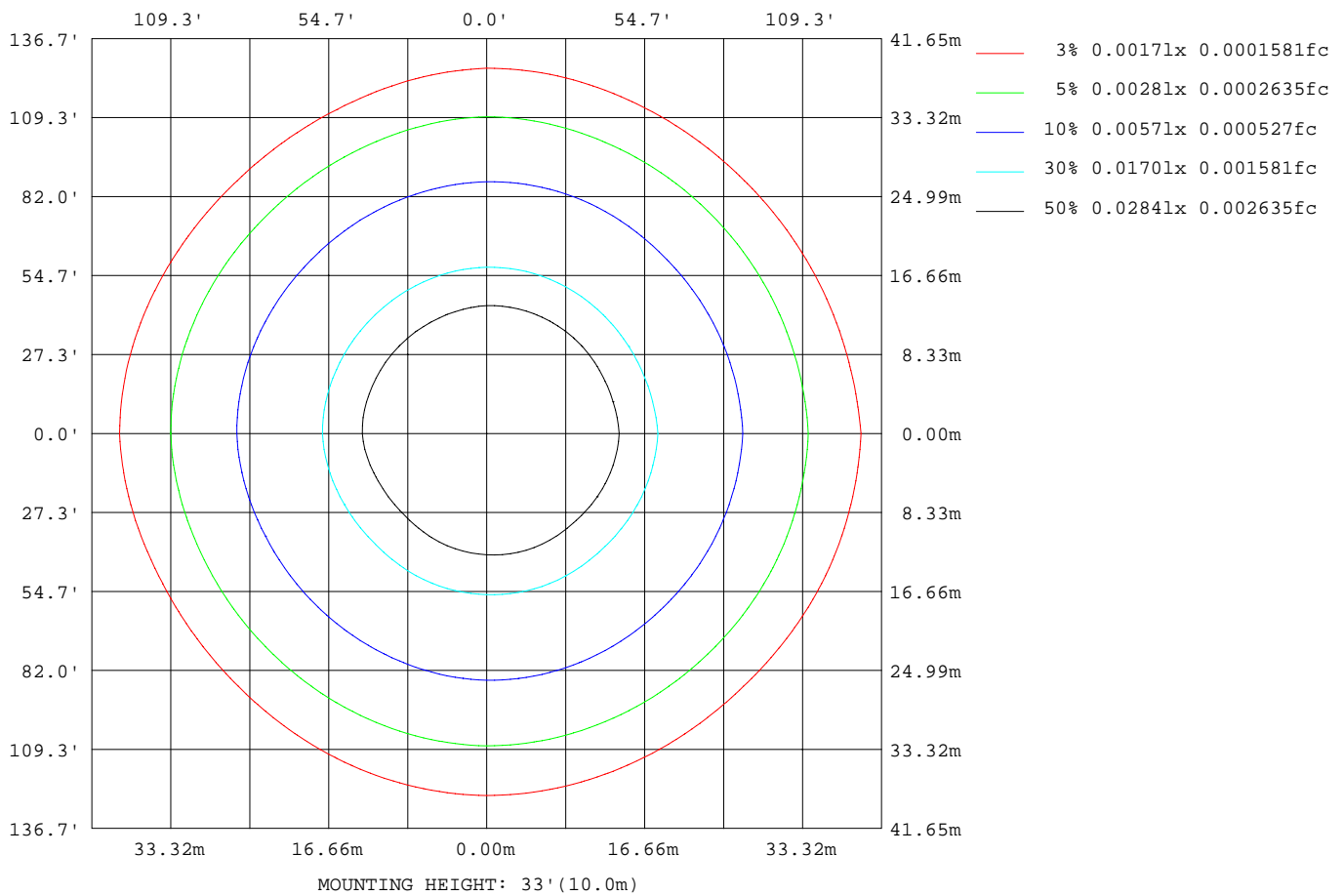
Note:The Curves indicate the illuminated area and the average illuminance when the luminaire is at different distance.

C Range: 0 - 360DEG
C Interval: 5.0DEG
Test Speed: MEDIUM
Temperature:25.3DEG
Operators:
Test Date:2024-11-15

γ Range: 0 - 180DEG
γ Interval: 0.5DEG
Test System:EVERFINE GO-2000_V1 SYSTEM V2.0.406.10
Humidity:65.0%
Test Distance:11.700m [K=0.8547]
Remarks:

ISOLUX DIAGRAM

Test:U:229.72V I:0.2048A P:44.076W PF:0.9368 Freq:49.99Hz Lamp Flux:6435.89x1 lm		
NAME:	TYPE:	WEIGHT:
SPEC.:	DIM.: 300*300	SERIAL No.:
MFR.: NLD342026A-01	SUR.:0.3*0.3	Shielding Angle:



C Range: 0 - 360DEG
C Interval: 5.0DEG
Test Speed: MEDIUM
Temperature: 25.3DEG
Operators:
Test Date: 2024-11-15

γ Range: 0 - 180DEG
γ Interval: 0.5DEG
Test System: EVERFINE GO-2000_V1 SYSTEM V2.0.406.10
Humidity: 65.0%
Test Distance: 11.700m [K=0.8547]
Remarks:

LED Avg.L Report

Test:U:229.72V I:0.2048A P:44.076W PF:0.9368 Freq:49.99Hz Lamp Flux:6435.89x1 lm		
NAME:	TYPE:	WEIGHT:
SPEC.:	DIM.: 300*300	SERIAL No.:
MFR.: NLD342026A-01	SUR.:0.3*0.3	Shielding Angle:

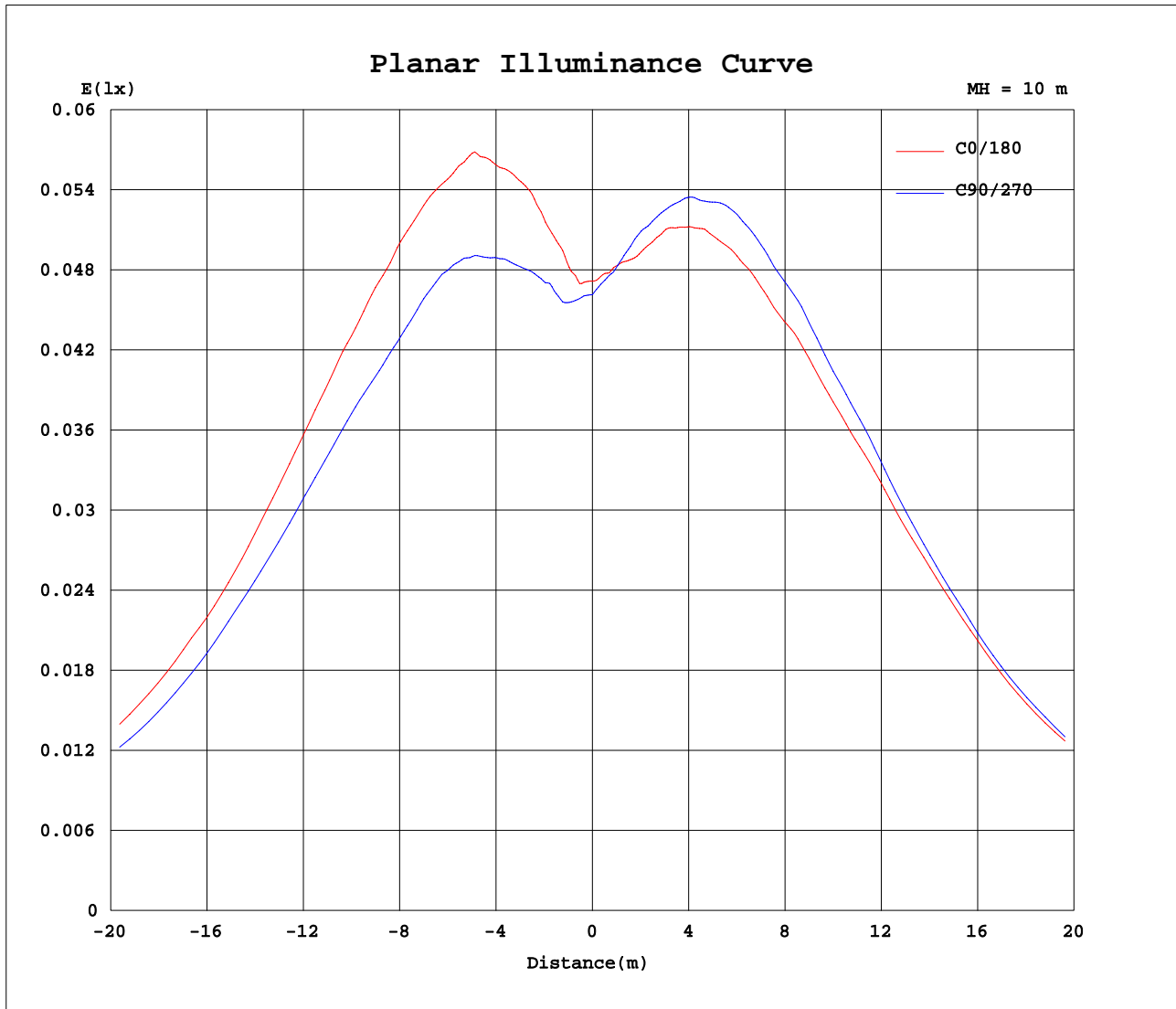
AvgL	cd/m2
L_0~180(65)av	370
L_0~180(75)av	494
L_0~180(85)av	949
L_90~270(65)av	352
L_90~270(75)av	465
L_90~270(85)av	903
L_45(65)av	343
L_45(75)av	438
L_45(85)av	846

Standard: GB/T 29293-2012

C Range: 0 - 360DEG
C Interval: 5.0DEG
Test Speed: MEDIUM
Temperature:25.3DEG
Operators:
Test Date:2024-11-15

γ Range: 0 - 180DEG
γ Interval: 0.5DEG
Test System:EVERFINE GO-2000_V1 SYSTEM V2.0.406.10
Humidity:65.0%
Test Distance:11.700m [K=0.8547]
Remarks:

Planar Illuminance Curve



C Range: 0 - 360DEG
C Interval: 5.0DEG
Test Speed: MEDIUM
Temperature: 25.3DEG
Operators:
Test Date: 2024-11-15

γ Range: 0 - 180DEG
 γ Interval: 0.5DEG
Test System: EVERFINE GO-2000_V1 SYSTEM V2.0.406.10
Humidity: 65.0%
Test Distance: 11.700m [K=0.8547]
Remarks:

LUMINOUS DISTRIBUTION INTENSITY DATA

Test:U:229.72V I:0.2048A P:44.076W PF:0.9368 Freq:49.99Hz Lamp Flux:6435.89x1 lm																	
NAME:									TYPE:						WEIGHT:		
SPEC.:									DIM.: 300*300						SERIAL No.:		
MFR.: NLD342026A-01									SUR.:0.3*0.3						Shielding Angle:		

Table--1

UNIT: cd

C(DEC)	C(DEC)																		
γ (DEG)	0	5	10	15	20	25	30	35	40	45	50	55	60	65	70	75	80	85	90
0	4.72	4.72	4.72	4.72	4.72	4.71	4.71	4.71	4.70	4.69	4.68	4.67	4.66	4.65	4.64	4.64	4.63	4.62	4.61
5	4.84	4.87	4.88	4.89	4.89	4.88	4.85	4.82	4.79	4.77	4.77	4.77	4.77	4.77	4.75	4.72	4.68	4.64	4.61
10	5.34	5.36	5.37	5.37	5.36	5.34	5.31	5.28	5.25	5.21	5.20	5.18	5.17	5.15	5.11	5.06	5.01	4.96	4.92
15	6.00	6.02	6.02	6.01	6.00	5.96	5.91	5.86	5.80	5.75	5.72	5.69	5.66	5.63	5.58	5.51	5.45	5.38	5.33
20	6.70	6.71	6.71	6.69	6.66	6.61	6.54	6.46	6.39	6.31	6.28	6.25	6.23	6.20	6.15	6.08	6.01	5.94	5.88
25	7.59	7.58	7.55	7.52	7.48	7.42	7.34	7.27	7.19	7.11	7.06	7.02	6.98	6.93	6.87	6.80	6.72	6.65	6.58
30	8.51	8.52	8.52	8.49	8.46	8.39	8.30	8.20	8.10	8.00	7.93	7.86	7.81	7.75	7.69	7.63	7.56	7.50	7.45
35	9.61	9.55	9.48	9.41	9.33	9.24	9.14	9.05	8.95	8.86	8.80	8.74	8.69	8.64	8.58	8.52	8.46	8.40	8.34
40	10.8	10.7	10.7	10.6	10.5	10.4	10.2	10.1	9.98	9.86	9.78	9.72	9.66	9.61	9.55	9.49	9.42	9.36	9.30
45	12.2	12.1	12.0	11.8	11.7	11.6	11.4	11.3	11.2	11.1	11.0	11.0	10.9	10.9	10.8	10.7	10.7	10.6	10.5
50	13.5	13.4	13.3	13.2	13.0	12.9	12.7	12.6	12.4	12.3	12.2	12.1	12.1	12.0	12.0	11.9	11.9	11.8	11.7
55	14.5	14.3	14.2	14.1	14.0	13.8	13.6	13.4	13.3	13.1	13.1	13.1	13.0	13.0	13.0	12.9	12.8	12.8	12.7
60	14.9	14.8	14.6	14.4	14.2	14.1	13.9	13.7	13.6	13.5	13.4	13.4	13.4	13.3	13.3	13.3	13.2	13.1	13.0
65	14.7	14.6	14.4	14.2	14.1	13.9	13.7	13.6	13.4	13.3	13.3	13.2	13.2	13.1	13.1	13.1	13.1	13.0	13.0
70	13.5	13.3	13.2	13.0	12.9	12.7	12.6	12.4	12.3	12.2	12.2	12.2	12.1	12.1	12.1	12.1	12.1	12.1	12.1
75	11.8	11.7	11.6	11.4	11.3	11.1	10.9	10.8	10.6	10.5	10.5	10.4	10.5	10.5	10.5	10.6	10.6	10.7	10.7
80	9.97	9.83	9.69	9.53	9.37	9.18	8.97	8.77	8.58	8.42	8.34	8.30	8.29	8.31	8.35	8.43	8.52	8.62	8.72
85	8.11	8.36	8.51	8.54	8.46	8.18	7.71	7.22	6.77	6.41	6.53	6.76	7.05	7.37	7.56	7.62	7.67	7.72	7.81
90	3.67	3.87	3.99	4.04	4.01	3.84	3.55	3.24	2.94	2.69	2.61	2.62	2.75	2.99	3.39	3.95	4.64	5.46	6.39
95	27.5	27.5	27.5	27.4	27.4	27.2	26.9	26.7	26.5	26.5	27.0	27.7	28.3	29.0	29.4	29.6	29.7	29.8	30.0
100	109	109	109	108	107	105	101	98.5	96.2	94.8	97.9	102	106	110	111	110	108	107	106
105	269	270	270	269	267	262	255	248	243	240	247	256	265	273	275	271	265	260	257
110	479	483	485	485	484	478	469	459	452	448	458	471	485	497	500	492	484	475	469
115	722	725	726	725	723	717	707	698	691	687	699	713	727	740	743	735	726	717	711
120	955	958	960	960	958	953	945	937	931	928	938	950	962	974	976	970	962	955	949
125	1184	1184	1184	1183	1181	1177	1172	1167	1164	1162	1170	1179	1189	1198	1201	1197	1192	1187	1184
130	1392	1392	1392	1391	1389	1387	1383	1379	1377	1376	1382	1390	1397	1405	1407	1406	1403	1401	1400
135	1573	1572	1570	1569	1568	1567	1565	1564	1564	1564	1567	1571	1575	1579	1581	1581	1581	1581	1581
140	1724	1723	1722	1721	1721	1720	1719	1719	1719	1719	1722	1725	1728	1731	1733	1734	1735	1736	1737
145	1862	1861	1860	1859	1859	1859	1859	1860	1860	1861	1863	1864	1866	1867	1869	1870	1872	1873	1875
150	1974	1972	1971	1970	1970	1970	1971	1973	1974	1975	1976	1977	1977	1978	1979	1980	1982	1983	1984
155	2067	2065	2064	2063	2063	2063	2064	2065	2066	2067	2067	2067	2067	2068	2068	2069	2070	2072	2073
160	2139	2138	2138	2138	2138	2138	2138	2139	2139	2139	2140	2140	2141	2142	2143	2144	2145	2146	2147
165	2198	2197	2196	2195	2194	2194	2195	2195	2196	2197	2197	2198	2198	2198	2199	2200	2201	2202	2203
170	2239	2237	2236	2235	2234	2234	2235	2235	2236	2237	2237	2238	2238	2238	2239	2239	2239	2240	2240
175	2267	2265	2264	2263	2262	2262	2263	2263	2264	2264	2264	2264	2264	2264	2264	2264	2264	2264	2265
180	2281	2281	2281	2281	2281	2281	2281	2281	2281	2281	2281	2281	2281	2281	2281	2281	2281	2281	2281

C Range: 0 - 360DEG
C Interval: 5.0DEG
Test Speed: MEDIUM
Temperature:25.3DEG
Operators:
Test Date:2024-11-15

γ Range: 0 - 180DEG
γ Interval: 0.5DEG
Test System:EVERFINE GO-2000_V1 SYSTEM V2.0.406.10
Humidity:65.0%
Test Distance:11.700m [K=0.8547]
Remarks:

LUMINOUS DISTRIBUTION INTENSITY DATA

Test:U:229.72V I:0.2048A P:44.076W PF:0.9368 Freq:49.99Hz Lamp Flux:6435.89x1 lm		
NAME:	TYPE:	WEIGHT:
SPEC.:	DIM.: 300*300	SERIAL No.:
MFR.: NLD342026A-01	SUR.:0.3*0.3	Shielding Angle:

Table--2

UNIT: cd

C(DEG) γ (DEG)	95	100	105	110	115	120	125	130	135	140	145	150	155	160	165	170	175	180	185
0	4.61	4.60	4.59	4.59	4.59	4.59	4.59	4.60	4.60	4.58	4.57	4.56	4.55	4.57	4.60	4.64	4.68	4.72	4.73
5	4.61	4.62	4.63	4.64	4.64	4.63	4.62	4.61	4.61	4.61	4.62	4.63	4.65	4.69	4.74	4.79	4.84	4.87	4.86
10	4.91	4.90	4.90	4.90	4.88	4.85	4.82	4.79	4.77	4.78	4.79	4.82	4.85	4.90	4.96	5.02	5.08	5.12	5.12
15	5.30	5.29	5.28	5.28	5.27	5.25	5.23	5.21	5.20	5.21	5.23	5.26	5.30	5.35	5.41	5.48	5.54	5.60	5.61
20	5.86	5.84	5.82	5.81	5.80	5.77	5.74	5.72	5.70	5.71	5.72	5.74	5.78	5.84	5.92	6.01	6.10	6.17	6.19
25	6.56	6.54	6.52	6.51	6.49	6.45	6.42	6.39	6.37	6.37	6.38	6.40	6.44	6.50	6.59	6.69	6.78	6.86	6.87
30	7.41	7.38	7.35	7.32	7.28	7.23	7.19	7.15	7.12	7.12	7.14	7.17	7.21	7.28	7.37	7.46	7.55	7.62	7.64
35	8.30	8.26	8.22	8.18	8.13	8.06	8.00	7.94	7.90	7.90	7.92	7.96	8.01	8.09	8.20	8.31	8.41	8.50	8.53
40	9.25	9.20	9.15	9.10	9.04	8.97	8.91	8.86	8.82	8.83	8.86	8.92	8.99	9.10	9.24	9.38	9.51	9.62	9.64
45	10.5	10.4	10.3	10.3	10.2	10.1	10.00	9.93	9.89	9.89	9.92	9.98	10.1	10.2	10.3	10.5	10.6	10.8	10.8
50	11.6	11.6	11.5	11.4	11.3	11.2	11.1	11.1	11.0	11.1	11.1	11.2	11.3	11.5	11.7	11.8	12.0	12.2	12.2
55	12.6	12.5	12.5	12.4	12.3	12.2	12.1	12.0	12.0	12.0	12.1	12.2	12.3	12.5	12.7	12.9	13.1	13.2	13.2
60	13.0	12.9	12.8	12.7	12.6	12.5	12.4	12.4	12.3	12.4	12.5	12.6	12.7	12.9	13.1	13.3	13.5	13.6	13.6
65	12.9	12.8	12.7	12.5	12.4	12.4	12.3	12.2	12.2	12.2	12.3	12.3	12.4	12.6	12.8	13.1	13.3	13.4	13.5
70	12.0	12.0	11.9	11.8	11.7	11.6	11.6	11.6	11.6	11.6	11.7	11.7	11.8	12.0	12.1	12.3	12.5	12.6	12.6
75	10.6	10.5	10.4	10.3	10.2	10.1	10.00	9.92	9.86	9.88	9.93	10.0	10.1	10.3	10.6	10.8	11.0	11.2	11.1
80	8.82	8.91	8.99	9.07	9.13	9.17	9.20	9.22	9.24	9.25	9.26	9.29	9.35	9.47	9.67	9.87	10.0	10.2	10.1
85	8.16	8.51	8.82	9.04	8.98	8.64	8.22	7.76	7.31	7.10	6.95	6.84	6.77	6.73	6.72	6.73	6.75	6.78	6.85
90	7.67	8.99	10.3	11.4	12.3	12.9	13.1	13.1	12.6	11.2	9.47	7.66	5.90	4.65	3.97	3.54	3.32	3.29	3.54
95	30.7	31.5	32.4	33.2	33.9	34.5	35.0	35.5	35.9	36.3	36.7	37.0	37.3	37.6	37.9	38.1	38.3	38.4	38.3
100	109	113	118	123	126	128	130	131	132	133	134	135	136	137	138	139	140	140	141
105	264	274	284	294	301	304	306	307	308	311	314	317	320	321	322	323	323	323	325
110	477	488	500	513	521	525	528	530	533	538	543	548	552	555	556	557	557	557	560
115	719	731	744	757	767	771	774	777	779	783	787	791	795	797	799	800	801	802	805
120	956	966	976	987	995	998	1002	1004	1007	1011	1016	1021	1025	1029	1032	1034	1035	1036	1039
125	1190	1198	1207	1216	1222	1226	1228	1230	1232	1236	1239	1242	1246	1248	1251	1253	1254	1255	1257
130	1404	1410	1416	1422	1427	1430	1432	1434	1436	1437	1438	1439	1440	1442	1444	1446	1448	1449	1450
135	1584	1588	1592	1596	1600	1602	1605	1606	1608	1609	1610	1610	1611	1611	1612	1613	1614	1615	1615
140	1739	1741	1744	1746	1749	1752	1755	1757	1759	1760	1761	1761	1762	1762	1764	1765	1766	1766	1766
145	1876	1877	1879	1880	1882	1884	1887	1889	1891	1892	1892	1893	1893	1894	1894	1895	1895	1896	1895
150	1985	1986	1988	1989	1990	1992	1994	1995	1997	1998	1998	1999	1999	2000	2001	2002	2003	2003	2003
155	2074	2075	2076	2077	2079	2080	2082	2083	2085	2085	2086	2086	2086	2087	2088	2089	2090	2090	2090
160	2148	2149	2149	2150	2151	2152	2153	2155	2156	2156	2156	2157	2157	2157	2158	2158	2159	2159	2159
165	2203	2204	2204	2205	2206	2207	2207	2208	2209	2210	2210	2211	2211	2211	2212	2212	2211	2211	2211
170	2241	2242	2242	2243	2244	2245	2245	2246	2246	2246	2246	2246	2246	2246	2246	2247	2248	2248	2248
175	2266	2267	2267	2268	2269	2269	2269	2270	2270	2270	2271	2271	2271	2272	2272	2272	2272	2272	2271
180	2281	2281	2281	2281	2281	2281	2281	2281	2281	2281	2281	2281	2281	2281	2281	2281	2281	2281	2281

C Range: 0 - 360DEG
C Interval: 5.0DEG
Test Speed: MEDIUM
Temperature:25.3DEG
Operators:
Test Date:2024-11-15

γ Range: 0 - 180DEG
γ Interval: 0.5DEG
Test System:EVERFINE GO-2000_V1 SYSTEM V2.0.406.10
Humidity:65.0%
Test Distance:11.700m [K=0.8547]
Remarks:

LUMINOUS DISTRIBUTION INTENSITY DATA

Test:U:229.72V I:0.2048A P:44.076W PF:0.9368 Freq:49.99Hz Lamp Flux:6435.89x1 lm																		
NAME:									TYPE:					WEIGHT:				
SPEC.:									DIM.: 300*300					SERIAL No.:				
MFR.: NLD342026A-01									SUR.:0.3*0.3					Shielding Angle:				

Table--3

UNIT: cd

C(DEC)	190	195	200	205	210	215	220	225	230	235	240	245	250	255	260	265	270	275	280
γ (DEC)	0	4.73	4.73	4.72	4.71	4.71	4.71	4.70	4.69	4.68	4.67	4.66	4.65	4.64	4.64	4.63	4.62	4.61	4.61
5	4.84	4.81	4.79	4.78	4.80	4.82	4.84	4.85	4.83	4.81	4.78	4.76	4.76	4.77	4.80	4.82	4.84	4.83	4.82
10	5.10	5.09	5.07	5.07	5.09	5.11	5.13	5.15	5.15	5.14	5.14	5.14	5.15	5.18	5.21	5.24	5.27	5.27	5.26
15	5.61	5.61	5.60	5.61	5.63	5.65	5.67	5.68	5.68	5.67	5.66	5.65	5.66	5.68	5.71	5.74	5.77	5.77	5.77
20	6.20	6.19	6.19	6.19	6.21	6.22	6.24	6.26	6.26	6.26	6.27	6.27	6.29	6.32	6.35	6.38	6.40	6.42	6.42
25	6.87	6.86	6.84	6.84	6.86	6.88	6.91	6.93	6.94	6.95	6.97	6.98	7.01	7.04	7.07	7.11	7.14	7.15	7.17
30	7.65	7.65	7.65	7.66	7.69	7.72	7.75	7.79	7.80	7.82	7.84	7.86	7.90	7.95	8.00	8.04	8.09	8.10	8.10
35	8.54	8.54	8.54	8.55	8.57	8.59	8.62	8.65	8.68	8.71	8.75	8.80	8.85	8.91	8.97	9.03	9.08	9.10	9.11
40	9.64	9.62	9.60	9.59	9.61	9.64	9.67	9.71	9.74	9.79	9.83	9.88	9.95	10.0	10.1	10.2	10.3	10.3	10.3
45	10.9	10.9	10.9	10.9	10.9	10.9	10.9	10.9	10.9	11.0	11.0	11.1	11.1	11.2	11.3	11.4	11.4	11.5	11.5
50	12.2	12.1	12.1	12.0	12.0	12.1	12.1	12.1	12.1	12.1	12.2	12.2	12.3	12.4	12.5	12.7	12.8	12.8	12.8
55	13.2	13.1	13.1	13.0	13.0	13.0	12.9	12.9	13.0	13.0	13.1	13.1	13.2	13.4	13.5	13.6	13.7	13.7	13.7
60	13.6	13.5	13.5	13.4	13.4	13.4	13.4	13.4	13.4	13.5	13.5	13.6	13.7	13.8	13.9	13.9	14.0	14.0	14.0
65	13.4	13.4	13.3	13.2	13.1	13.0	13.0	13.0	13.0	13.1	13.2	13.3	13.4	13.5	13.6	13.7	13.7	13.8	13.7
70	12.6	12.5	12.4	12.3	12.3	12.2	12.1	12.1	12.1	12.2	12.2	12.3	12.4	12.6	12.7	12.8	12.9	12.9	13.0
75	11.0	10.8	10.7	10.5	10.3	10.2	10.0	9.94	9.93	9.95	10.0	10.1	10.3	10.5	10.7	10.9	11.0	11.0	10.9
80	9.98	9.82	9.66	9.52	9.42	9.33	9.27	9.23	9.23	9.26	9.30	9.35	9.41	9.48	9.54	9.59	9.63	9.61	9.58
85	6.91	6.93	6.90	6.71	6.36	5.99	5.63	5.31	5.22	5.20	5.24	5.34	5.48	5.65	5.85	6.09	6.36	6.73	7.09
90	3.88	4.25	4.57	4.59	4.30	3.94	3.56	3.22	3.17	3.19	3.26	3.38	3.41	3.39	3.47	3.68	4.10	5.35	6.71
95	38.2	38.0	37.6	37.1	36.3	35.5	34.8	34.3	34.9	35.6	36.3	36.8	36.5	35.3	34.0	32.6	31.4	31.2	31.1
100	142	141	141	138	133	129	125	122	125	129	134	137	136	131	125	118	113	113	115
105	327	328	327	322	312	301	292	285	291	299	308	315	314	304	292	280	270	272	277
110	563	564	562	554	539	524	510	499	507	518	530	540	538	525	510	495	483	488	496
115	808	809	808	798	781	764	748	736	745	757	769	780	779	765	750	735	722	728	738
120	1040	1039	1036	1027	1011	996	982	971	980	991	1003	1014	1012	999	984	969	957	963	972
125	1258	1258	1257	1250	1240	1230	1220	1214	1220	1228	1237	1244	1242	1230	1218	1206	1196	1200	1208
130	1449	1448	1446	1442	1436	1430	1424	1420	1424	1430	1435	1439	1436	1428	1418	1409	1402	1405	1409
135	1614	1613	1612	1609	1606	1603	1600	1598	1600	1603	1606	1608	1606	1600	1594	1587	1582	1583	1585
140	1765	1763	1762	1760	1758	1756	1755	1753	1754	1755	1756	1756	1754	1750	1745	1741	1737	1736	1737
145	1894	1894	1893	1892	1891	1890	1889	1889	1889	1889	1889	1889	1888	1887	1884	1880	1877	1875	1875
150	2002	2001	2001	2000	1999	1999	1998	1997	1997	1996	1995	1994	1993	1991	1988	1986	1985	1984	1984
155	2089	2088	2087	2086	2084	2083	2082	2081	2082	2083	2084	2084	2083	2081	2078	2076	2073	2073	2073
160	2158	2158	2157	2156	2156	2155	2154	2154	2154	2154	2153	2153	2152	2151	2149	2148	2146	2146	2146
165	2210	2209	2209	2208	2209	2209	2210	2210	2209	2209	2208	2207	2206	2205	2204	2204	2203	2203	2203
170	2247	2247	2246	2246	2246	2246	2247	2247	2246	2245	2245	2244	2243	2242	2241	2240	2239	2240	2240
175	2270	2269	2269	2269	2269	2269	2270	2270	2270	2269	2268	2267	2266	2266	2265	2265	2265	2265	2266
180	2281	2281	2281	2281	2281	2281	2281	2281	2281	2281	2281	2281	2281	2281	2281	2281	2281	2281	2281

C Range: 0 - 360DEG
C Interval: 5.0DEG
Test Speed: MEDIUM
Temperature:25.3DEG
Operators:
Test Date:2024-11-15

γ Range: 0 - 180DEG
γ Interval: 0.5DEG
Test System:EVERFINE GO-2000_V1 SYSTEM V2.0.406.10
Humidity:65.0%
Test Distance:11.700m [K=0.8547]
Remarks:

LUMINOUS DISTRIBUTION INTENSITY DATA

Test:U:229.72V I:0.2048A P:44.076W PF:0.9368 Freq:49.99Hz Lamp Flux:6435.89x1 lm																	
NAME:									TYPE:						WEIGHT:		
SPEC.:									DIM.: 300*300						SERIAL No.:		
MFR.: NLD342026A-01									SUR.:0.3*0.3						Shielding Angle:		

Table--4

UNIT: cd

C(DEC) γ (DEC)	285	290	295	300	305	310	315	320	325	330	335	340	345	350	355				
0	4.59	4.59	4.59	4.59	4.59	4.60	4.60	4.58	4.57	4.56	4.55	4.56	4.58	4.62	4.66				
5	4.81	4.80	4.80	4.82	4.84	4.85	4.86	4.83	4.80	4.76	4.73	4.72	4.73	4.76	4.79				
10	5.25	5.25	5.26	5.29	5.32	5.35	5.36	5.34	5.32	5.29	5.26	5.25	5.26	5.27	5.30				
15	5.76	5.77	5.79	5.83	5.87	5.91	5.94	5.93	5.92	5.91	5.89	5.89	5.91	5.93	5.96				
20	6.43	6.44	6.47	6.51	6.54	6.57	6.60	6.58	6.56	6.54	6.52	6.52	6.55	6.59	6.64				
25	7.18	7.20	7.23	7.27	7.31	7.35	7.38	7.39	7.40	7.40	7.41	7.43	7.46	7.50	7.54				
30	8.10	8.11	8.13	8.17	8.22	8.26	8.30	8.32	8.32	8.33	8.34	8.36	8.39	8.42	8.46				
35	9.12	9.13	9.16	9.20	9.24	9.28	9.32	9.34	9.35	9.37	9.39	9.42	9.46	9.51	9.56				
40	10.3	10.3	10.3	10.4	10.4	10.4	10.5	10.5	10.5	10.5	10.5	10.5	10.6	10.6	10.7				
45	11.6	11.6	11.7	11.7	11.7	11.8	11.8	11.8	11.8	11.8	11.9	11.9	12.0	12.0	12.1				
50	12.9	12.9	12.9	12.9	12.9	13.0	13.0	13.0	13.1	13.1	13.2	13.2	13.3	13.4	13.4				
55	13.7	13.7	13.7	13.8	13.8	13.8	13.8	13.8	13.9	13.9	13.9	14.0	14.1	14.2	14.3				
60	14.1	14.1	14.0	14.0	14.0	14.0	14.0	14.0	14.0	14.1	14.2	14.2	14.4	14.5	14.7				
65	13.7	13.7	13.7	13.7	13.6	13.6	13.6	13.7	13.8	13.8	14.0	14.1	14.2	14.4	14.6				
70	13.0	13.0	12.9	12.9	12.8	12.8	12.8	12.8	12.8	12.9	13.0	13.0	13.1	13.2	13.4				
75	10.8	10.7	10.6	10.6	10.5	10.5	10.5	10.6	10.7	10.8	11.0	11.1	11.3	11.5	11.6				
80	9.54	9.50	9.48	9.48	9.49	9.49	9.50	9.48	9.46	9.45	9.46	9.50	9.58	9.68	9.81				
85	7.43	7.72	7.87	7.87	7.80	7.68	7.51	7.26	7.01	6.80	6.65	6.67	6.85	7.15	7.57				
90	8.04	9.21	9.74	9.60	9.21	8.64	7.98	7.53	7.06	6.58	6.09	5.60	5.12	4.64	4.15				
95	31.2	31.3	31.1	30.5	29.8	29.2	28.6	28.4	28.3	28.3	28.3	28.2	28.1	27.9	27.7				
100	117	119	119	118	117	115	114	113	113	112	112	112	111	111	110				
105	282	288	290	289	287	284	281	280	279	278	277	275	274	272	271				
110	505	515	518	516	512	507	502	501	500	499	498	496	493	489	485				
115	749	759	763	760	755	749	743	742	742	741	741	739	736	732	728				
120	983	993	996	993	988	982	976	975	973	972	971	969	966	963	959				
125	1216	1223	1225	1221	1216	1209	1203	1201	1200	1200	1199	1197	1194	1191	1188				
130	1415	1420	1421	1419	1415	1411	1407	1405	1404	1404	1403	1402	1400	1397	1395				
135	1587	1589	1589	1587	1584	1582	1579	1579	1578	1578	1579	1578	1577	1576	1575				
140	1737	1738	1737	1736	1733	1731	1729	1729	1728	1728	1728	1728	1727	1726	1725				
145	1876	1876	1876	1874	1871	1869	1867	1866	1865	1864	1864	1863	1863	1863	1862				
150	1984	1984	1983	1982	1980	1979	1977	1977	1976	1976	1976	1976	1975	1975	1974				
155	2073	2073	2073	2072	2070	2069	2068	2068	2067	2067	2067	2067	2067	2067	2067				
160	2146	2146	2146	2145	2145	2144	2143	2143	2142	2142	2142	2141	2141	2140	2139				
165	2203	2203	2203	2202	2202	2201	2200	2200	2199	2199	2199	2199	2199	2199	2198				
170	2241	2241	2241	2241	2241	2241	2240	2239	2239	2238	2238	2237	2237	2238	2238				
175	2266	2267	2267	2267	2266	2266	2266	2266	2266	2267	2267	2267	2267	2267	2267				
180	2281	2281	2281	2281	2281	2281	2281	2281	2281	2281	2281	2281	2281	2281	2281				

C Range: 0 - 360DEG
C Interval: 5.0DEG
Test Speed: MEDIUM
Temperature:25.3DEG
Operators:
Test Date:2024-11-15

γ Range: 0 - 180DEG
γ Interval: 0.5DEG
Test System:EVERFINE GO-2000_V1 SYSTEM V2.0.406.10
Humidity:65.0%
Test Distance:11.700m [K=0.8547]
Remarks: