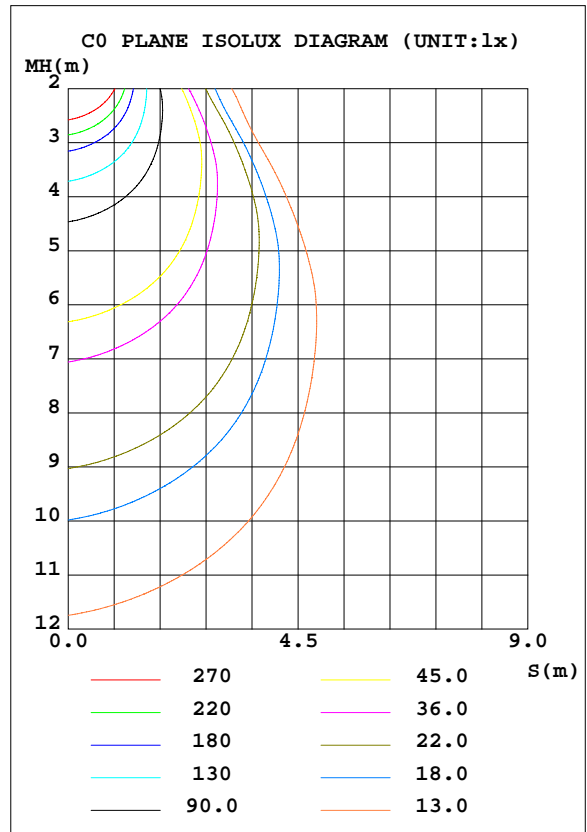
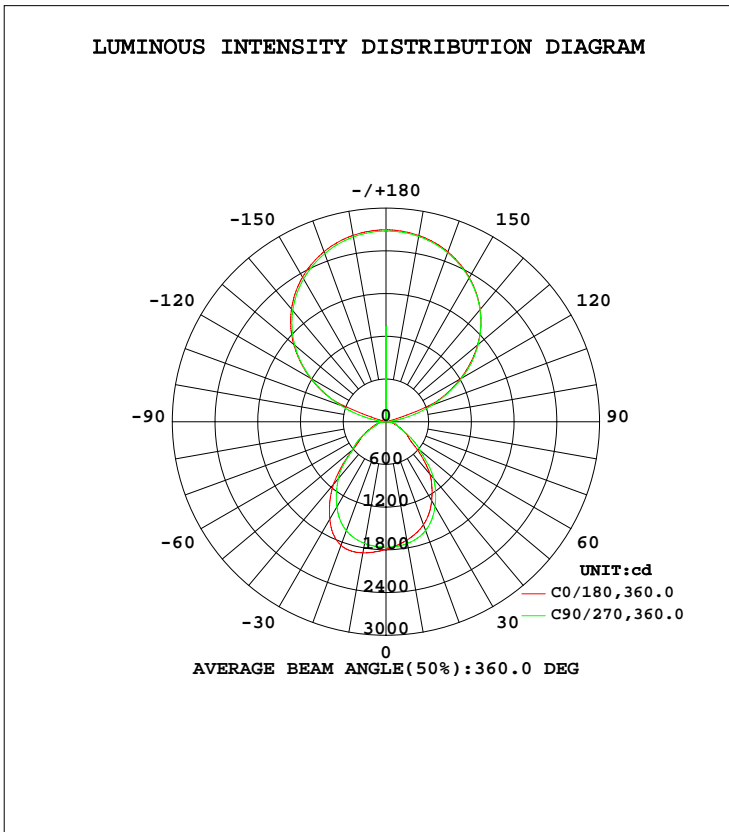


LUMINAIRE PHOTOMETRIC TEST REPORT

Test:U:229.69V I:0.3075A P:68.881W PF:0.9754 Freq:49.99Hz Lamp Flux:11142.4x1 lm		
NAME:	TYPE:	WEIGHT:
SPEC.:	DIM.: 1500*200*35	SERIAL No.:
MFR.: A381-5006C-02	SUR.:1.45*0.15	Shielding Angle:

DATA OF LAMP		PHOTOMETRIC DATA Eff: 161.76 lm/W			
MODEL		I _{max} (cd)	2697	S/MH(C0/180)	1.25
NOMINAL POWER(W)	70	LOR(%)	100.0	S/MH(C90/270)	1.17
RATED VOLTAGE(V)	230.0	TOTAL FLUX(lm)	11142	η UP, DN(C0-180)	33.8,16.3
NOMINAL FLUX(lm)	11142.4	CIE CLASS	SEMI-IND.	η UP, DN(C180-360)	33.7,16.3
LAMPS INSIDE	1	η up(%)	67.5	CIBSE SHR NOM	1.25
TEST VOLTAGE(V)	230.0	η down(%)	32.5	CIBSE SHR MAX	1.25



C Range: 0 - 360DEG
 C Interval: 5.0DEG
 Test Speed: MEDIUM
 Temperature:25.3DEG
 Operators:
 Test Date:2025-03-20

γ Range: 0 - 180DEG
 γ Interval: 0.5DEG
 Test System:EVERFINE GO-2000_V1 SYSTEM V2.0.406.10
 Humidity:65.0%
 Test Distance:11.700m [K=0.8547]
 Remarks:

ZONAL FLUX DIAGRAM

ZONAL FLUX DIAGRAM:

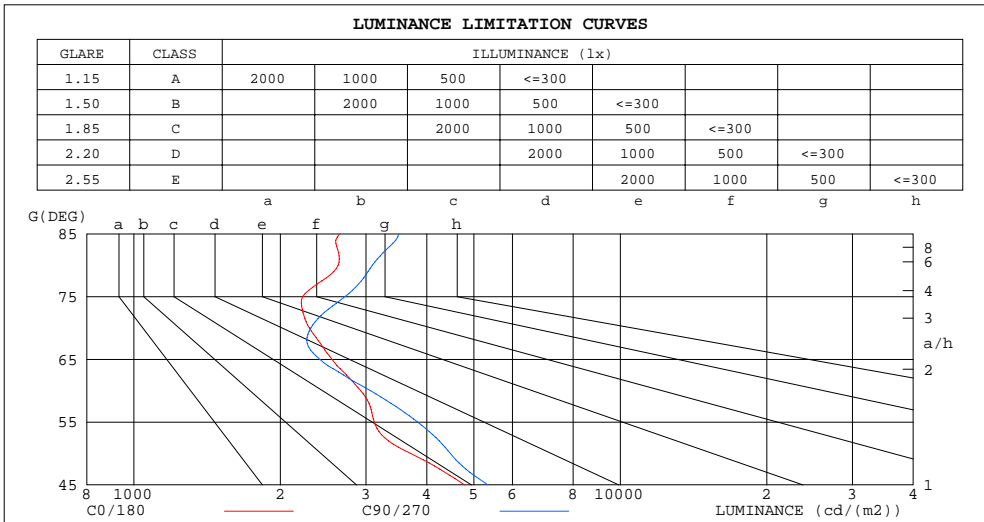
γ	C0	C45	C90	C135	C180	C225	C270	C315	γ	Φ zone	Φ total	Φ lum,lamp
10	1689	1692	1736	1794	1869	1817	1735	1671	0- 10	167.8	167.8	1.51,1.51
20	1540	1552	1626	1739	1848	1767	1629	1533	10- 20	483.0	650.8	5.84,5.84
30	1283	1302	1377	1485	1580	1514	1380	1284	20- 30	708.5	1359	12.2,12.2
40	960.1	976.1	1042	1096	1148	1125	1042	968.4	30- 40	764.9	2124	19.1,19.1
50	518.1	580.9	625.3	622.1	601.6	654.9	617.0	559.1	40- 50	623.8	2748	24.7,24.7
60	318.3	339.2	333.3	367.7	361.0	362.4	355.9	336.3	50- 60	410.8	3159	28.3,28.3
70	170.7	202.9	172.0	215.8	191.2	201.7	154.8	194.3	60- 70	253.7	3413	30.6,30.6
80	99.35	104.4	116.8	109.6	106.8	103.0	111.2	98.26	70- 80	154.1	3567	32,32
90	5.610	4.854	2.620	3.204	5.498	3.995	3.290	4.579	80- 90	59.12	3626	32.5,32.5
100	57.04	49.05	190.4	45.05	51.23	42.80	183.5	48.79	90-100	43.43	3669	32.9,32.9
110	584.9	634.9	693.3	678.8	501.0	638.4	679.8	674.4	100-110	326.1	3995	35.9,35.9
120	1207	1174	1228	1215	1222	1170	1210	1207	110-120	925.1	4920	44.2,44.2
130	1681	1656	1690	1687	1691	1648	1672	1670	120-130	1293	6213	55.8,55.8
140	2058	2038	2056	2057	2066	2030	2037	2041	130-140	1443	7656	68.7,68.7
150	2340	2326	2332	2340	2346	2318	2317	2325	140-150	1375	9031	81.1,81.1
160	2540	2523	2528	2537	2544	2518	2515	2526	150-160	1124	10155	91.1,91.1
170	2657	2637	2643	2651	2659	2636	2637	2645	160-170	733.0	10888	97.7,97.7
180	2696	2696	2696	2696	2696	2696	2696	2696	170-180	254.2	11142	100,100
DEG	LUMINOUS INTENSITY:cd									UNIT:lm		

C Range: 0 - 360DEG
 C Interval: 5.0DEG
 Test Speed: MEDIUM
 Temperature:25.3DEG
 Operators:
 Test Date:2025-03-20

γ Range: 0 - 180DEG
 γ Interval: 0.5DEG
 Test System:EVERFINE GO-2000_V1 SYSTEM V2.0.406.10
 Humidity:65.0%
 Test Distance:11.700m [K=0.8547]
 Remarks:

LUMINANCE LIMITATION CURVES

Test:U:229.69V I:0.3075A P:68.881W PF:0.9754 Freq:49.99Hz Lamp Flux:11142.4x1 lm		
NAME:	TYPE:	WEIGHT:
SPEC.:	DIM.: 1500*200*35	SERIAL No.:
MFR.: A381-5006C-02	SUR.:1.45*0.15	Shielding Angle:



LUMINANCE cd/(m2)		
G(DEG)	C0/180	C90/270
85	2647	3504
80	2630	3092
75	2222	2716
70	2294	2312
65	2555	2412
60	2927	3065
55	3119	3832
50	3706	4473
45	4784	5344

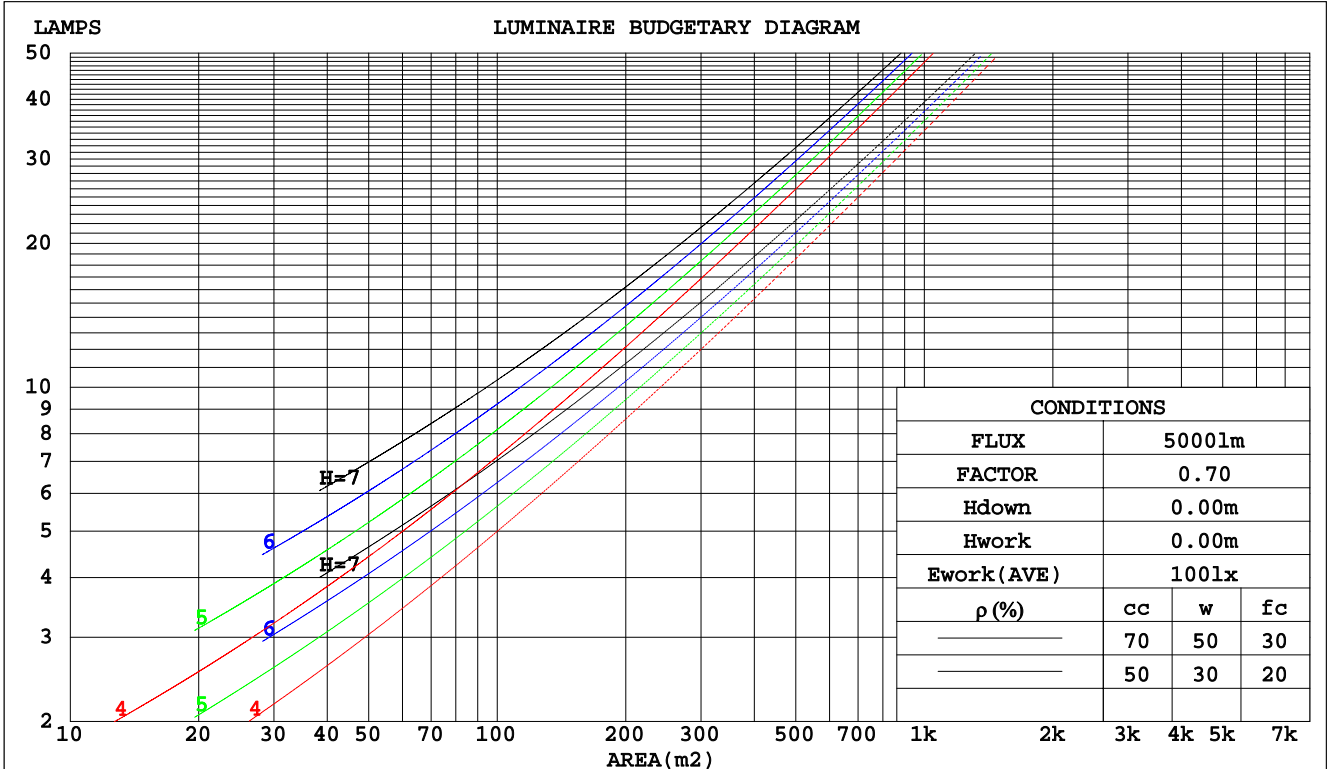
C Range: 0 - 360DEG
 C Interval: 5.0DEG
 Test Speed: MEDIUM
 Temperature:25.3DEG
 Operators:
 Test Date:2025-03-20

γ Range: 0 - 180DEG
 γ Interval: 0.5DEG
 Test System:EVERFINE GO-2000_V1 SYSTEM V2.0.406.10
 Humidity:65.0%
 Test Distance:11.700m [K=0.8547]
 Remarks:

CU AND LUMINAIRE BUDGETARY ESTIMATE DIAGRAM

Test:U:229.69V I:0.3075A P:68.881W PF:0.9754 Freq:49.99Hz Lamp Flux:11142.4x1 lm		
NAME:	TYPE:	WEIGHT:
SPEC.:	DIM.: 1500*200*35	SERIAL No.:
MFR.: A381-5006C-02	SUR.:1.45*0.15	Shielding Angle:

pcc	80%			70%			50%			30%			10%			0
	50%	30%	10%	50%	30%	10%	50%	30%	10%	50%	30%	10%	50%	30%	10%	0
pw																0
pfc	20%			20%			20%			20%			20%			0
RCR	RCR:Room Cavity Ratio						Coefficients of Utilization(CU)									
0.0	1.03	1.03	1.03	.93	.93	.93	.74	.74	.74	.56	.56	.56	.40	.40	.40	.33
1.0	.90	.87	.83	.81	.78	.76	.65	.63	.61	.50	.49	.47	.36	.35	.35	.28
2.0	.79	.74	.69	.72	.67	.63	.58	.54	.51	.44	.42	.40	.32	.31	.30	.24
3.0	.70	.63	.58	.64	.58	.53	.51	.47	.44	.40	.37	.35	.29	.27	.26	.21
4.0	.62	.55	.49	.57	.50	.45	.46	.41	.38	.36	.33	.30	.26	.24	.23	.19
5.0	.56	.48	.42	.51	.44	.39	.41	.36	.33	.32	.29	.26	.24	.22	.20	.17
6.0	.50	.42	.37	.46	.39	.34	.37	.32	.29	.29	.26	.23	.22	.20	.18	.15
7.0	.45	.38	.32	.41	.35	.30	.34	.29	.25	.27	.23	.21	.20	.18	.16	.13
8.0	.41	.34	.29	.38	.31	.27	.31	.26	.23	.24	.21	.19	.19	.16	.15	.12
9.0	.37	.30	.26	.34	.28	.24	.28	.24	.20	.23	.19	.17	.17	.15	.13	.11
10.0	.34	.27	.23	.31	.25	.21	.26	.21	.18	.21	.18	.15	.16	.14	.12	.10



C Range: 0 - 360DEG
 C Interval: 5.0DEG
 Test Speed: MEDIUM
 Temperature:25.3DEG
 Operators:
 Test Date:2025-03-20

γ Range: 0 - 180DEG
 γ Interval: 0.5DEG
 Test System:EVERFINE GO-2000_V1 SYSTEM V2.0.406.10
 Humidity:65.0%
 Test Distance:11.700m [K=0.8547]
 Remarks:

WEC AND CCEC

Test:U:229.69V I:0.3075A P:68.881W PF:0.9754 Freq:49.99Hz Lamp Flux:11142.4x1 lm		
NAME:	TYPE:	WEIGHT:
SPEC.:	DIM.: 1500*200*35	SERIAL No.:
MFR.: A381-5006C-02	SUR.:1.45*0.15	Shielding Angle:

ρcc	80%			70%			50%			30%			10%			0
ρw	50%	30%	10%	50%	30%	10%	50%	30%	10%	50%	30%	10%	50%	30%	10%	0
ρfc	20%			20%			20%			20%			20%			0
RCR	RCR:Room Cavity Ratio						Wall Exitance Coefficients(WEC)									
0.0																
1.0	.261	.148	.047	.234	.133	.042	.183	.105	.033	.136	.078	.025	.092	.054	.017	
2.0	.242	.133	.041	.217	.120	.037	.171	.095	.029	.128	.072	.022	.088	.050	.016	
3.0	.224	.119	.036	.202	.108	.033	.159	.086	.026	.119	.065	.020	.082	.046	.014	
4.0	.208	.108	.032	.187	.098	.029	.148	.079	.023	.111	.060	.018	.077	.042	.013	
5.0	.194	.099	.029	.175	.090	.026	.138	.072	.021	.104	.055	.016	.073	.039	.012	
6.0	.181	.091	.026	.163	.082	.024	.129	.066	.019	.098	.051	.015	.068	.036	.011	
7.0	.169	.084	.024	.153	.076	.022	.122	.061	.018	.092	.047	.014	.065	.034	.010	
8.0	.159	.078	.022	.144	.071	.020	.114	.057	.016	.087	.044	.013	.061	.031	.009	
9.0	.150	.072	.020	.135	.066	.019	.108	.053	.015	.082	.041	.012	.058	.029	.008	
10.0	.141	.068	.019	.128	.062	.017	.102	.050	.014	.078	.039	.011	.055	.028	.008	

ρcc	80%			70%			50%			30%			10%			0
ρw	50%	30%	10%	50%	30%	10%	50%	30%	10%	50%	30%	10%	50%	30%	10%	0
ρfc	20%			20%			20%			20%			20%			0
RCR	RCR:Room Cavity Ratio						Ceiling Cavity Exitance Coefficients(CCEC)									
0.0	.704	.704	.704	.602	.602	.602	.411	.411	.411	.236	.236	.236	.075	.075	.075	
1.0	.695	.675	.656	.595	.579	.565	.407	.398	.391	.234	.231	.227	.075	.074	.073	
2.0	.687	.654	.626	.589	.563	.541	.403	.389	.377	.233	.227	.221	.075	.073	.072	
3.0	.680	.638	.605	.583	.551	.525	.400	.383	.368	.231	.223	.217	.074	.073	.071	
4.0	.674	.627	.591	.578	.542	.514	.397	.377	.362	.230	.221	.214	.074	.072	.070	
5.0	.667	.618	.581	.573	.535	.506	.395	.373	.357	.229	.219	.212	.074	.072	.070	
6.0	.661	.611	.574	.569	.529	.500	.392	.370	.354	.228	.218	.210	.073	.071	.069	
7.0	.656	.605	.569	.564	.524	.496	.390	.367	.351	.226	.216	.209	.073	.071	.069	
8.0	.651	.600	.565	.560	.520	.492	.388	.365	.349	.225	.215	.208	.073	.071	.069	
9.0	.646	.595	.562	.556	.517	.490	.385	.363	.348	.224	.215	.207	.073	.070	.069	
10.0	.641	.592	.559	.552	.514	.488	.383	.362	.347	.224	.214	.207	.072	.070	.069	

C Range: 0 - 360DEG
 C Interval: 5.0DEG
 Test Speed: MEDIUM
 Temperature:25.3DEG
 Operators:
 Test Date:2025-03-20

γ Range: 0 - 180DEG
 γ Interval: 0.5DEG
 Test System:EVERFINE GO-2000_V1 SYSTEM V2.0.406.10
 Humidity:65.0%
 Test Distance:11.700m [K=0.8547]
 Remarks:

UGR(Unified Glare Rating) Table

Test:U:229.69V I:0.3075A P:68.881W PF:0.9754 Freq:49.99Hz Lamp Flux:11142.4x1 lm										
NAME:					TYPE:			WEIGHT:		
SPEC.:					DIM.: 1500*200*35			SERIAL No.:		
MFR.: A381-5006C-02					SUR.:1.45*0.15			Shielding Angle:		
ceiling/cavity	0.7	0.7	0.5	0.5	0.3	0.7	0.7	0.5	0.5	0.3
walls	0.5	0.3	0.5	0.3	0.3	0.5	0.3	0.5	0.3	0.3
working plane	0.2	0.2	0.2	0.2	0.2	0.2	0.2	0.2	0.2	0.2
Room dimensions	Viewed crosswise					Viewed endwise				
x = 2H y = 2H	11.3	12.0	12.3	13.0	14.4	11.4	12.2	12.4	13.2	14.6
3H	11.9	12.6	12.9	13.6	15.0	12.1	12.8	13.1	13.8	15.2
4H	12.2	12.9	13.3	13.9	15.3	12.5	13.1	13.5	14.2	15.6
6H	12.6	13.2	13.7	14.3	15.7	13.0	13.6	14.0	14.6	16.0
8H	12.8	13.3	13.9	14.4	15.8	13.2	13.8	14.3	14.8	16.3
12H	12.9	13.4	14.0	14.5	15.9	13.4	13.9	14.5	15.0	16.4
4H 2H	11.4	12.0	12.4	13.0	14.4	11.5	12.2	12.6	13.2	14.6
3H	12.2	12.8	13.3	13.8	15.3	12.4	13.0	13.5	14.0	15.5
4H	12.7	13.2	13.8	14.3	15.8	13.0	13.5	14.1	14.5	16.0
6H	13.3	13.7	14.4	14.8	16.3	13.6	14.0	14.7	15.1	16.6
8H	13.6	13.9	14.7	15.0	16.5	13.9	14.3	15.1	15.4	16.9
12H	13.7	14.1	14.9	15.2	16.7	14.2	14.5	15.3	15.7	17.2
8H 4H	12.9	13.2	14.0	14.3	15.8	13.1	13.5	14.2	14.6	16.1
6H	13.6	13.9	14.8	15.1	16.6	13.9	14.2	15.0	15.3	16.8
8H	14.0	14.3	15.1	15.4	16.9	14.3	14.6	15.4	15.7	17.2
12H	14.3	14.5	15.5	15.7	17.2	14.7	14.9	15.8	16.1	17.6
12H 4H	12.8	13.2	14.0	14.3	15.8	13.1	13.4	14.2	14.5	16.0
6H	13.7	13.9	14.8	15.1	16.6	13.9	14.2	15.1	15.3	16.9
8H	14.1	14.3	15.2	15.5	17.0	14.4	14.6	15.5	15.8	17.3
Variations with the observer position at spacings:										
S = 1.0H	+ 0.3 / - 0.4					+ 0.3 / - 0.3				
1.5H	+ 0.1 / - 0.4					+ 0.2 / - 0.2				
2.0H	+ 0.6 / - 0.5					+ 0.5 / - 0.4				

CIE Pub.117, 11142 lm Total Lamp Luminous Flux Corrected (8log(F/F0) = 8.4)

C Range: 0 - 360DEG
 C Interval: 5.0DEG
 Test Speed: MEDIUM
 Temperature:25.3DEG
 Operators:
 Test Date:2025-03-20

γ Range: 0 - 180DEG
 γ Interval: 0.5DEG
 Test System:EVERFINE GO-2000_V1 SYSTEM V2.0.406.10
 Humidity:65.0%
 Test Distance:11.700m [K=0.8547]
 Remarks:

UTILIZATION FACTORS TABLE

Test:U:229.69V I:0.3075A P:68.881W PF:0.9754 Freq:49.99Hz Lamp Flux:11142.4x1 lm		
NAME:	TYPE:	WEIGHT:
SPEC.:	DIM.: 1500*200*35	SERIAL No.:
MFR.: A381-5006C-02	SUR.:1.45*0.15	Shielding Angle:

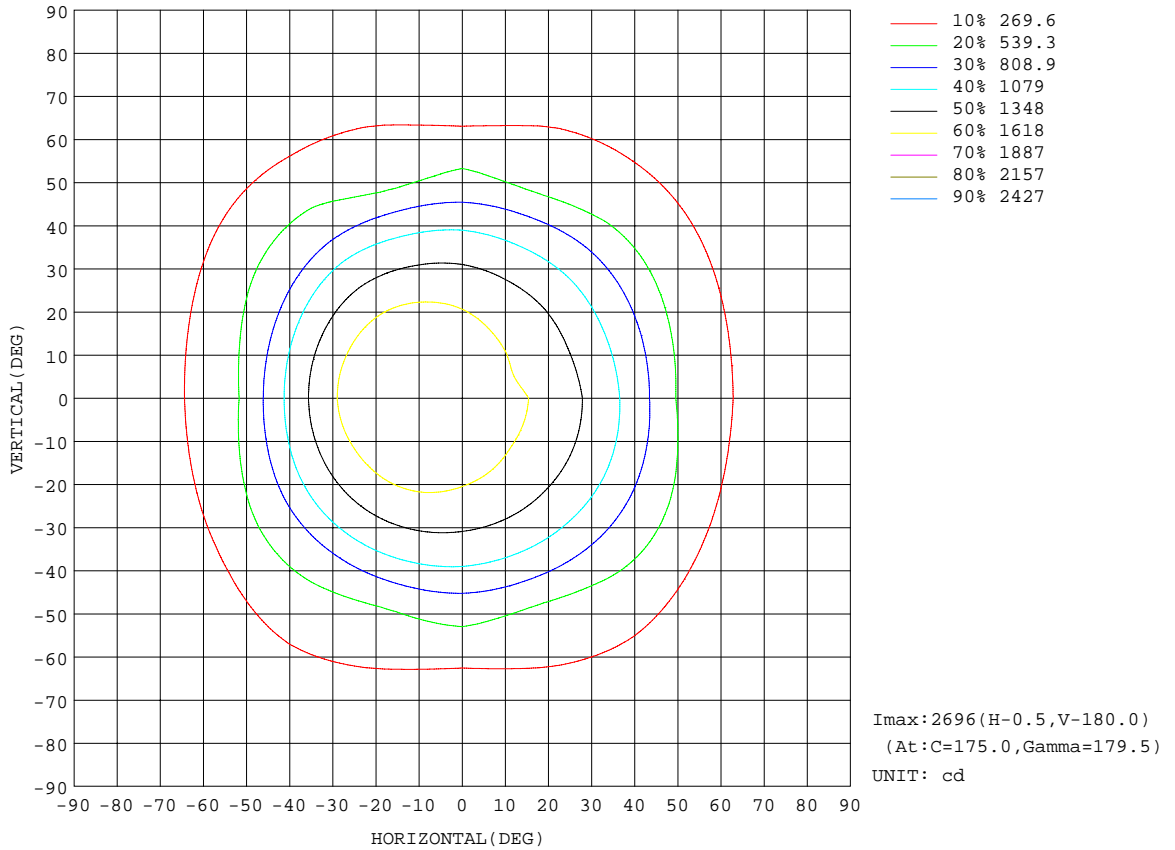
REFLECTANCE										
Ceiling	0.8	0.8	0.8	0.7	0.7	0.7	0.5	0.5	0.5	0
Walls	0.7	0.5	0.3	0.7	0.5	0.3	0.7	0.5	0.3	0
Working plane	0.2	0.2	0.2	0.2	0.2	0.2	0.2	0.2	0.2	0
ROOM INDEX	UTILIZATION FACTORS(PERCENT) $k(RI) \times RCR = 5$									
k = 0.60	42	32	26	39	30	25	33	26	22	14
0.80	51	40	34	47	38	32	39	32	28	17
1.00	58	47	41	53	44	38	44	38	33	20
1.25	65	55	48	59	50	44	49	43	38	22
1.50	70	60	53	64	55	49	52	46	42	23
2.00	77	68	61	70	62	56	57	51	47	25
2.50	81	73	67	74	67	61	59	55	51	26
3.00	85	77	71	76	70	65	62	57	54	27
4.00	89	83	78	80	75	71	64	61	58	28
5.00	91	86	82	82	78	74	66	63	61	29
ROOM INDEX	UF(total)									Direct
According to DIN EN 13032-2 2004			Suspended				SHRNOM = 1.25			

C Range: 0 - 360DEG
 C Interval: 5.0DEG
 Test Speed: MEDIUM
 Temperature:25.3DEG
 Operators:
 Test Date:2025-03-20

γ Range: 0 - 180DEG
 γ Interval: 0.5DEG
 Test System:EVERFINE GO-2000_V1 SYSTEM V2.0.406.10
 Humidity:65.0%
 Test Distance:11.700m [K=0.8547]
 Remarks:

ISOCANDELA DIAGRAM

Test:U:229.69V I:0.3075A P:68.881W PF:0.9754 Freq:49.99Hz Lamp Flux:11142.4x1 lm		
NAME:	TYPE:	WEIGHT:
SPEC.:	DIM.: 1500*200*35	SERIAL No.:
MFR.: A381-5006C-02	SUR.:1.45*0.15	Shielding Angle:

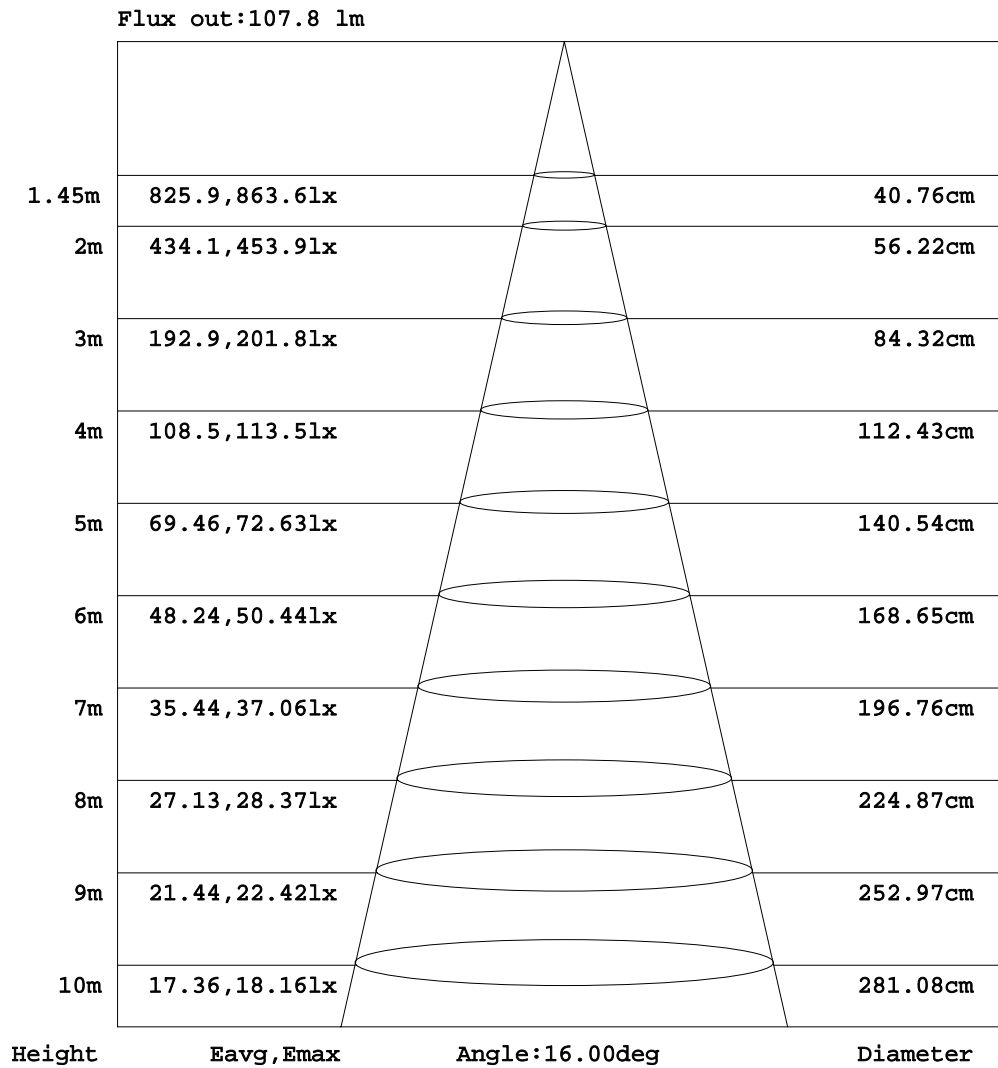


C Range: 0 - 360DEG
 C Interval: 5.0DEG
 Test Speed: MEDIUM
 Temperature: 25.3DEG
 Operators:
 Test Date: 2025-03-20

γ Range: 0 - 180DEG
 γ Interval: 0.5DEG
 Test System: EVERFINE GO-2000_V1 SYSTEM V2.0.406.10
 Humidity: 65.0%
 Test Distance: 11.700m [K=0.8547]
 Remarks:

AAI Figure

Test:U:229.69V I:0.3075A P:68.881W PF:0.9754 Freq:49.99Hz Lamp Flux:11142.4x1 lm		
NAME:	TYPE:	WEIGHT:
SPEC.:	DIM.: 1500*200*35	SERIAL No.:
MFR.: A381-5006C-02	SUR.:1.45*0.15	Shielding Angle:



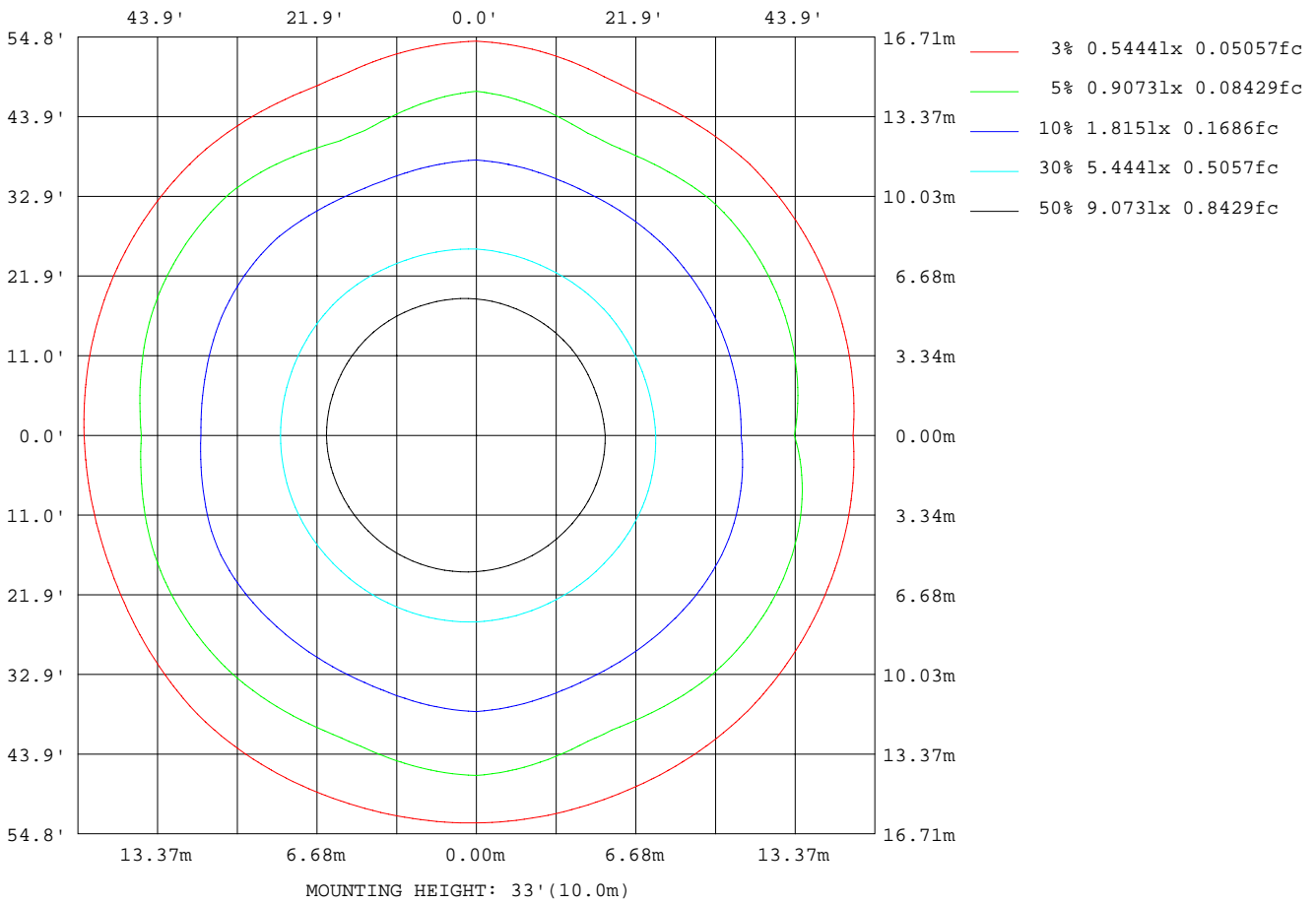
Note:The Curves indicate the illuminated area and the average illumination when the luminaire is at different distance.

C Range: 0 - 360DEG
 C Interval: 5.0DEG
 Test Speed: MEDIUM
 Temperature:25.3DEG
 Operators:
 Test Date:2025-03-20

γ Range: 0 - 180DEG
 γ Interval: 0.5DEG
 Test System:EVERFINE GO-2000_V1 SYSTEM V2.0.406.10
 Humidity:65.0%
 Test Distance:11.700m [K=0.8547]
 Remarks:

ISOLUX DIAGRAM

Test:U:229.69V I:0.3075A P:68.881W PF:0.9754 Freq:49.99Hz Lamp Flux:11142.4x1 lm		
NAME:	TYPE:	WEIGHT:
SPEC.:	DIM.: 1500*200*35	SERIAL No.:
MFR.: A381-5006C-02	SUR.:1.45*0.15	Shielding Angle:



C Range: 0 - 360DEG
 C Interval: 5.0DEG
 Test Speed: MEDIUM
 Temperature:25.3DEG
 Operators:
 Test Date:2025-03-20

γ Range: 0 - 180DEG
 γ Interval: 0.5DEG
 Test System:EVERFINE GO-2000_V1 SYSTEM V2.0.406.10
 Humidity:65.0%
 Test Distance:11.700m [K=0.8547]
 Remarks:

LED Avg.L Report

Test:U:229.69V I:0.3075A P:68.881W PF:0.9754 Freq:49.99Hz Lamp Flux:11142.4x1 lm		
NAME:	TYPE:	WEIGHT:
SPEC.:	DIM.: 1500*200*35	SERIAL No.:
MFR.: A381-5006C-02	SUR.:1.45*0.15	Shielding Angle:

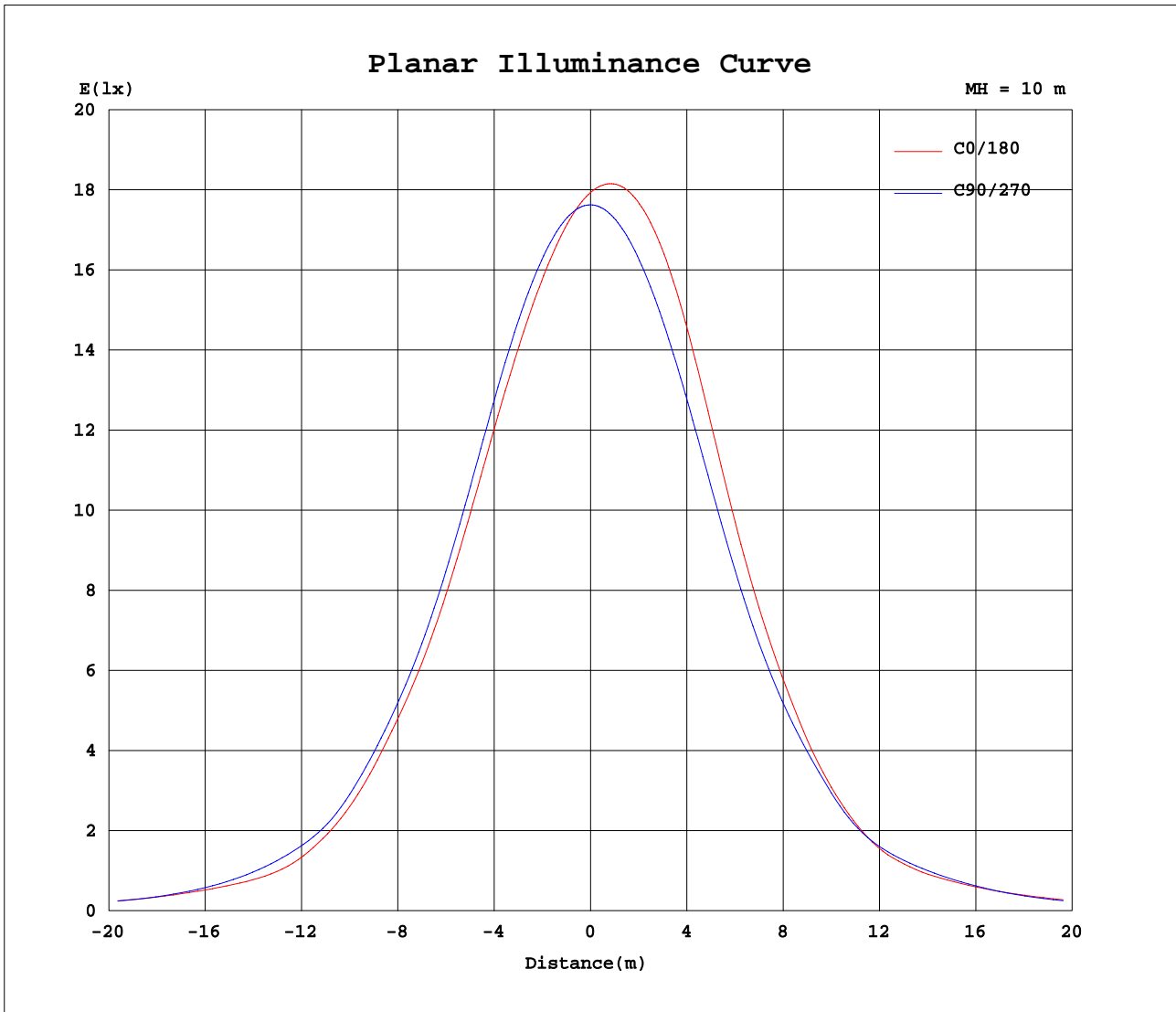
AvgL	cd/m2
L_0~180(65)av	2687
L_0~180(75)av	2355
L_0~180(85)av	2604
L_90~270(65)av	2436
L_90~270(75)av	2542
L_90~270(85)av	3212
L_45(65)av	2850
L_45(75)av	2677
L_45(85)av	2981

Standard: GB/T 29293-2012

C Range: 0 - 360DEG
 C Interval: 5.0DEG
 Test Speed: MEDIUM
 Temperature:25.3DEG
 Operators:
 Test Date:2025-03-20

γ Range: 0 - 180DEG
 γ Interval: 0.5DEG
 Test System:EVERFINE GO-2000_V1 SYSTEM V2.0.406.10
 Humidity:65.0%
 Test Distance:11.700m [K=0.8547]
 Remarks:

Planar Illuminance Curve



C Range: 0 - 360DEG
 C Interval: 5.0DEG
 Test Speed: MEDIUM
 Temperature: 25.3DEG
 Operators:
 Test Date: 2025-03-20

γ Range: 0 - 180DEG
 γ Interval: 0.5DEG
 Test System: EVERFINE GO-2000_V1 SYSTEM V2.0.406.10
 Humidity: 65.0%
 Test Distance: 11.700m [K=0.8547]
 Remarks:

LUMINOUS DISTRIBUTION INTENSITY DATA

Test:U:229.69V I:0.3075A P:68.881W PF:0.9754 Freq:49.99Hz Lamp Flux:11142.4x1 lm		
NAME:	TYPE:	WEIGHT:
SPEC.:	DIM.: 1500*200*35	SERIAL No.:
MFR.: A381-5006C-02	SUR.:1.45*0.15	Shielding Angle:

Table--1

UNIT: cd

C(DEG) γ (DEG)	0	5	10	15	20	25	30	35	40	45	50	55	60	65	70	75	80	85	90
0	1793	1791	1790	1788	1786	1784	1782	1780	1777	1776	1774	1772	1771	1770	1768	1767	1765	1764	1763
5	1744	1743	1742	1741	1740	1739	1739	1738	1738	1739	1740	1742	1743	1745	1747	1750	1752	1754	1757
10	1689	1688	1687	1686	1687	1687	1687	1688	1690	1692	1696	1700	1704	1709	1714	1719	1724	1730	1736
15	1624	1623	1622	1622	1622	1623	1624	1626	1628	1632	1637	1642	1649	1656	1663	1670	1678	1686	1695
20	1540	1539	1539	1540	1541	1542	1543	1545	1548	1552	1557	1564	1572	1580	1588	1597	1606	1616	1626
25	1426	1426	1427	1428	1429	1431	1432	1435	1438	1442	1448	1455	1463	1471	1480	1488	1498	1508	1519
30	1283	1285	1288	1290	1292	1294	1295	1297	1299	1302	1307	1314	1321	1329	1338	1347	1356	1366	1377
35	1126	1130	1134	1137	1140	1142	1142	1143	1144	1146	1150	1156	1162	1169	1178	1186	1195	1205	1214
40	960	967	973	977	981	981	980	979	977	976	978	981	986	992	1000	1011	1022	1032	1042
45	736	748	758	766	771	774	774	772	770	768	768	768	770	773	780	791	802	813	822
50	518	547	571	589	601	606	605	599	591	581	570	560	552	548	555	573	593	611	625
55	389	414	435	452	464	471	473	471	466	459	446	434	423	416	419	433	449	465	478
60	318	315	313	313	314	317	322	328	334	339	343	346	348	348	347	343	339	336	333
65	235	229	226	224	225	228	235	242	249	256	258	259	259	257	251	242	234	227	222
70	171	172	174	177	180	184	189	195	199	203	203	202	200	197	192	186	180	175	172
75	125	131	137	141	145	147	148	149	149	148	148	148	148	148	148	150	151	152	153
80	99.3	102	104	106	107	107	107	106	105	104	105	106	107	108	110	112	114	116	117
85	50.2	53.5	56.2	58.4	59.9	60.6	60.6	60.2	59.6	59.1	59.1	59.2	59.6	60.1	61.3	62.9	64.4	65.7	66.4
90	5.61	5.71	5.76	5.77	5.73	5.66	5.54	5.38	5.15	4.85	4.34	3.79	3.26	2.78	2.51	2.46	2.49	2.55	2.62
95	30.4	30.4	30.4	30.5	30.7	31.1	31.7	32.3	32.7	32.8	30.9	29.1	27.7	27.1	29.8	35.6	41.5	46.7	50.4
100	57.0	56.8	56.4	55.8	55.1	51.7	46.3	43.1	43.5	49.0	75.1	105	136	165	184	191	194	193	190
105	75.8	64.3	64.1	74.9	97.0	139	197	260	320	374	391	399	401	399	402	411	419	425	428
110	585	604	619	631	640	644	642	640	637	635	642	651	660	670	678	685	690	693	693
115	942	940	937	934	930	924	917	911	906	904	911	920	931	941	950	956	961	963	962
120	1207	1203	1199	1195	1192	1187	1182	1178	1175	1174	1180	1188	1197	1206	1214	1221	1226	1228	1228
125	1454	1449	1444	1441	1437	1434	1432	1430	1429	1430	1435	1441	1447	1454	1461	1467	1472	1475	1476
130	1681	1676	1672	1668	1665	1662	1659	1657	1656	1656	1660	1664	1670	1675	1680	1684	1688	1689	1690
135	1884	1878	1872	1868	1864	1862	1860	1859	1859	1859	1861	1864	1867	1870	1873	1877	1881	1884	1885
140	2058	2051	2046	2041	2038	2036	2035	2036	2036	2038	2039	2040	2041	2043	2045	2049	2052	2054	2056
145	2209	2203	2197	2193	2190	2189	2189	2190	2192	2193	2195	2196	2197	2199	2200	2201	2202	2203	2204
150	2340	2334	2328	2324	2321	2320	2321	2322	2324	2326	2326	2326	2327	2327	2328	2329	2330	2331	2332
155	2450	2444	2439	2435	2432	2430	2431	2432	2433	2434	2435	2435	2435	2435	2436	2437	2438	2438	2439
160	2540	2533	2528	2523	2520	2519	2519	2520	2521	2523	2523	2522	2522	2522	2523	2524	2525	2527	2528
165	2608	2602	2597	2592	2589	2588	2587	2588	2589	2590	2590	2590	2590	2590	2591	2592	2593	2594	2595
170	2657	2650	2645	2641	2638	2636	2635	2636	2636	2637	2638	2638	2638	2639	2640	2641	2642	2643	2643
175	2686	2679	2673	2669	2666	2664	2664	2665	2666	2667	2667	2667	2667	2668	2668	2669	2669	2670	2671
180	2696	2696	2696	2696	2696	2696	2696	2696	2696	2696	2696	2696	2696	2696	2696	2696	2696	2696	2696

C Range: 0 - 360DEG
 C Interval: 5.0DEG
 Test Speed: MEDIUM
 Temperature:25.3DEG
 Operators:
 Test Date:2025-03-20

γ Range: 0 - 180DEG
 γ Interval: 0.5DEG
 Test System:EVERFINE GO-2000_V1 SYSTEM V2.0.406.10
 Humidity:65.0%
 Test Distance:11.700m [K=0.8547]
 Remarks:

LUMINOUS DISTRIBUTION INTENSITY DATA

Test:U:229.69V I:0.3075A P:68.881W PF:0.9754 Freq:49.99Hz Lamp Flux:11142.4x1 lm		
NAME:	TYPE:	WEIGHT:
SPEC.:	DIM.: 1500*200*35	SERIAL No.:
MFR.: A381-5006C-02	SUR.:1.45*0.15	Shielding Angle:

Table--2

UNIT: cd

C(DEG) γ (DEG)	95	100	105	110	115	120	125	130	135	140	145	150	155	160	165	170	175	180	185
0	1761	1760	1759	1758	1757	1757	1756	1755	1755	1753	1751	1750	1751	1756	1765	1775	1785	1793	1794
5	1760	1762	1765	1768	1771	1774	1776	1779	1782	1782	1783	1785	1787	1795	1806	1817	1827	1836	1837
10	1742	1749	1756	1763	1769	1776	1782	1788	1794	1798	1803	1808	1813	1823	1836	1849	1860	1869	1869
15	1705	1715	1726	1736	1747	1757	1767	1777	1786	1794	1801	1809	1817	1829	1844	1858	1871	1880	1880
20	1638	1651	1664	1678	1691	1703	1715	1727	1739	1749	1759	1770	1780	1794	1810	1825	1838	1848	1847
25	1532	1545	1559	1574	1587	1601	1614	1626	1639	1650	1661	1672	1684	1697	1713	1727	1739	1747	1747
30	1388	1400	1412	1424	1436	1449	1461	1473	1485	1496	1508	1518	1529	1541	1553	1564	1574	1580	1579
35	1223	1232	1242	1251	1261	1271	1281	1291	1301	1311	1321	1331	1340	1349	1358	1366	1372	1376	1375
40	1048	1052	1056	1060	1065	1072	1079	1087	1096	1106	1116	1125	1134	1140	1144	1147	1148	1148	1148
45	821	819	816	813	814	817	822	829	836	846	857	867	876	880	880	879	876	873	872
50	617	604	590	578	575	583	594	608	622	637	650	661	668	664	648	631	615	602	610
55	472	463	452	443	442	450	460	471	482	489	495	498	500	494	484	473	464	458	468
60	337	342	348	355	360	364	366	368	368	362	355	349	343	342	345	350	355	361	364
65	228	237	247	257	265	270	274	276	275	269	261	253	246	244	246	250	254	259	262
70	177	184	192	200	206	211	214	216	216	212	207	202	196	193	191	191	191	191	192
75	153	153	152	152	152	153	154	155	156	157	157	157	156	154	150	146	143	140	140
80	116	114	112	110	109	109	109	109	110	111	113	114	115	115	113	111	109	107	106
85	65.0	63.1	61.0	59.0	58.1	58.3	58.8	59.4	60.1	60.8	61.2	61.4	61.1	59.4	56.6	53.6	50.8	48.5	48.9
90	2.50	2.39	2.29	2.23	2.29	2.47	2.70	2.95	3.20	3.36	3.52	3.68	3.87	4.19	4.62	5.01	5.32	5.50	5.13
95	46.4	40.8	34.5	28.3	25.1	25.2	26.1	27.5	29.0	28.7	28.2	27.6	26.9	26.6	26.6	26.6	26.7	26.7	26.4
100	193	193	190	183	164	134	102	71.6	45.1	39.2	38.6	41.7	46.9	50.1	50.7	51.1	51.2	51.2	50.9
105	419	408	396	384	382	388	391	387	372	310	240	168	101	61.4	50.5	49.6	55.8	65.9	58.5
110	683	672	660	650	648	656	664	673	679	676	669	658	643	616	581	547	519	501	527
115	952	941	930	921	919	925	933	942	951	953	955	956	956	956	957	958	959	959	959
120	1218	1206	1194	1184	1182	1188	1197	1206	1215	1218	1219	1219	1218	1219	1220	1221	1222	1222	1221
125	1466	1455	1445	1435	1434	1440	1448	1457	1466	1467	1466	1465	1464	1464	1465	1466	1467	1466	1464
130	1684	1677	1670	1664	1663	1668	1674	1680	1687	1688	1689	1689	1689	1690	1691	1692	1692	1691	1688
135	1881	1876	1872	1868	1867	1870	1874	1879	1883	1885	1886	1887	1888	1889	1890	1891	1892	1891	1888
140	2054	2051	2048	2045	2045	2048	2051	2054	2057	2059	2060	2060	2061	2062	2064	2065	2066	2066	2061
145	2203	2202	2201	2200	2200	2202	2205	2207	2209	2210	2211	2211	2211	2212	2214	2216	2216	2216	2212
150	2332	2332	2331	2331	2332	2334	2336	2338	2340	2341	2341	2341	2341	2342	2344	2345	2346	2346	2341
155	2439	2439	2440	2440	2441	2443	2445	2447	2449	2450	2450	2450	2450	2451	2453	2454	2455	2455	2450
160	2528	2528	2528	2529	2530	2531	2533	2535	2537	2537	2538	2538	2539	2540	2542	2543	2544	2544	2539
165	2596	2596	2597	2597	2598	2600	2601	2603	2604	2605	2605	2606	2606	2608	2609	2611	2612	2611	2607
170	2644	2645	2645	2646	2647	2648	2649	2650	2651	2652	2652	2653	2654	2655	2657	2659	2660	2659	2655
175	2672	2672	2673	2674	2675	2676	2677	2678	2679	2680	2681	2681	2682	2683	2685	2686	2687	2687	2682
180	2696	2696	2696	2696	2696	2696	2696	2696	2696	2696	2696	2696	2696	2696	2696	2696	2696	2696	2696

C Range: 0 - 360DEG
 C Interval: 5.0DEG
 Test Speed: MEDIUM
 Temperature:25.3DEG
 Operators:
 Test Date:2025-03-20

γ Range: 0 - 180DEG
 γ Interval: 0.5DEG
 Test System:EVERFINE GO-2000_V1 SYSTEM V2.0.406.10
 Humidity:65.0%
 Test Distance:11.700m [K=0.8547]
 Remarks:

LUMINOUS DISTRIBUTION INTENSITY DATA

Test:U:229.69V I:0.3075A P:68.881W PF:0.9754 Freq:49.99Hz Lamp Flux:11142.4x1 lm		
NAME:	TYPE:	WEIGHT:
SPEC.:	DIM.: 1500*200*35	SERIAL No.:
MFR.: A381-5006C-02	SUR.:1.45*0.15	Shielding Angle:

Table--3

UNIT: cd

C(DEG) γ (DEG)	190	195	200	205	210	215	220	225	230	235	240	245	250	255	260	265	270	275	280
0	1793	1790	1787	1784	1782	1780	1777	1776	1774	1772	1771	1770	1768	1767	1765	1764	1763	1761	1760
5	1835	1831	1826	1821	1817	1812	1807	1802	1797	1792	1787	1782	1777	1772	1766	1761	1756	1751	1746
10	1866	1861	1855	1848	1841	1833	1826	1817	1809	1800	1790	1781	1772	1762	1753	1744	1735	1726	1718
15	1876	1870	1861	1852	1843	1833	1822	1811	1798	1785	1772	1758	1745	1733	1720	1708	1696	1683	1672
20	1843	1835	1825	1815	1805	1793	1780	1767	1752	1736	1720	1703	1687	1672	1657	1643	1629	1614	1601
25	1742	1735	1725	1715	1705	1694	1682	1668	1652	1635	1618	1600	1584	1568	1553	1538	1524	1509	1494
30	1576	1570	1562	1554	1546	1536	1526	1514	1498	1482	1465	1448	1433	1419	1406	1393	1380	1366	1351
35	1372	1368	1362	1357	1351	1344	1335	1326	1311	1296	1281	1265	1253	1243	1233	1224	1214	1201	1188
40	1147	1145	1143	1141	1139	1136	1131	1125	1112	1099	1085	1071	1062	1056	1052	1047	1042	1030	1018
45	871	870	870	871	873	874	874	873	863	853	842	832	828	829	831	833	832	821	807
50	622	636	650	660	665	665	662	655	632	608	584	564	561	574	590	605	617	602	582
55	481	496	510	519	522	520	515	506	482	456	432	413	414	435	459	481	498	479	454
60	367	369	370	370	369	367	365	362	359	355	351	348	348	350	353	355	356	352	347
65	264	266	267	268	267	267	266	266	268	270	271	271	265	254	243	233	226	233	242
70	194	195	197	199	200	201	201	202	203	203	203	201	194	183	171	162	155	161	171
75	142	143	146	148	150	151	152	153	149	146	141	137	135	134	133	133	133	134	134
80	105	104	104	104	103	103	103	103	102	100	99.5	99.0	100	103	106	109	111	109	106
85	49.8	51.1	52.6	53.7	54.2	54.4	54.5	54.4	53.7	52.9	52.1	51.5	51.6	52.5	53.5	54.5	55.3	54.9	54.3
90	4.65	4.13	3.63	3.43	3.53	3.69	3.86	3.99	3.77	3.49	3.20	2.94	2.83	2.89	3.01	3.14	3.29	3.31	3.33
95	26.0	25.6	25.4	25.5	26.0	26.6	27.0	27.3	25.6	24.1	23.0	22.8	25.8	31.8	38.0	43.6	47.8	44.5	39.7
100	50.4	49.8	48.9	45.4	39.9	36.5	37.0	42.8	69.9	101	133	163	182	188	189	187	183	187	188
105	54.8	57.6	69.8	109	172	241	308	368	387	396	397	395	397	405	413	418	421	413	403
110	563	602	641	660	659	654	646	638	645	653	662	671	677	680	682	682	680	673	665
115	959	957	954	946	934	921	911	903	910	921	932	944	951	952	951	948	944	937	929
120	1219	1216	1212	1204	1194	1184	1175	1170	1177	1186	1197	1208	1215	1216	1216	1214	1210	1202	1193
125	1461	1457	1453	1446	1438	1430	1424	1420	1426	1434	1443	1452	1458	1460	1460	1458	1455	1448	1440
130	1684	1680	1675	1669	1662	1655	1651	1648	1652	1659	1666	1673	1677	1678	1677	1675	1672	1667	1662
135	1883	1878	1872	1867	1861	1857	1853	1851	1855	1859	1864	1869	1871	1871	1870	1869	1866	1864	1861
140	2056	2050	2044	2040	2036	2033	2031	2030	2032	2035	2039	2042	2043	2042	2041	2039	2037	2036	2035
145	2207	2201	2196	2192	2189	2187	2186	2185	2187	2189	2191	2193	2193	2192	2190	2189	2187	2187	2188
150	2336	2331	2326	2322	2320	2319	2318	2318	2318	2319	2320	2321	2321	2320	2319	2318	2317	2317	2318
155	2445	2440	2435	2431	2430	2429	2428	2428	2428	2428	2428	2428	2429	2428	2427	2426	2426	2425	2427
160	2534	2529	2524	2520	2519	2518	2518	2518	2517	2517	2517	2516	2516	2515	2515	2515	2515	2516	2517
165	2602	2597	2592	2588	2587	2587	2587	2587	2587	2587	2587	2587	2586	2586	2586	2586	2586	2587	2588
170	2650	2644	2639	2636	2635	2635	2636	2636	2636	2636	2636	2636	2636	2636	2636	2637	2637	2638	2639
175	2677	2672	2667	2664	2663	2664	2664	2665	2665	2665	2665	2666	2666	2666	2667	2667	2668	2668	2669
180	2696	2696	2696	2696	2696	2696	2696	2696	2696	2696	2696	2696	2696	2696	2696	2696	2696	2696	2696

C Range: 0 - 360DEG
 C Interval: 5.0DEG
 Test Speed: MEDIUM
 Temperature:25.3DEG
 Operators:
 Test Date:2025-03-20

γ Range: 0 - 180DEG
 γ Interval: 0.5DEG
 Test System:EVERFINE GO-2000_V1 SYSTEM V2.0.406.10
 Humidity:65.0%
 Test Distance:11.700m [K=0.8547]
 Remarks:

LUMINOUS DISTRIBUTION INTENSITY DATA

Test:U:229.69V I:0.3075A P:68.881W PF:0.9754 Freq:49.99Hz Lamp Flux:11142.4x1 lm		
NAME:	TYPE:	WEIGHT:
SPEC.:	DIM.: 1500*200*35	SERIAL No.:
MFR.: A381-5006C-02	SUR.:1.45*0.15	Shielding Angle:

Table--4

UNIT: cd

C(DEG) γ (DEG)	285	290	295	300	305	310	315	320	325	330	335	340	345	350	355				
0	1759	1758	1757	1757	1756	1755	1755	1753	1751	1750	1751	1754	1760	1769	1780				
5	1741	1737	1732	1728	1725	1721	1718	1714	1710	1707	1706	1708	1713	1721	1732				
10	1709	1701	1694	1688	1682	1676	1671	1665	1660	1656	1654	1655	1659	1666	1676				
15	1660	1650	1640	1632	1625	1618	1612	1605	1599	1594	1592	1592	1596	1603	1612				
20	1588	1575	1565	1556	1547	1540	1533	1525	1519	1513	1510	1510	1514	1520	1529				
25	1481	1468	1456	1447	1438	1431	1424	1416	1408	1403	1399	1399	1402	1407	1415				
30	1337	1324	1314	1305	1297	1290	1284	1277	1270	1265	1261	1260	1262	1267	1274				
35	1175	1163	1153	1145	1139	1134	1129	1122	1116	1111	1108	1107	1109	1112	1118				
40	1005	993	984	979	975	972	968	963	958	953	950	948	949	951	955				
45	793	779	770	766	764	763	762	758	755	751	748	745	742	740	738				
50	562	542	533	537	543	551	559	561	561	560	557	553	547	539	529				
55	427	402	393	402	415	429	444	447	448	446	441	435	427	416	404				
60	341	336	334	334	334	335	336	335	333	331	329	327	325	323	321				
65	252	262	266	265	262	257	251	246	242	237	234	231	230	231	232				
70	182	193	199	200	200	198	194	190	185	180	175	172	170	170	170				
75	135	136	138	141	143	145	146	144	141	137	134	131	129	128	126				
80	103	99.2	97.3	96.9	97.1	97.6	98.3	98.7	99.1	99.5	99.8	100.0	100	99.9	99.7				
85	53.5	52.7	52.3	52.1	52.1	52.2	52.5	52.9	53.4	53.8	54.0	53.9	53.4	52.6	51.5				
90	3.37	3.43	3.56	3.77	4.01	4.28	4.58	4.95	5.32	5.65	5.93	6.09	6.11	6.03	5.87				
95	34.2	28.8	26.2	26.6	27.8	29.4	31.0	31.1	31.0	30.8	30.5	30.3	30.3	30.3	30.3				
100	186	180	163	134	104	74.3	48.8	43.5	43.4	46.7	52.1	55.5	56.2	56.7	57.0				
105	392	382	384	395	403	404	394	338	273	204	140	94.1	71.0	60.3	61.8				
110	657	651	650	655	662	668	674	676	676	673	667	658	645	628	608				
115	922	916	916	921	928	936	944	947	950	951	952	951	950	948	946				
120	1185	1178	1178	1183	1191	1199	1207	1211	1213	1215	1216	1216	1215	1213	1211				
125	1432	1426	1426	1431	1437	1445	1452	1456	1459	1461	1462	1462	1461	1460	1457				
130	1657	1653	1652	1655	1660	1665	1670	1675	1680	1684	1687	1688	1688	1687	1684				
135	1859	1857	1857	1858	1860	1863	1866	1871	1876	1880	1884	1887	1888	1888	1886				
140	2035	2034	2034	2035	2037	2039	2041	2045	2049	2053	2056	2059	2060	2060	2060				
145	2188	2189	2190	2190	2191	2192	2194	2197	2200	2203	2206	2208	2209	2210	2210				
150	2320	2321	2322	2322	2323	2324	2325	2327	2330	2333	2336	2338	2339	2340	2340				
155	2429	2430	2431	2432	2433	2435	2436	2438	2441	2443	2445	2447	2448	2449	2450				
160	2518	2520	2521	2522	2523	2524	2526	2528	2530	2532	2534	2536	2538	2539	2539				
165	2589	2590	2591	2592	2593	2594	2595	2597	2599	2601	2603	2605	2606	2607	2608				
170	2640	2641	2642	2643	2643	2644	2645	2646	2648	2649	2651	2652	2654	2655	2656				
175	2670	2671	2672	2673	2674	2675	2676	2677	2678	2680	2681	2682	2683	2684	2685				
180	2696	2696	2696	2696	2696	2696	2696	2696	2696	2696	2696	2696	2696	2696	2696				

C Range: 0 - 360DEG
 C Interval: 5.0DEG
 Test Speed: MEDIUM
 Temperature:25.3DEG
 Operators:
 Test Date:2025-03-20

γ Range: 0 - 180DEG
 γ Interval: 0.5DEG
 Test System:EVERFINE GO-2000_V1 SYSTEM V2.0.406.10
 Humidity:65.0%
 Test Distance:11.700m [K=0.8547]
 Remarks: